

## Overview

**78,650**  
Confirmed  
cases

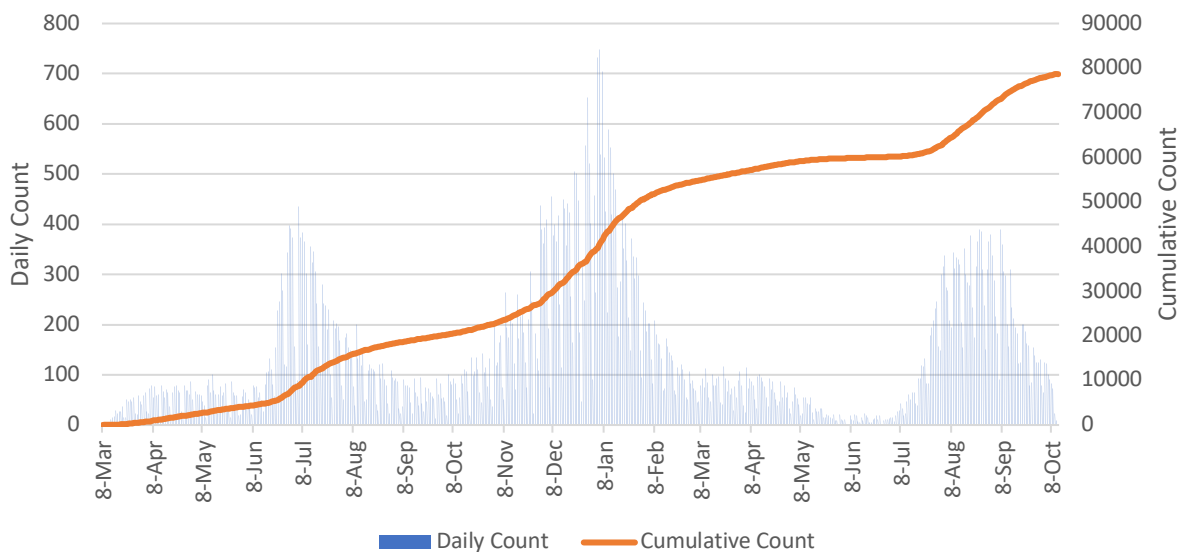
**6.3%** percent  
of Georgia cases  
are in Dekalb

**94** cases per  
100K people in  
the last 7 days

**6,133**  
hospitalizations

**1,149**  
deaths

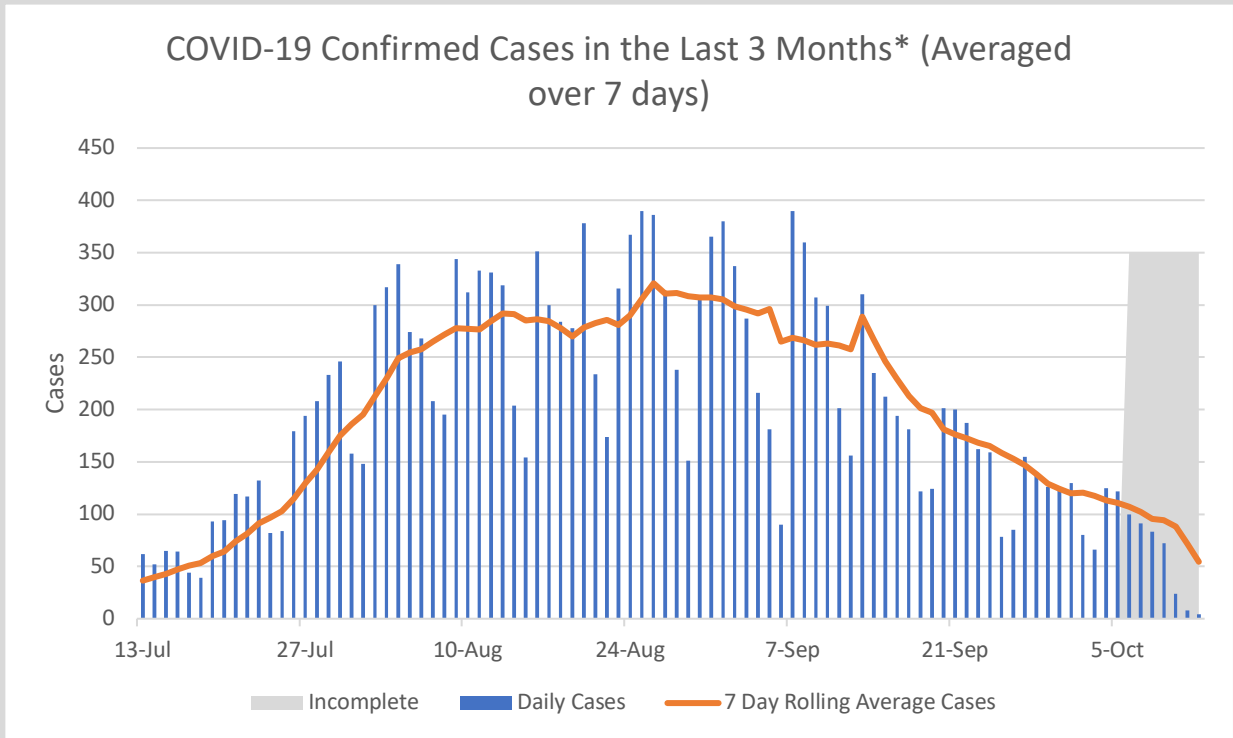
Daily and Cumulative COVID-19 Case Counts,  
DeKalb County\*



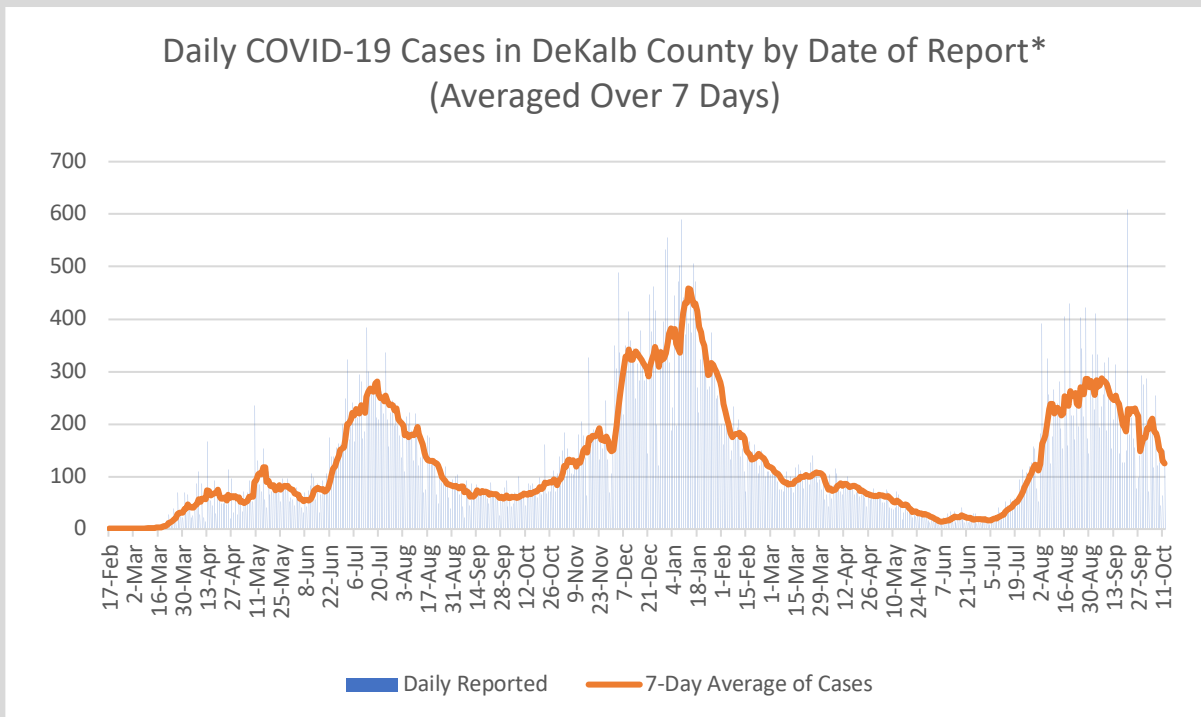
\*Counts shown reflect the number of confirmed cases as of 10/12/21 using the date of first positive sample collection. Where date of first positive sample collection were not available, the date of report creation in GA SENDSS was used instead. \*\*Note: All data reported are preliminary and subject to change. Delays in data reporting may cause changes in data counts, particularly within the last week.

- As of October 12, DeKalb County has reported 78,650 confirmed cases of 2019 novel coronavirus disease (COVID-19) and 1,149 confirmed COVID-19 deaths, an increase of 1004 cases (+1.3%) and 16 deaths (+1.4%) since the last report on October 6.
- During the week of 9/30 to 10/6, there were 94 COVID-19 cases per 100,000 people in Dekalb, which is defined as “substantial” community transmission by the CDC
- 1,654 COVID-19 cases (208 cases per 100,000 population) were diagnosed in the most recent 14-day period (9/23-10/6), a **43.5% DECREASE** from the previous 14-day period (9/9-9/22)
- Of all persons diagnosed with COVID-19 in DeKalb, 7.8% needed hospitalization and 1.5% died
- As of October 12, Georgia Department of Public Health reported that DeKalb accounted for 6.3% of the total number of COVID-19 cases in Georgia to date
- As of October 12, Georgia Department of Public Health reported that DeKalb has administered 835,282 vaccines, and has 434,677 residents with at least one dose (58%) and 387,944 fully vaccinated residents (51%)

# Other Case Count Metrics



\*Counts shown reflect the number of confirmed cases as of 10/12/21 using date of collection. All data reported are preliminary and subject to change. Positive cases from the last 7 days (gray area) are still being collected, and likely to increase.

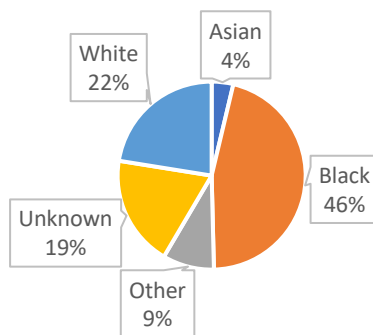


\*Counts shown reflect the number of confirmed cases as of 10/12/21 using date of report creating in GA SendSS. All data reported are preliminary and subject to change.

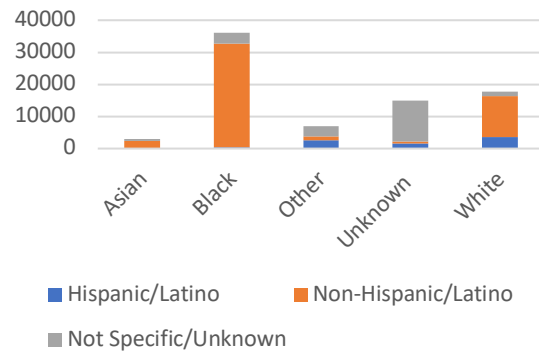
# Demographic Distribution of COVID Cases\*

Demographics		
Gender	N	%
Female	42840	54.5%
Male	35125	44.7%
Unknown	685	0.9%
Age		
9 and Under	4699	6.0%
10 to 19	8551	10.9%
20 to 29	15593	19.8%
30 to 39	15462	19.7%
40 to 49	12050	15.3%
50 to 59	10298	13.1%
60 to 69	6561	8.3%
70 and Over	5147	6.5%
Unknown	289	0.4%
Race		
Asian	2927	3.7%
Black	36093	45.9%
Other	6972	8.9%
Unknown	14986	19.1%
White	17672	22.5%
Ethnicity		
Hispanic/Latino	8155	10.4%
Non-Hispanic/Latino	49159	62.5%
Not Specific/Unknown	21336	27.1%

COVID-19 Cases by Race, DeKalb County

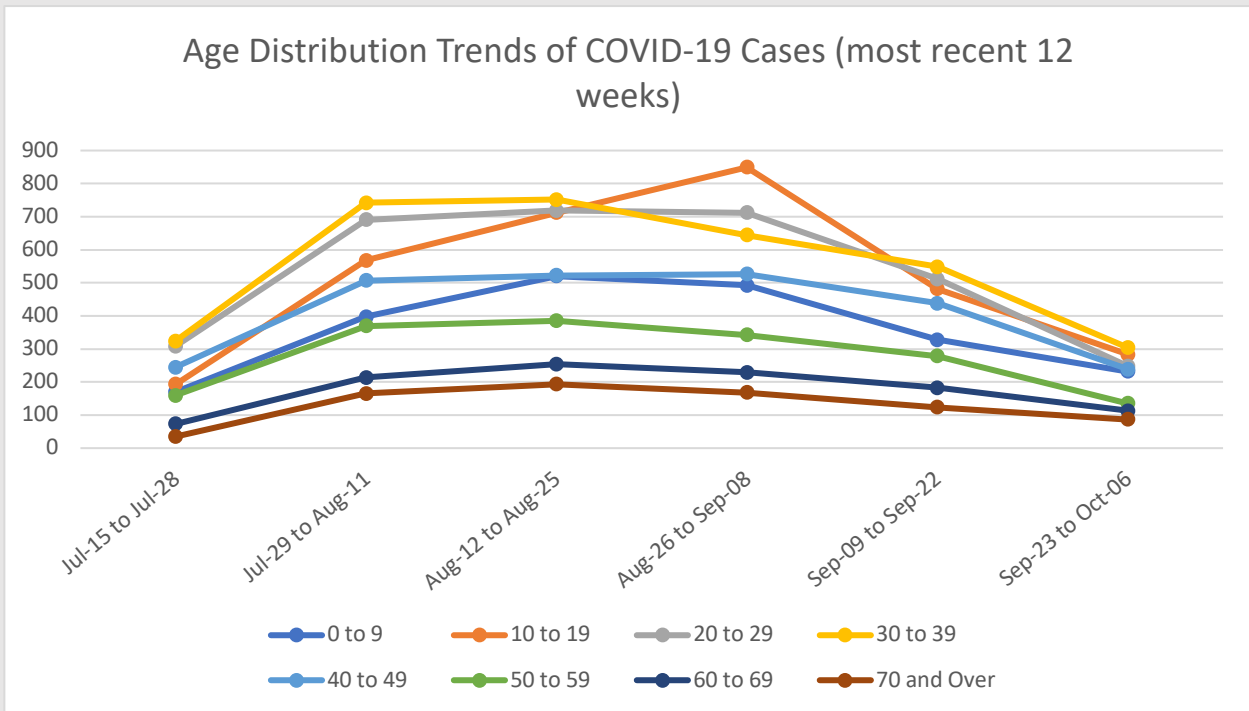
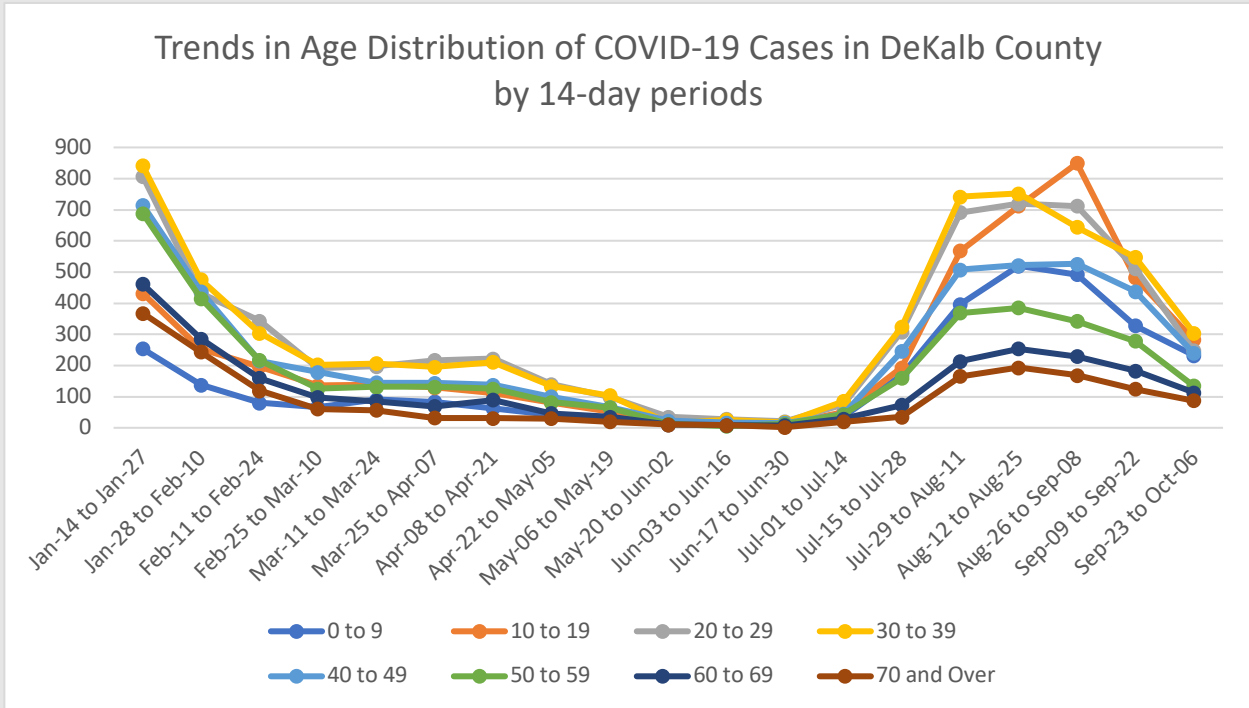


COVID-19 Cases by Race and Ethnicity, DeKalb County



\*"Other" includes Native Hawaiian/Pacific Islander and American Indian/Native American

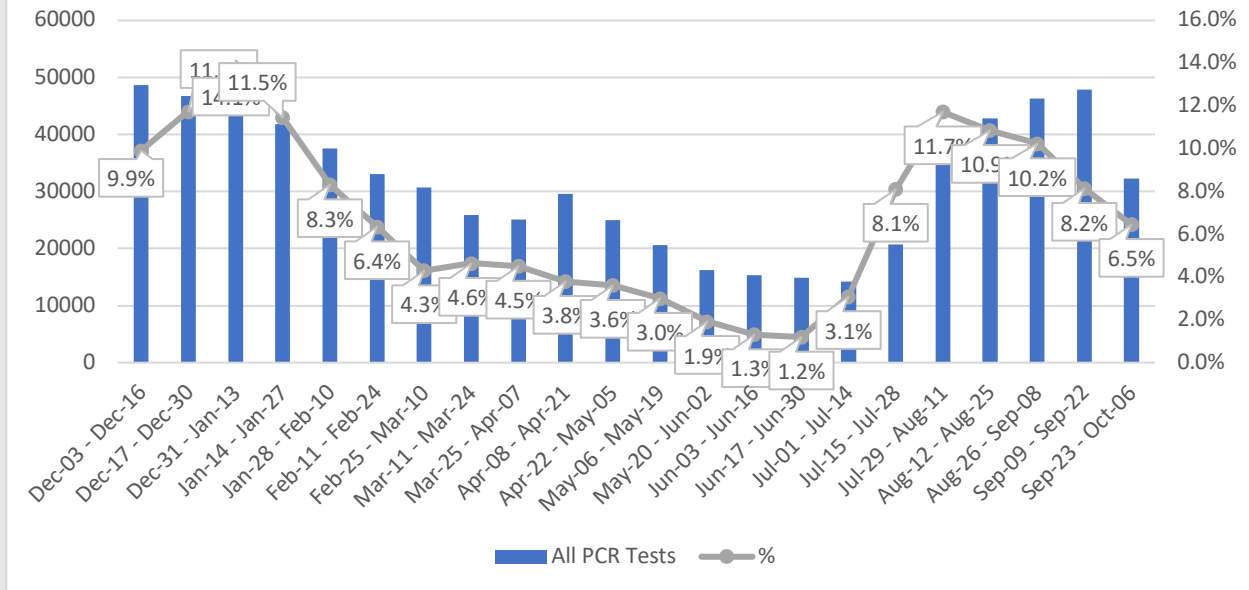
# Age Distribution of COVID Cases\*



\*Counts shown reflect the number of confirmed cases as of 10/12/21 using the date of first positive sample collection. Where date of first positive sample collection were not available, the date of report creation in GA SENDSS was used instead. All data reported are preliminary and subject to change.

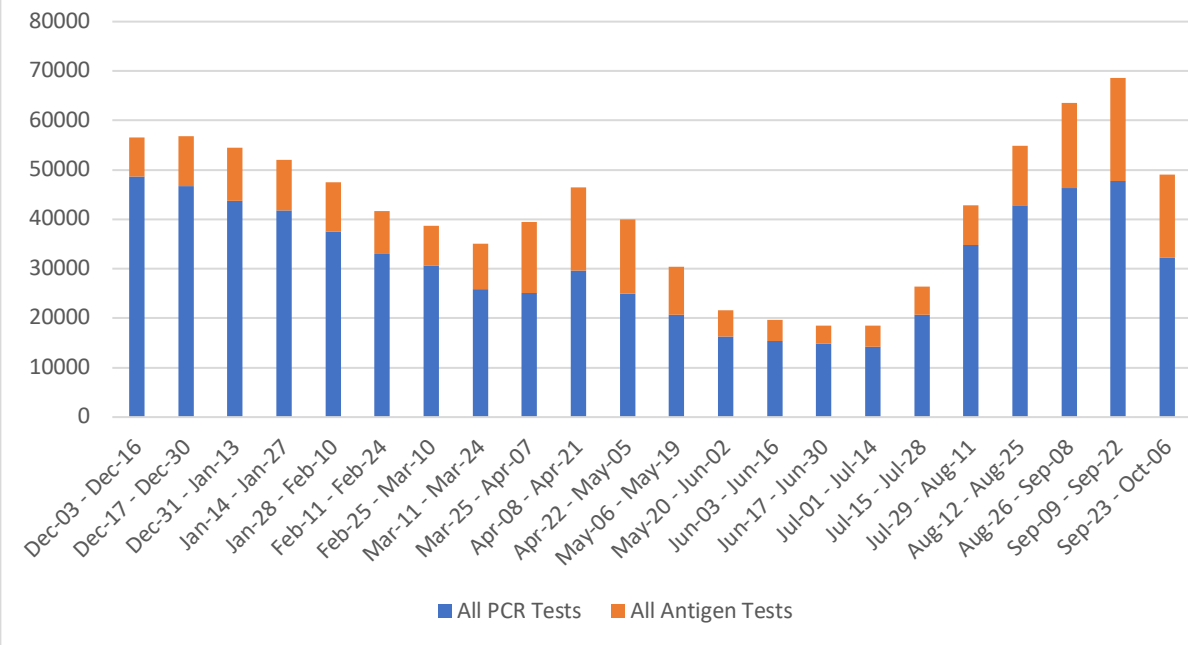
# COVID-19 Testing and Positivity\*

## Trends in positive COVID-19 PCR Tests in DeKalb County by 14-day Periods



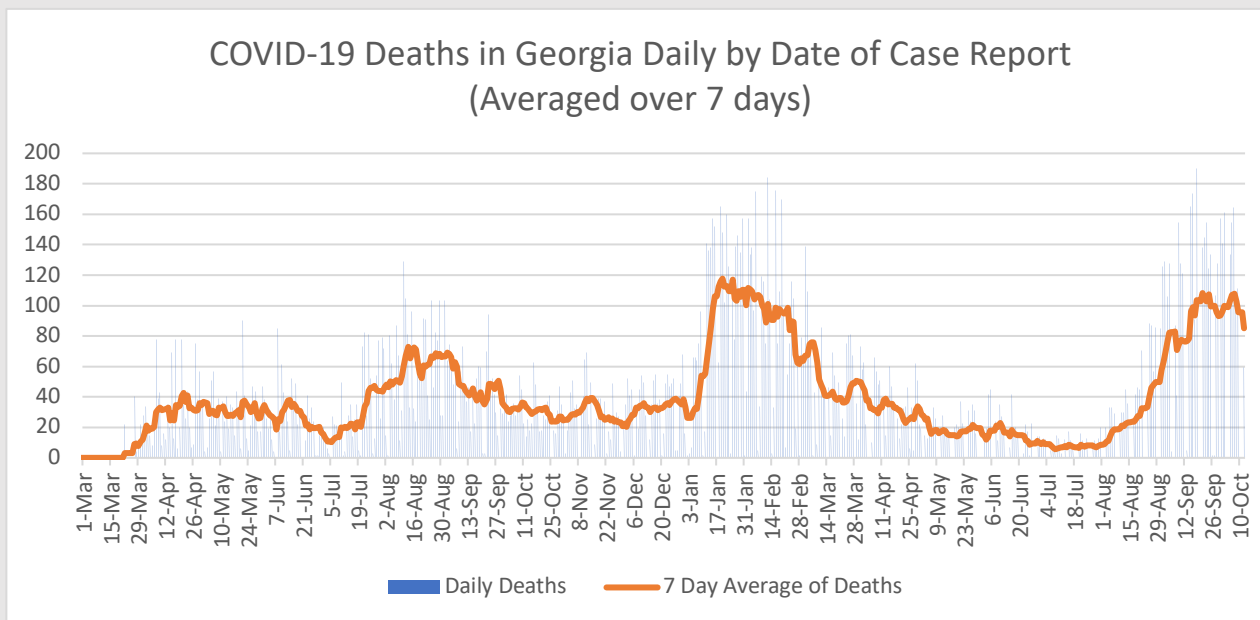
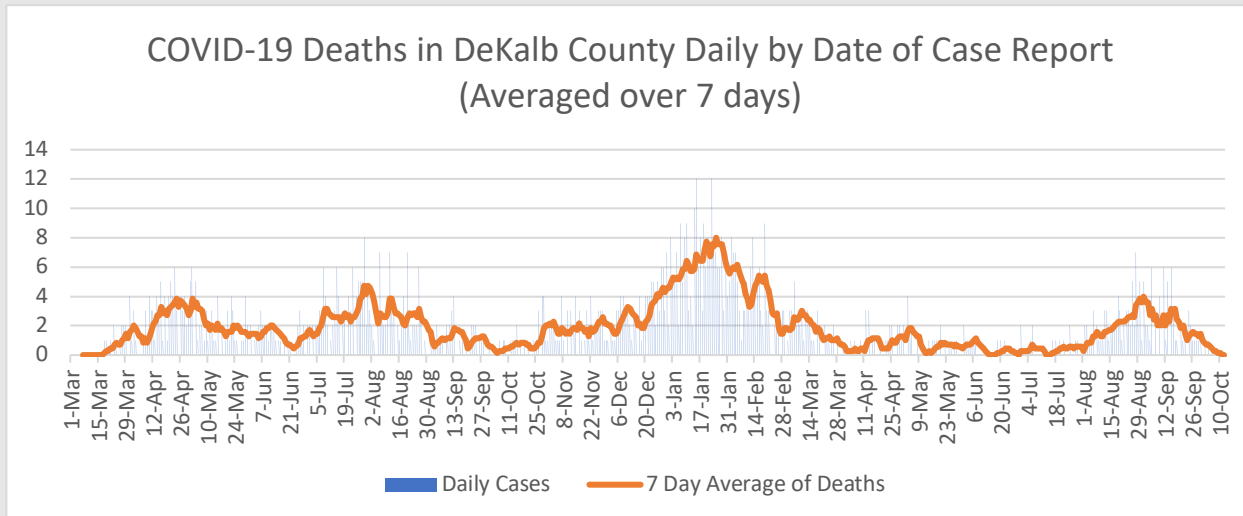
\*Data as of 10/12/2021. Only data on Polymerase Chain Reaction (PCR) tests were included. All data reported are preliminary and subject to change

## Total Testing in DeKalb County by 14-day Periods



\*Data as of 10/12/2021. Negative antigen tests from pop-up sites are not always reported and at-home kits do not report any results, leading to an underreporting of antigen test counts. All data reported are preliminary and subject to change.

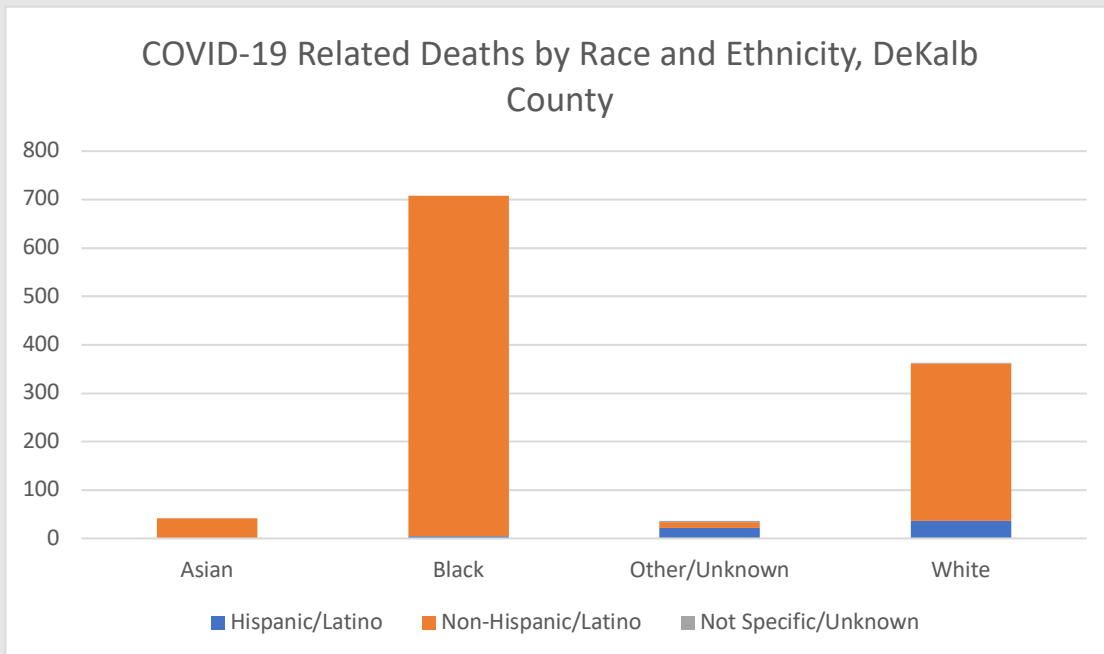
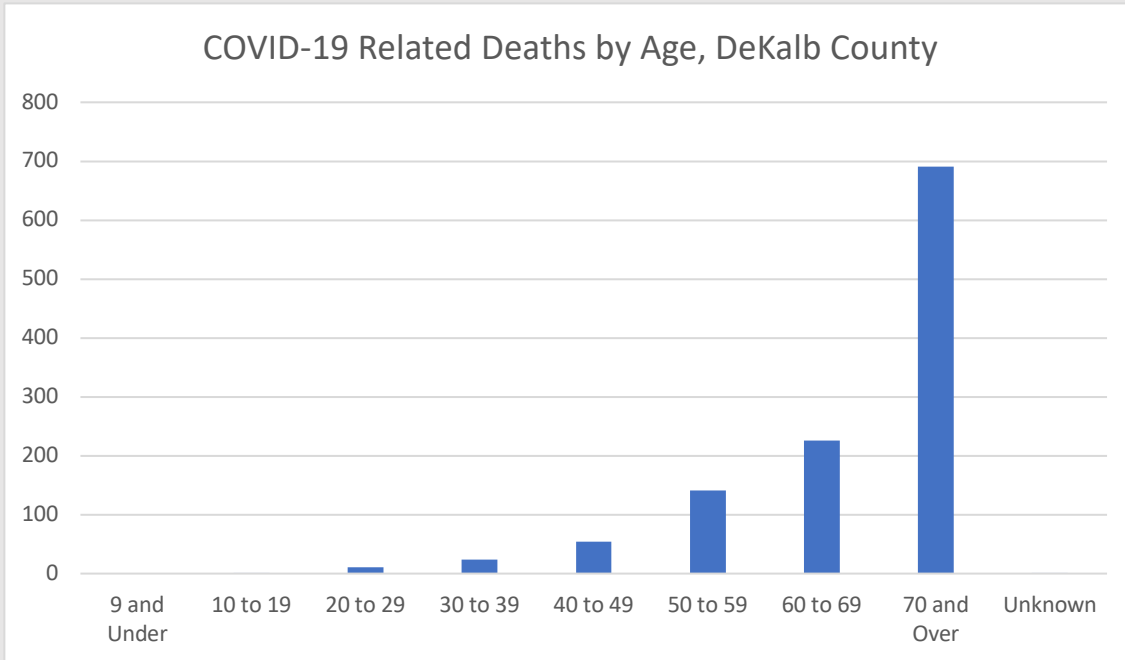
# COVID-19 Related Deaths\*



\*DeKalb County Data as of 10/12/2021. Georgia data as 10/12/2021. Date of case reported used. All data reported are preliminary and subject to change.

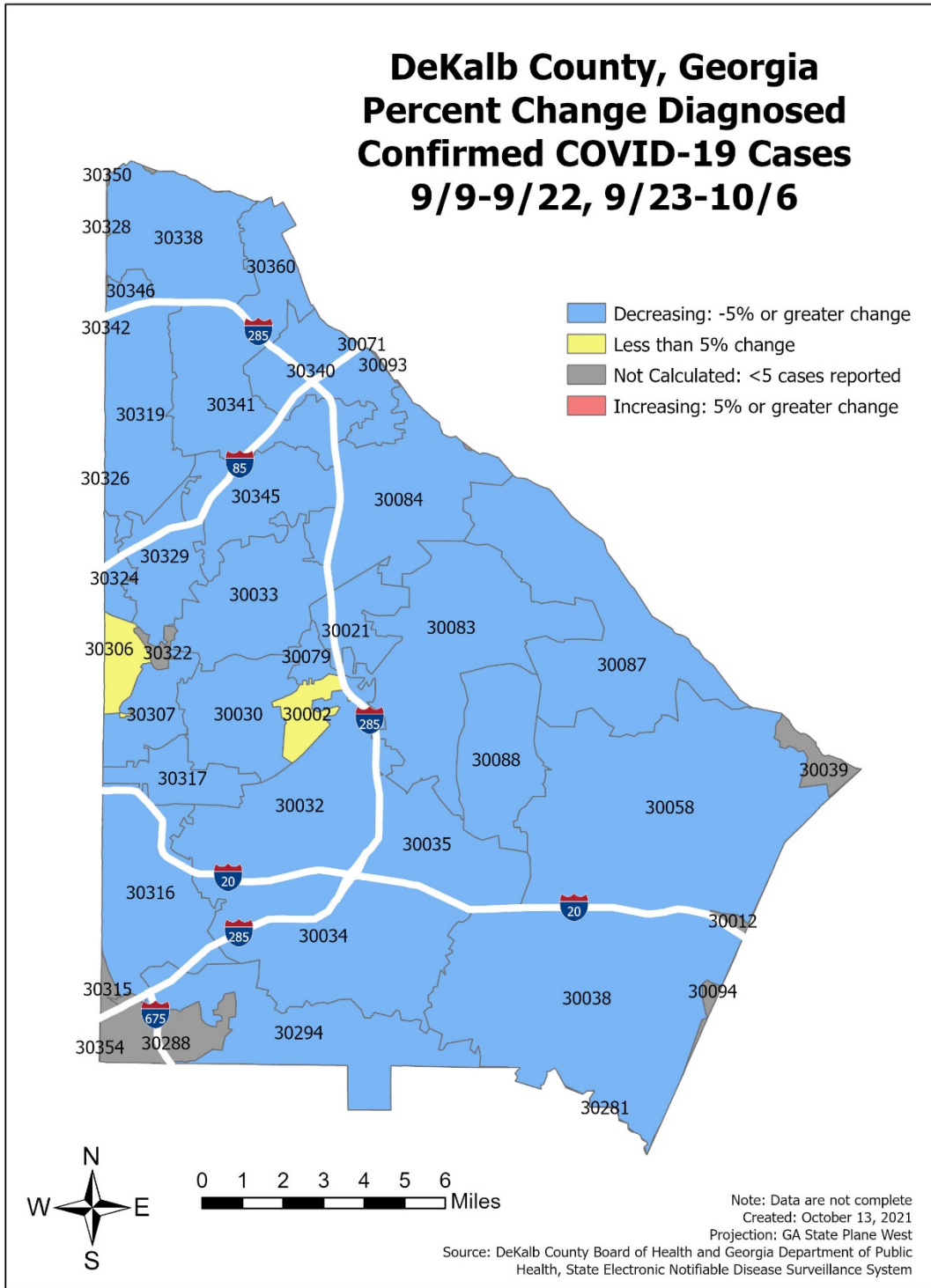
Total COVID-19 Related Hospitalizations/Deaths in DeKalb County, GA	Count	%
<b>Hospitalization</b>		
<b>Needed Hospitalization</b>	6133	7.8%
<b>Not Known to Have Been Hospitalized</b>	72517	92.2%
<b>Deaths</b>		
<b>Died</b>	1149	1.5%

# COVID-19 Related Death Demographics\*



\*"Other" includes Native Hawaiian/Pacific Islander and American Indian/Native American

# Map of Change in COVID-19 Cases by Zip Code\*



\*Note: Please see table below for more details on COVID-19 cases reported by zip code.



## Table of COVID-19 Cases by Zip Code\*

Zip	Previous 10/5	Current 10/12	Percent of Total	Previous 14 Days 9/9-9/22	Recent 14 Days 9/23-10/6	Percent Change in 14-day periods
<b>All DeKalb</b>	77646	78650	100.0%	2929	1654	-43.5%
<b>30058</b>	6516	6605	8.4%	302	160	-47.0%
<b>30083</b>	5744	5810	7.4%	235	138	-41.3%
<b>30034</b>	5404	5464	6.9%	204	123	-39.7%
<b>30032</b>	4929	5030	6.4%	192	129	-32.8%
<b>30038</b>	4730	4783	6.1%	197	118	-40.1%
<b>30319</b>	3961	4039	5.1%	96	77	-19.8%
<b>30341</b>	3493	3526	4.5%	115	55	-52.2%
<b>30084</b>	3177	3208	4.1%	92	48	-47.8%
<b>30329</b>	3114	3163	4.0%	83	60	-27.7%
<b>30338</b>	3072	3092	3.9%	88	46	-47.7%
<b>30340</b>	2846	2882	3.7%	77	66	-14.3%
<b>30088</b>	2779	2830	3.6%	122	63	-48.4%
<b>30087</b>	2700	2726	3.5%	107	44	-58.9%
<b>30033</b>	2471	2504	3.2%	80	58	-27.5%
<b>30035</b>	2373	2418	3.1%	119	77	-35.3%
<b>30021</b>	2307	2328	3.0%	84	35	-58.3%
<b>30316</b>	2259	2289	2.9%	92	50	-45.7%
<b>30294</b>	2227	2248	2.9%	68	45	-33.8%
<b>30345</b>	2132	2162	2.7%	76	34	-55.3%
<b>30030</b>	1966	1998	2.5%	90	47	-47.8%
<b>30360</b>	1409	1432	1.8%	43	23	-46.5%
<b>30317</b>	1187	1201	1.5%	50	11	-78.0%
<b>30307</b>	824	833	1.1%	50	12	-76.0%
<b>30346</b>	654	657	0.8%	22	5	-77.3%
<b>30306</b>	605	607	0.8%	24	23	-4.2%
<b>30322</b>	439	441	0.6%	23	<5	NA
<b>30324</b>	430	432	0.5%	17	9	-47.1%
<b>30002</b>	401	413	0.5%	15	15	0.0%
<b>30350</b>	395	397	0.5%	<5	<5	NA
<b>30288</b>	370	370	0.5%	8	<5	NA
<b>30079</b>	346	353	0.4%	18	10	-44.4%
<b>30328</b>	92	92	0.1%	10	<5	NA
<b>30039</b>	83	83	0.1%	8	<5	NA
<b>30072</b>	55	56	0.1%	6	<5	NA
<b>30094</b>	51	51	0.1%	<5	<5	NA
<b>30012</b>	39	39	0.0%	<5	<5	NA
<b>30315</b>	19	19	0.0%	<5	<5	NA
<b>Unknown</b>	2046	2069	2.6%	43	112	160.5%

\*To account for reporting lag of new diagnoses, the 14-day periods were calculated from a week prior. Data cleaning may lead to reassignment of cases from one territory to another based on corrected addresses which may appear as “decreases” when compared to previous counts. Zip codes with fewer than 5 cases reported were omitted from the table. “Unknown” includes Dekalb residents without a zip code or with an incorrectly entered zip code.