

## Overview

**79,219**  
Confirmed  
cases

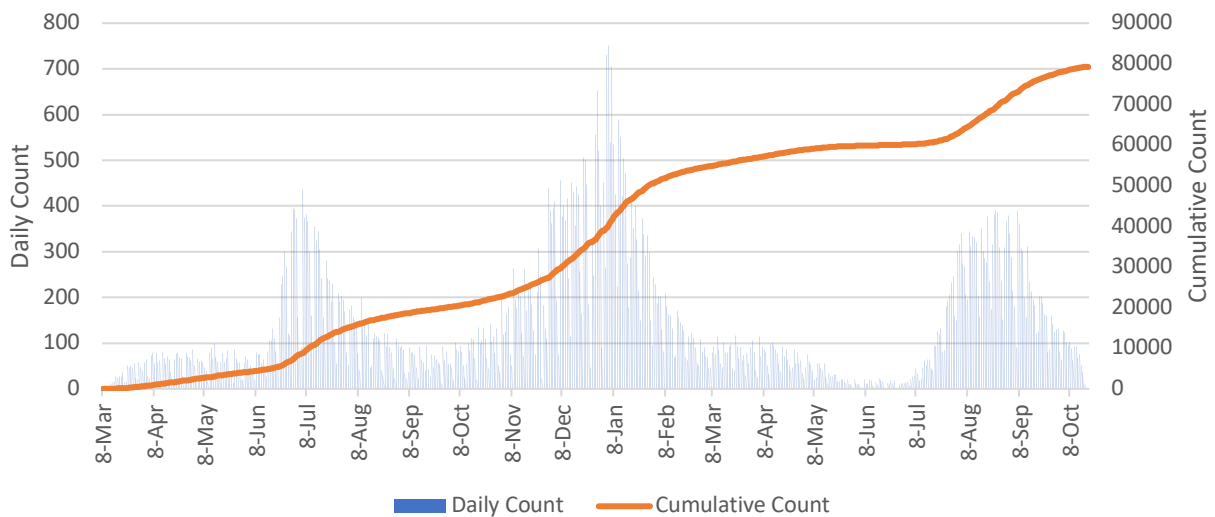
**6.3%** percent  
of Georgia cases  
are in DeKalb

**76** confirmed cases  
per 100K people in  
the last 7 days

**6,196**  
hospitalizations

**1,180**  
deaths

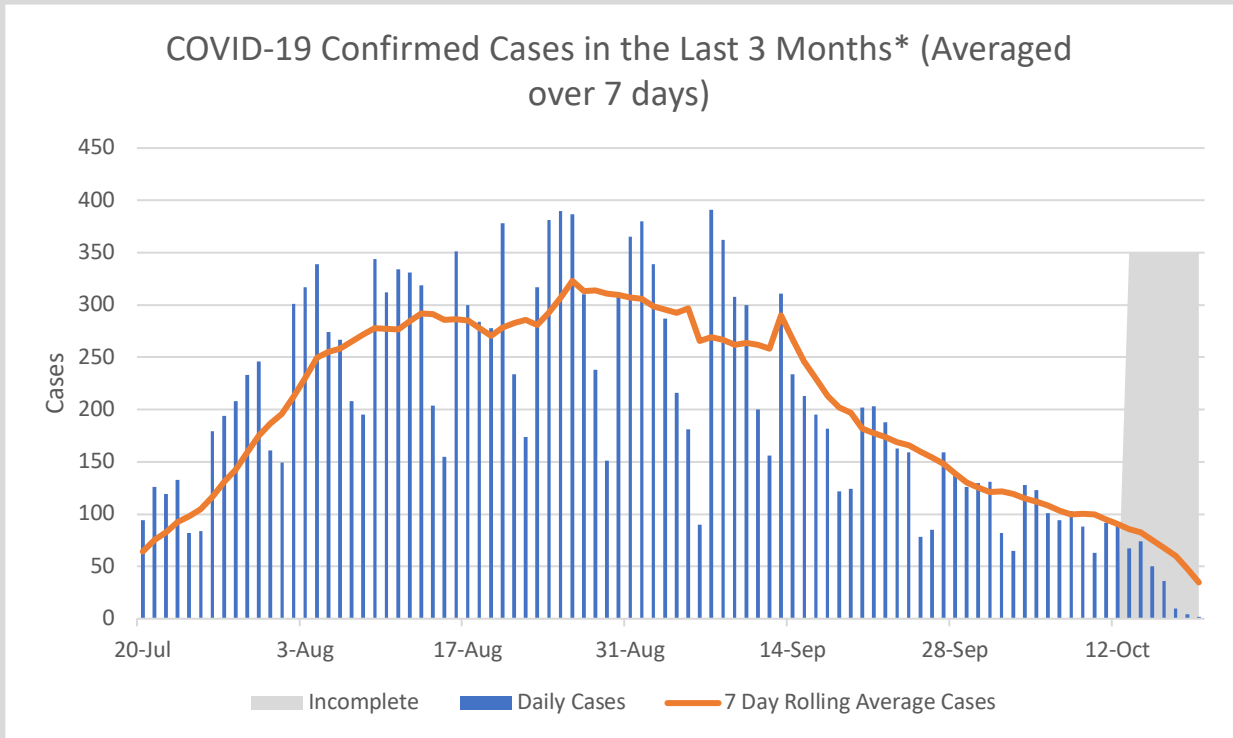
Daily and Cumulative COVID-19 Case Counts,  
DeKalb County\*



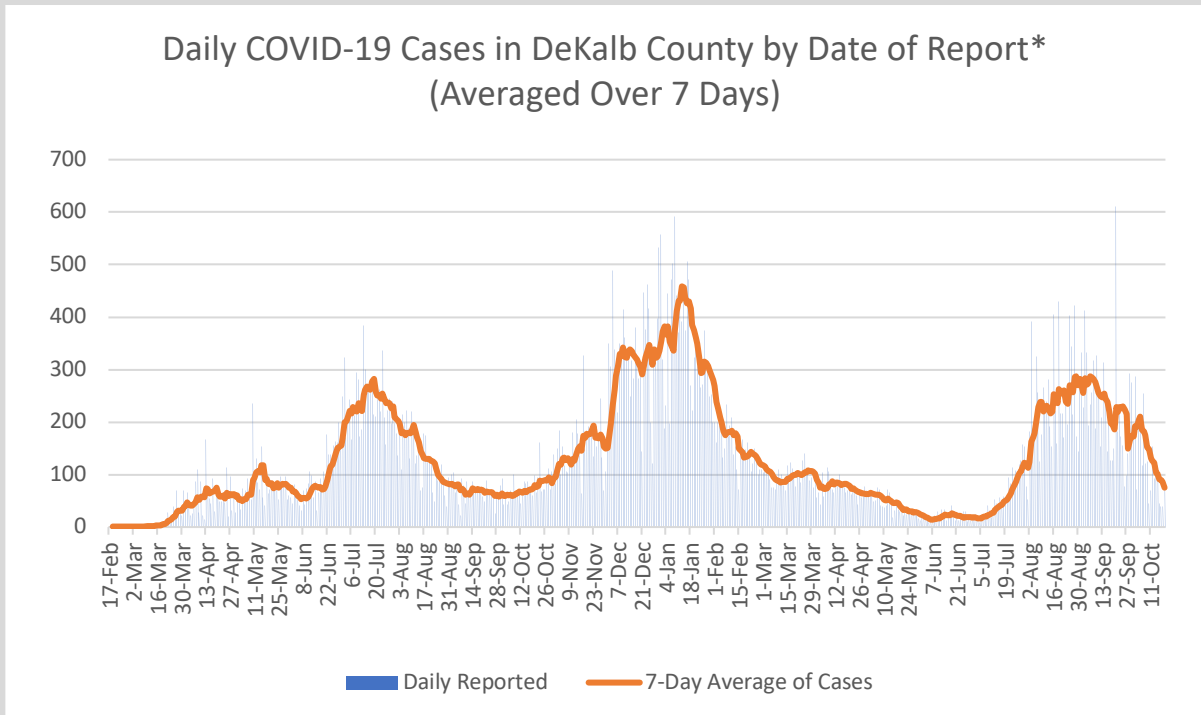
\*Counts shown reflect the number of confirmed cases as of 10/19/21 using the date of first positive sample collection. Where date of first positive sample collection were not available, the date of report creation in GA SENDSS was used instead. \*\*Note: All data reported are preliminary and subject to change. Delays in data reporting may cause changes in data counts, particularly within the last week.

- As of October 19, DeKalb County has reported 79,219 confirmed cases of 2019 novel coronavirus disease (COVID-19) and 1,180 confirmed COVID-19 deaths, an increase of 152 cases (+0.2%) and 12 deaths (+1.0%) since the last report on October 18.
- During the week of 10/7 to 10/13, there were 76 confirmed COVID-19 cases per 100,000 people in DeKalb, which is defined as “substantial” community transmission by the CDC
- 1,359 COVID-19 cases (184 cases per 100,000 population) were diagnosed in the most recent 14-day period (9/30-10/13), a **36.1% DECREASE** from the previous 14-day period (9/16-9/29)
- Of all persons diagnosed with COVID-19 in DeKalb, 7.8% needed hospitalization and 1.5% died
- As of October 19, Georgia Department of Public Health reported that DeKalb accounted for 6.3% of the total number of COVID-19 cases in Georgia to date
- As of October 19, Georgia Department of Public Health reported that DeKalb has administered 846,716 vaccines, and has 436,615 residents with at least one dose (58%) and 391,374 fully vaccinated residents (52%)

# Other Case Count Metrics



\*Counts shown reflect the number of confirmed cases as of 10/19/21 using date of collection. All data reported are preliminary and subject to change. Positive cases from the last 7 days (gray area) are still being collected, and likely to increase.

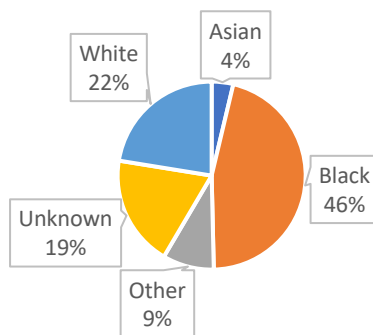


\*Counts shown reflect the number of confirmed cases as of 10/19/21 using date of report creating in GA SendSS. All data reported are preliminary and subject to change.

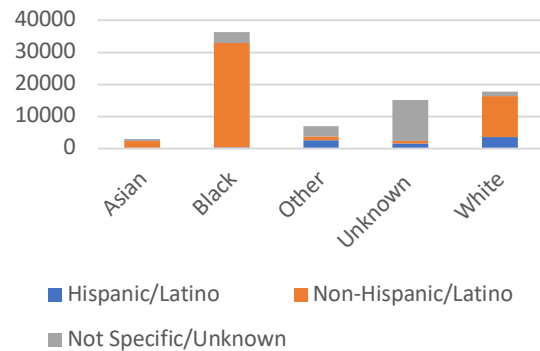
# Demographic Distribution of COVID Cases\*

Demographics		
Gender	N	%
Female	43156	54.5%
Male	35366	44.6%
Unknown	697	0.9%
Age		
9 and Under	4756	6.0%
10 to 19	8639	10.9%
20 to 29	15678	19.8%
30 to 39	15577	19.7%
40 to 49	12144	15.3%
50 to 59	10357	13.1%
60 to 69	6598	8.3%
70 and Over	5179	6.5%
Unknown	291	0.4%
Race		
Asian	2945	3.7%
Black	36375	45.9%
Other	7006	8.8%
Unknown	15111	19.1%
White	17782	22.4%
Ethnicity		
Hispanic/Latino	8224	10.4%
Non-Hispanic/Latino	49515	62.5%
Not Specific/Unknown	21480	27.1%

COVID-19 Cases by Race, DeKalb County

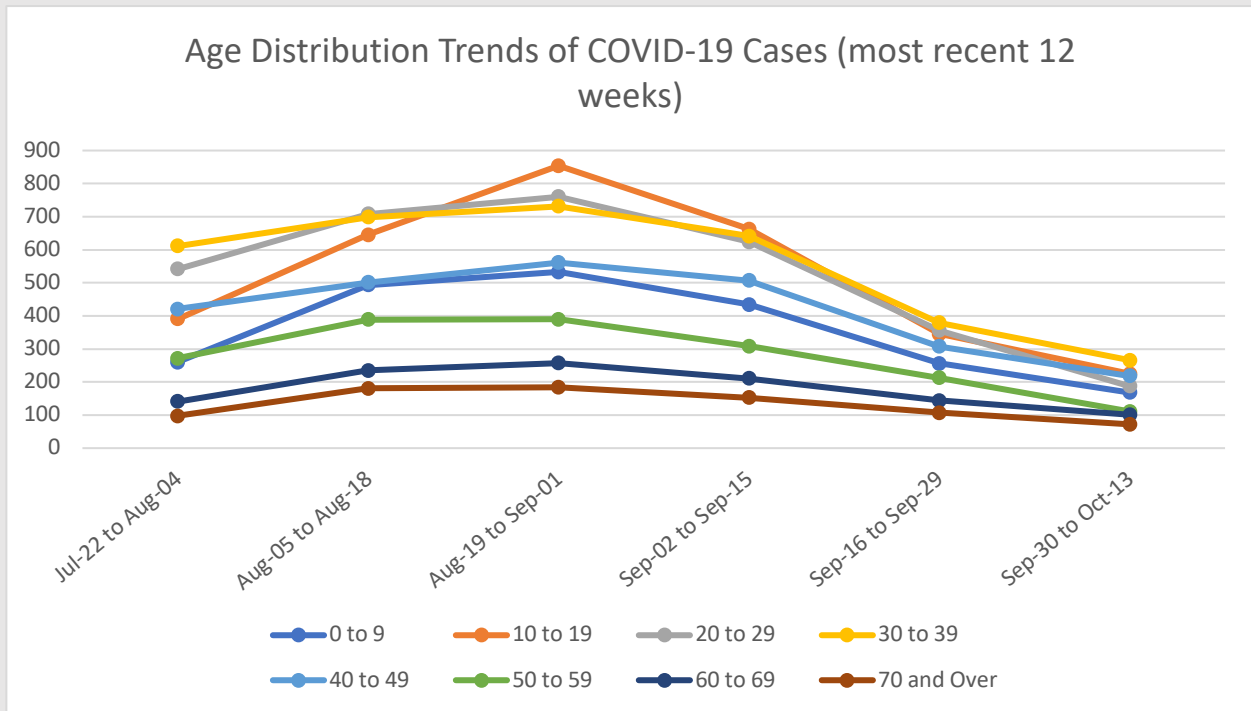
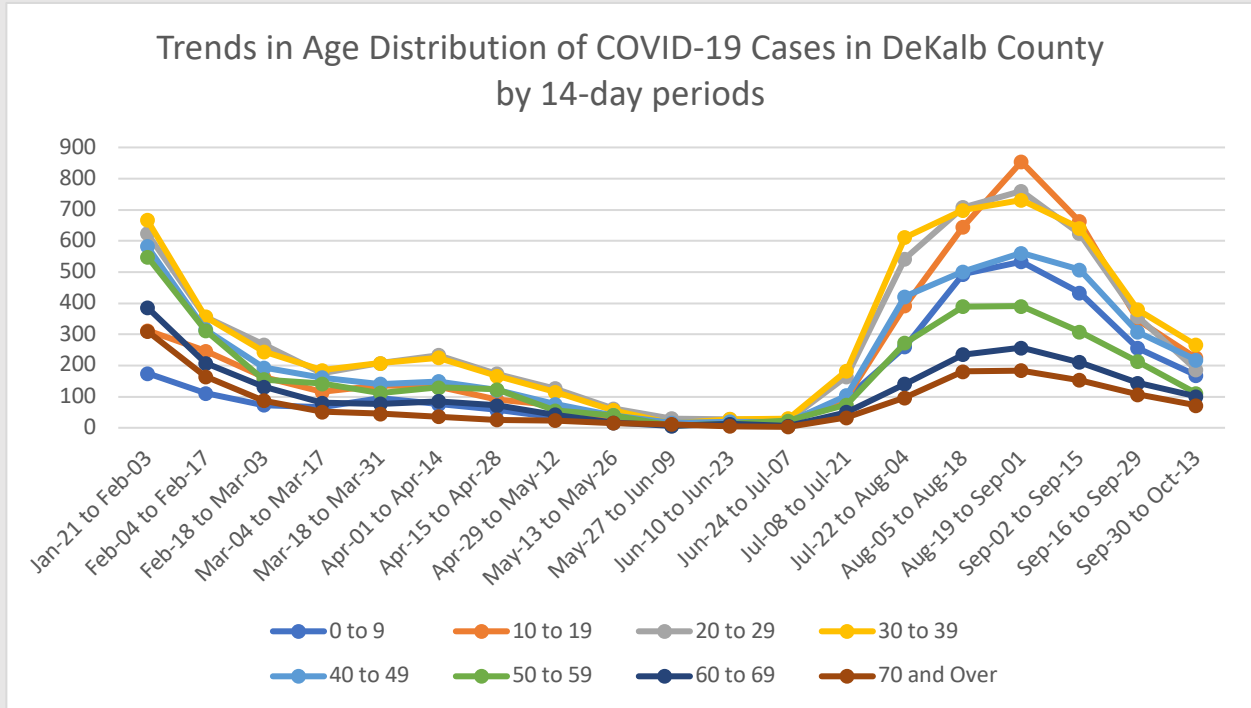


COVID-19 Cases by Race and Ethnicity, DeKalb County



\*"Other" includes Native Hawaiian/Pacific Islander and American Indian/Native American

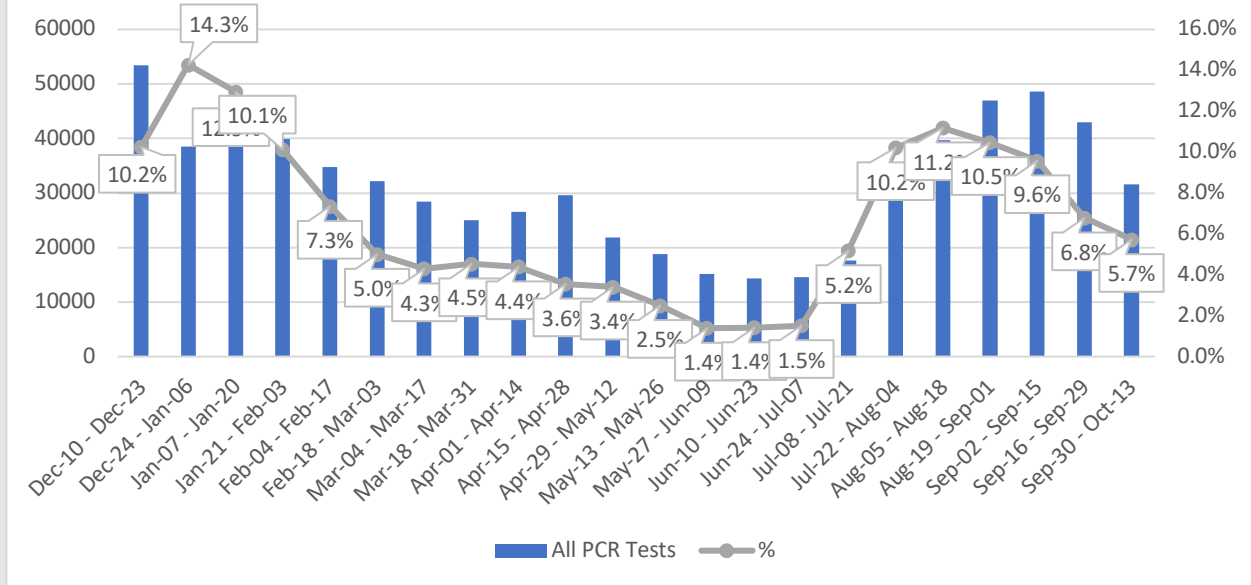
# Age Distribution of COVID Cases\*



\*Counts shown reflect the number of confirmed cases as of 10/19/21 using the date of first positive sample collection. Where date of first positive sample collection were not available, the date of report creation in GA SENDSS was used instead. All data reported are preliminary and subject to change.

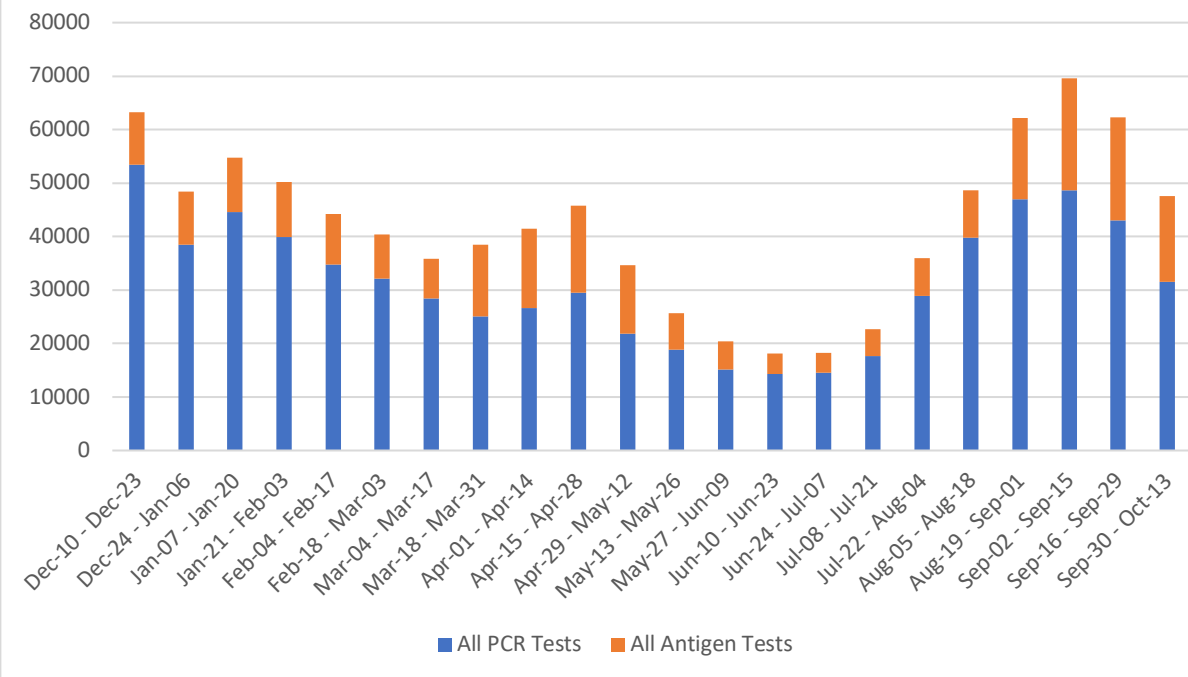
# COVID-19 Testing and Positivity\*

## Trends in positive COVID-19 PCR Tests in DeKalb County by 14-day Periods



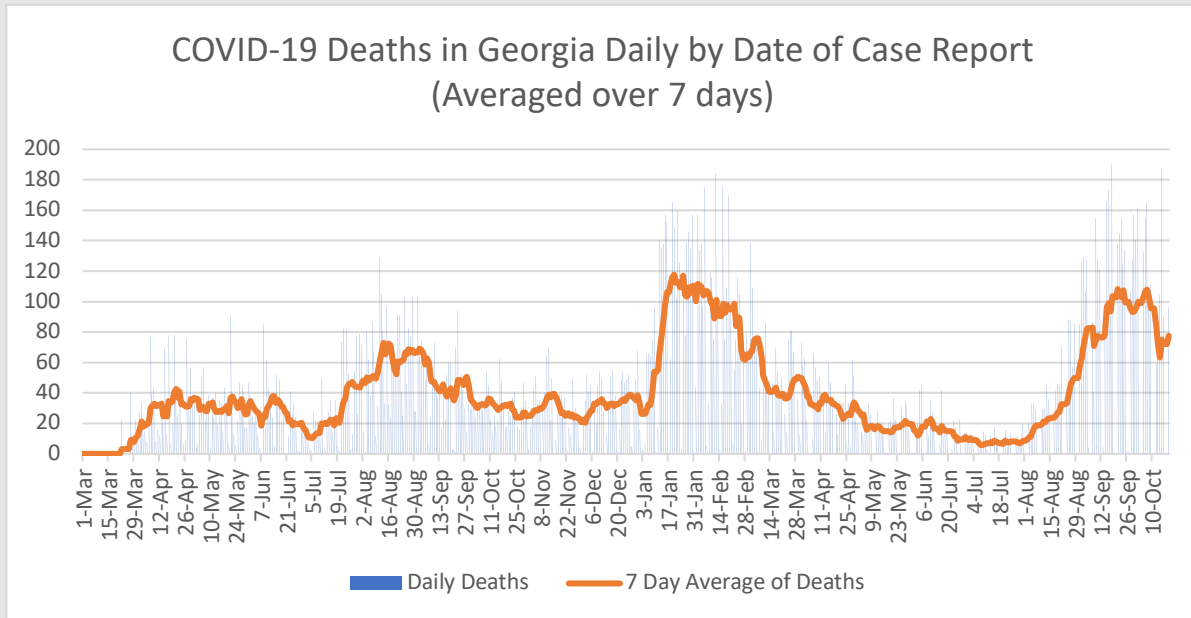
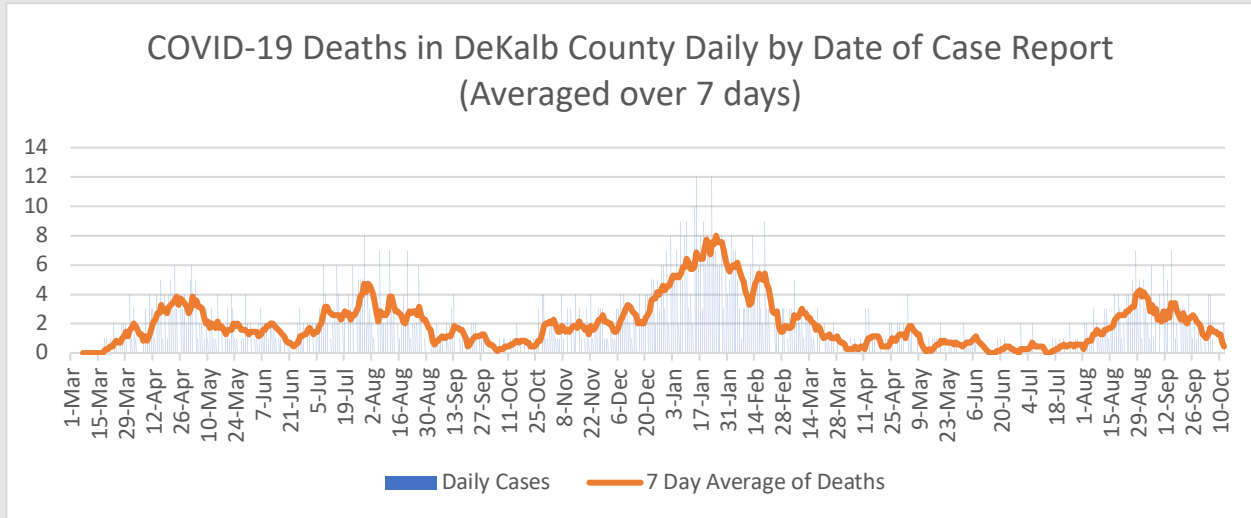
\*Data as of 10/19/2021. Only data on Polymerase Chain Reaction (PCR) tests were included. All data reported are preliminary and subject to change

## Total Testing in DeKalb County by 14-day Periods



\*Data as of 10/19/2021. Negative antigen tests from pop-up sites are not always reported and at-home kits do not report any results, leading to an underreporting of antigen test counts. All data reported are preliminary and subject to change.

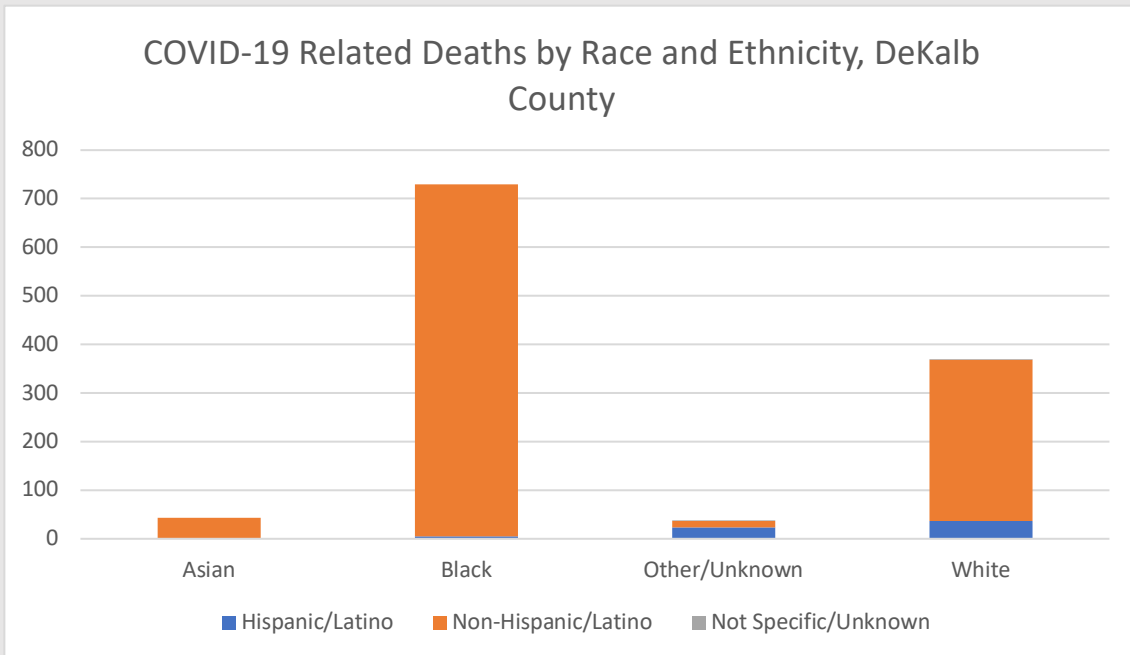
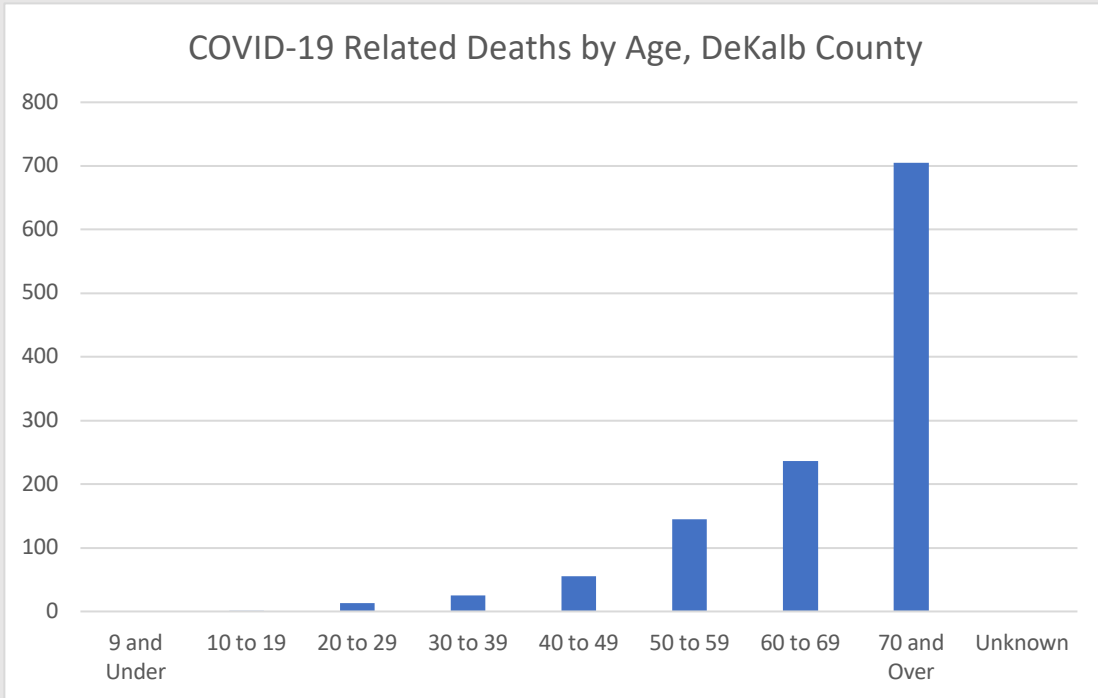
# COVID-19 Related Deaths\*



\*DeKalb County Data as of 10/19/2021. Georgia data as 10/19/2021. Date of case reported used. All data reported are preliminary and subject to change.

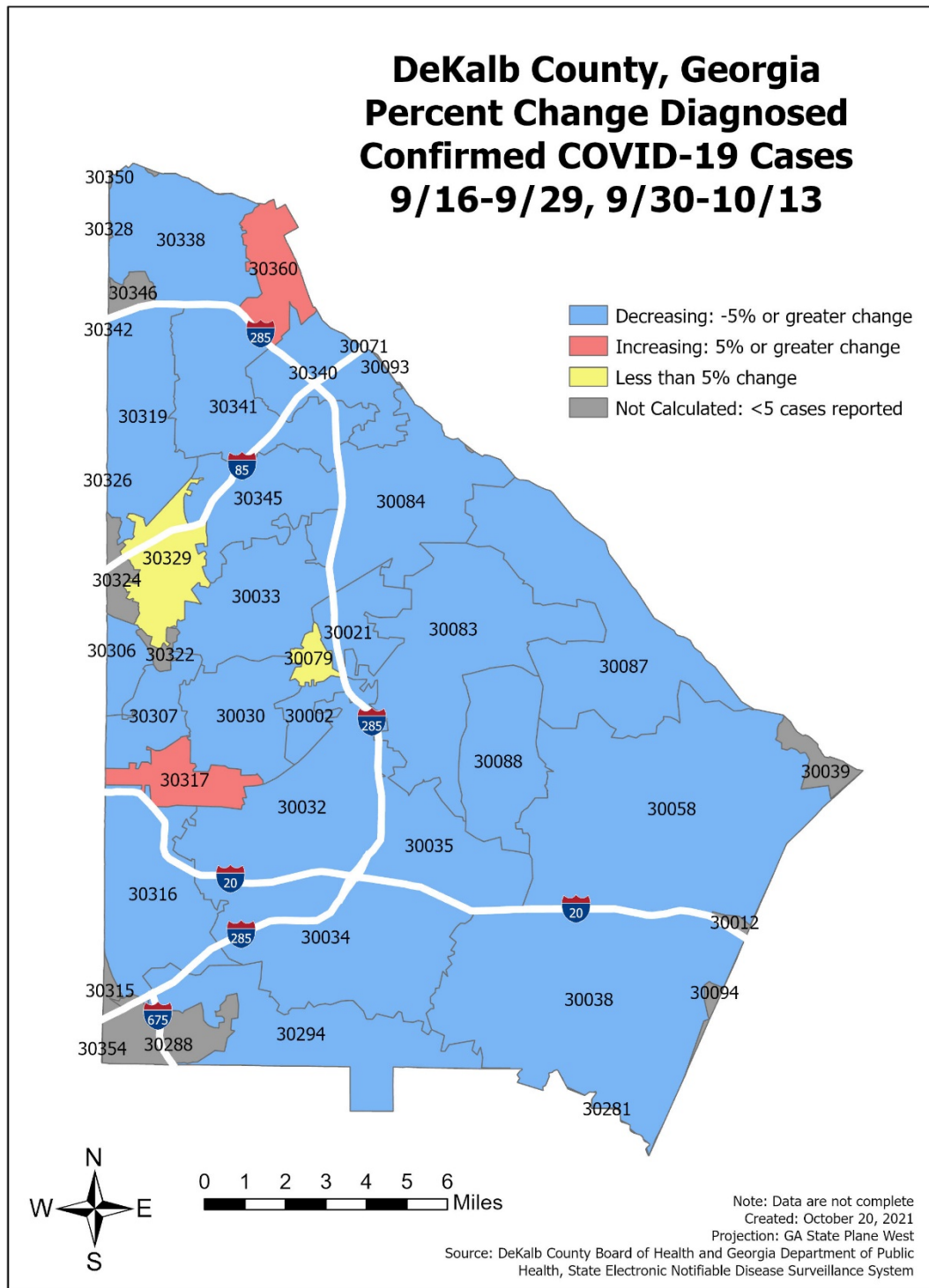
Total COVID-19 Related Hospitalizations/Deaths in DeKalb County, GA	Count	%
<b>Hospitalization</b>		
<b>Needed Hospitalization</b>	6196	7.8%
<b>Not Known to Have Been Hospitalized</b>	73023	92.2%
<b>Deaths</b>		
<b>Died</b>	1180	1.5%

# COVID-19 Related Death Demographics\*



\*"Other" includes Native Hawaiian/Pacific Islander and American Indian/Native American

# Map of Change in COVID-19 Cases by Zip Code\*



\*Note: Please see table below for more details on COVID-19 cases reported by zip code.



## Table of COVID-19 Cases by Zip Code\*

Zip	Previous 10/17	Current 10/19	Percent of Total	Previous 14 Days 9/16-9/29	Recent 14 Days 9/30-10/13	Percent Change in 14-day periods
<b>All DeKalb</b>	79067	79219	100.0%	2127	1359	-36.1%
<b>30058</b>	6636	6649	8.4%	228	122	-46.5%
<b>30083</b>	5845	5864	7.4%	176	98	-44.3%
<b>30034</b>	5491	5503	6.9%	166	85	-48.8%
<b>30032</b>	5067	5074	6.4%	139	125	-10.1%
<b>30038</b>	4810	4816	6.1%	155	85	-45.2%
<b>30319</b>	4054	4061	5.1%	86	68	-20.9%
<b>30341</b>	3545	3553	4.5%	72	43	-40.3%
<b>30084</b>	3222	3229	4.1%	61	46	-24.6%
<b>30329</b>	3184	3194	4.0%	67	64	-4.5%
<b>30338</b>	3099	3107	3.9%	59	43	-27.1%
<b>30340</b>	2900	2902	3.7%	80	50	-37.5%
<b>30088</b>	2839	2843	3.6%	79	44	-44.3%
<b>30087</b>	2740	2743	3.5%	69	38	-44.9%
<b>30033</b>	2514	2520	3.2%	66	52	-21.2%
<b>30035</b>	2429	2434	3.1%	85	55	-35.3%
<b>30021</b>	2334	2336	2.9%	62	23	-62.9%
<b>30316</b>	2306	2307	2.9%	63	44	-30.2%
<b>30294</b>	2254	2261	2.9%	47	32	-31.9%
<b>30345</b>	2177	2185	2.8%	56	36	-35.7%
<b>30030</b>	2006	2009	2.5%	52	38	-26.9%
<b>30360</b>	1443	1447	1.8%	32	34	6.3%
<b>30317</b>	1213	1214	1.5%	20	23	15.0%
<b>30307</b>	841	843	1.1%	26	9	-65.4%
<b>30346</b>	657	657	0.8%	14	<5	NA
<b>30306</b>	609	611	0.8%	27	8	-70.4%
<b>30322</b>	442	442	0.6%	<5	<5	NA
<b>30324</b>	435	435	0.5%	15	<5	NA
<b>30002</b>	417	417	0.5%	14	13	-7.1%
<b>30350</b>	399	399	0.5%	<5	<5	NA
<b>30288</b>	371	371	0.5%	<5	<5	NA
<b>30079</b>	360	360	0.5%	13	13	0.0%
<b>30328</b>	92	92	0.1%	<5	<5	NA
<b>30039</b>	84	85	0.1%	<5	<5	NA
<b>30072</b>	57	57	0.1%	<5	<5	NA
<b>30094</b>	53	52	0.1%	<5	<5	NA
<b>30012</b>	39	39	0.0%	<5	<5	NA
<b>30315</b>	19	19	0.0%	<5	<5	NA
<b>Unknown</b>	2083	2089	2.6%	41	75	82.9%

\*To account for reporting lag of new diagnoses, the 14-day periods were calculated from a week prior. Data cleaning may lead to reassignment of cases from one territory to another based on corrected addresses which may appear as “decreases” when compared to previous counts. Zip codes with fewer than 5 cases reported were omitted from the table. “Unknown” includes Dekalb residents without a zip code or with an incorrectly entered zip code.