

Overview

79,945
Confirmed
cases

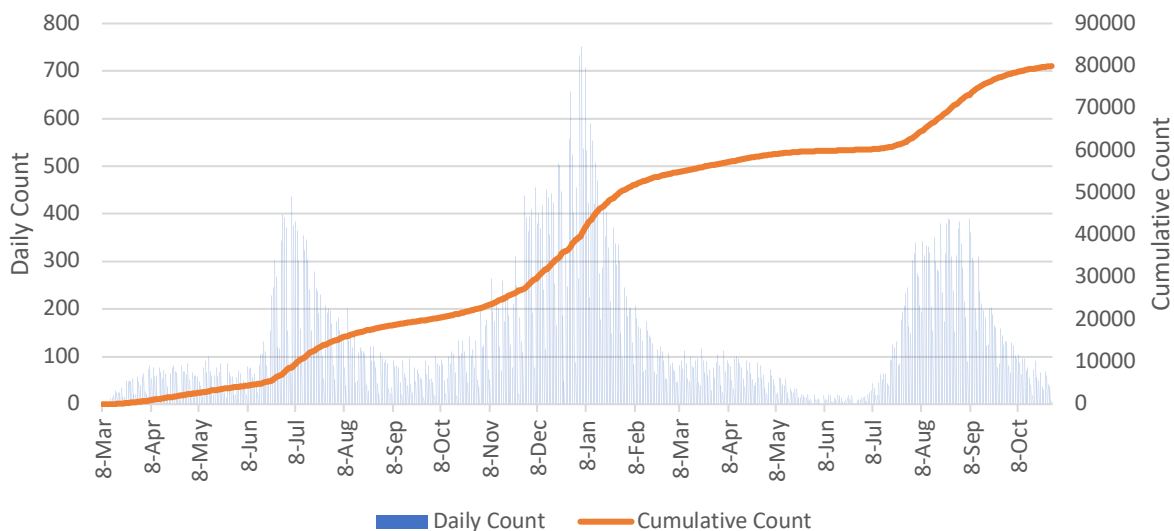
6.3% percent
of Georgia cases
are in Dekalb

50 confirmed cases
per 100K people in
the last 7 days

6,285
hospitalizations

1,208
deaths

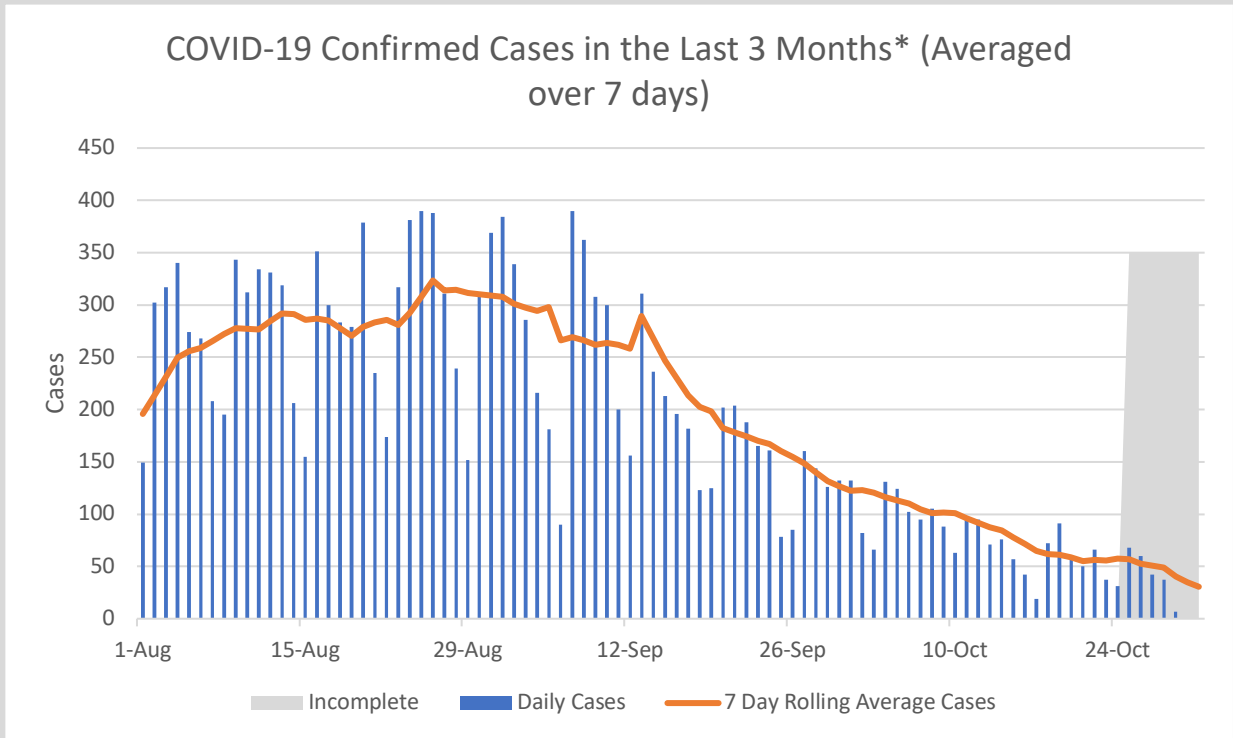
Daily and Cumulative COVID-19 Case Counts, DeKalb County*



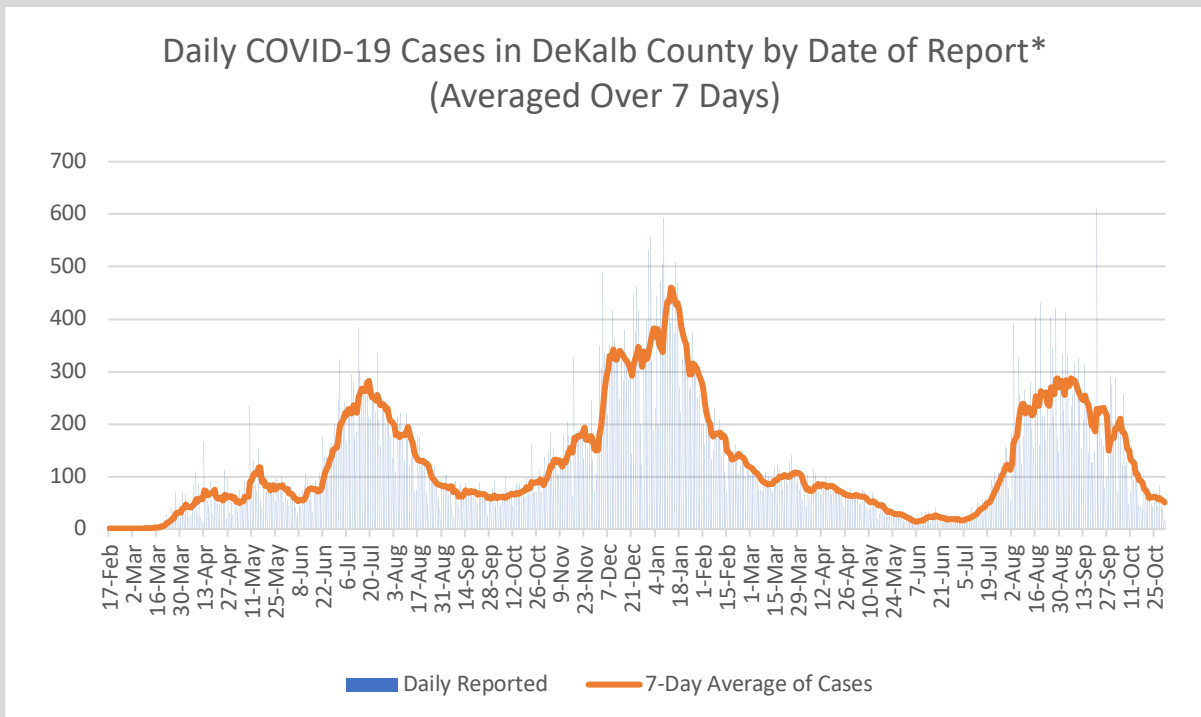
*Counts shown reflect the number of confirmed cases as of 10/31/21 using the date of first positive sample collection. Where date of first positive sample collection were not available, the date of report creation in GA SENDSS was used instead. **Note: All data reported are preliminary and subject to change. Delays in data reporting may cause changes in data counts, particularly within the last week.

- As of October 31, DeKalb County has reported 79,945 confirmed cases of 2019 novel coronavirus disease (COVID-19) and 1,208 confirmed COVID-19 deaths, an increase of 303 cases (+0.4%) and 12 deaths (+1.0%) since the last report on October 27.
- During the week of 10/19 to 10/25, there were 50 confirmed COVID-19 cases per 100,000 people in Dekalb, which is defined as “substantial” community transmission by the CDC
- 831 COVID-19 cases (104 cases per 100,000 population) were diagnosed in the most recent 14-day period (10/12-10/25), a **44% DECREASE** from the previous 14-day period (9/28-10/11)
- Of all persons diagnosed with COVID-19 in DeKalb, 7.8% needed hospitalization and 1.5% died
- As of October 29, Georgia Department of Public Health reported that DeKalb accounted for 6.3% of the total number of COVID-19 cases in Georgia to date
- As of October 29, Georgia Department of Public Health reported that DeKalb has administered 867,665 vaccines, and has 439,444 residents with at least one dose (59%) and 395,215 fully vaccinated residents (53%)

Other Case Count Metrics



*Counts shown reflect the number of confirmed cases as of 10/31/21 using date of collection. All data reported are preliminary and subject to change. Positive cases from the last 7 days (gray area) are still being collected, and likely to increase.

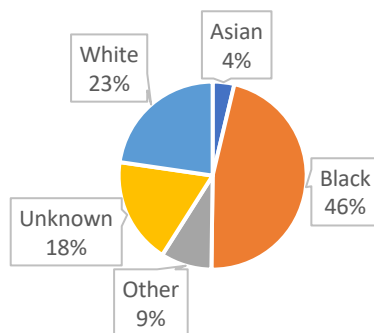


*Counts shown reflect the number of confirmed cases as of 10/31/21 using date of report creating in GA SendSS. All data reported are preliminary and subject to change.

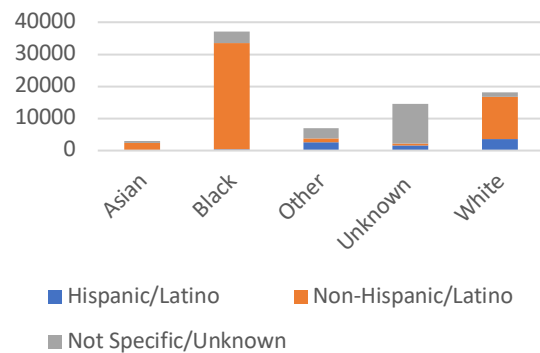
Demographic Distribution of COVID Cases*

Demographics		
Gender	N	%
Female	43551	54.5%
Male	35689	44.6%
Unknown	705	0.9%
Age		
9 and Under	4841	6.1%
10 to 19	8739	10.9%
20 to 29	15819	19.8%
30 to 39	15717	19.7%
40 to 49	12245	15.3%
50 to 59	10436	13.1%
60 to 69	6644	8.3%
70 and Over	5210	6.5%
Unknown	294	0.4%
Race		
Asian	2980	3.7%
Black	37162	46.5%
Other	7030	8.8%
Unknown	14627	18.3%
White	18146	22.7%
Ethnicity		
Hispanic/Latino	8302	10.4%
Non-Hispanic/Latino	50469	63.1%
Not Specific/Unknown	21174	26.5%

COVID-19 Cases by Race, DeKalb County

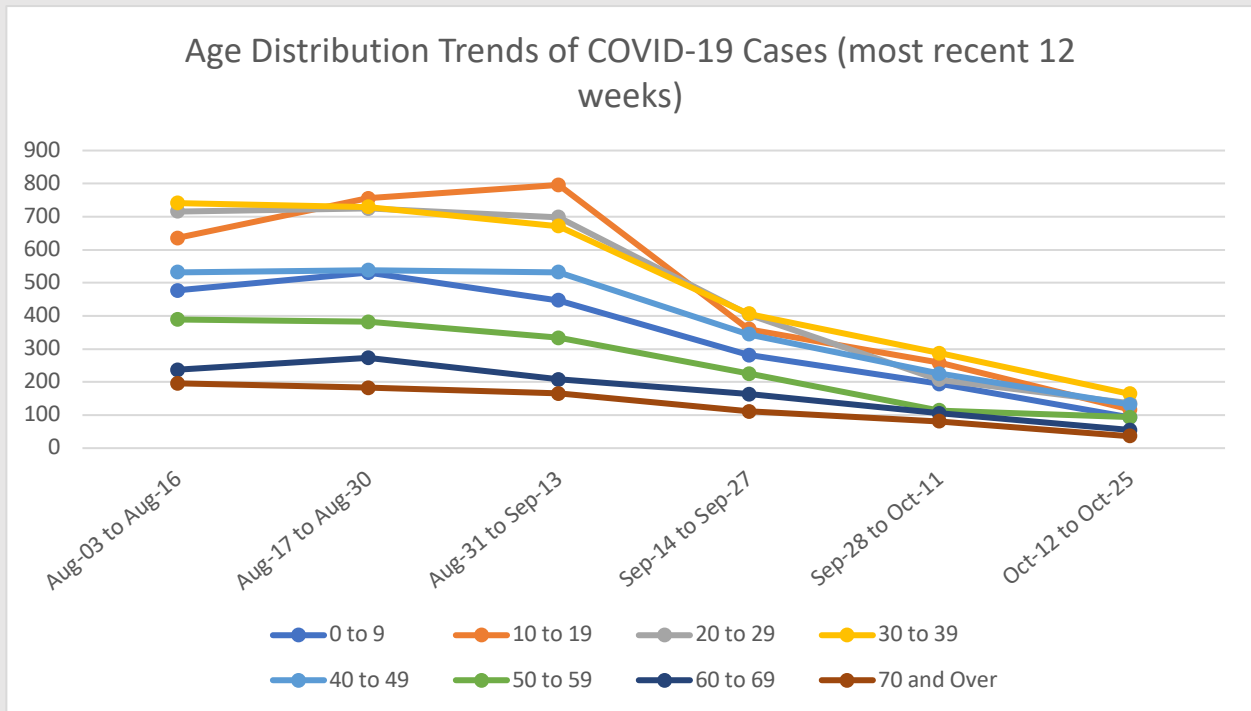
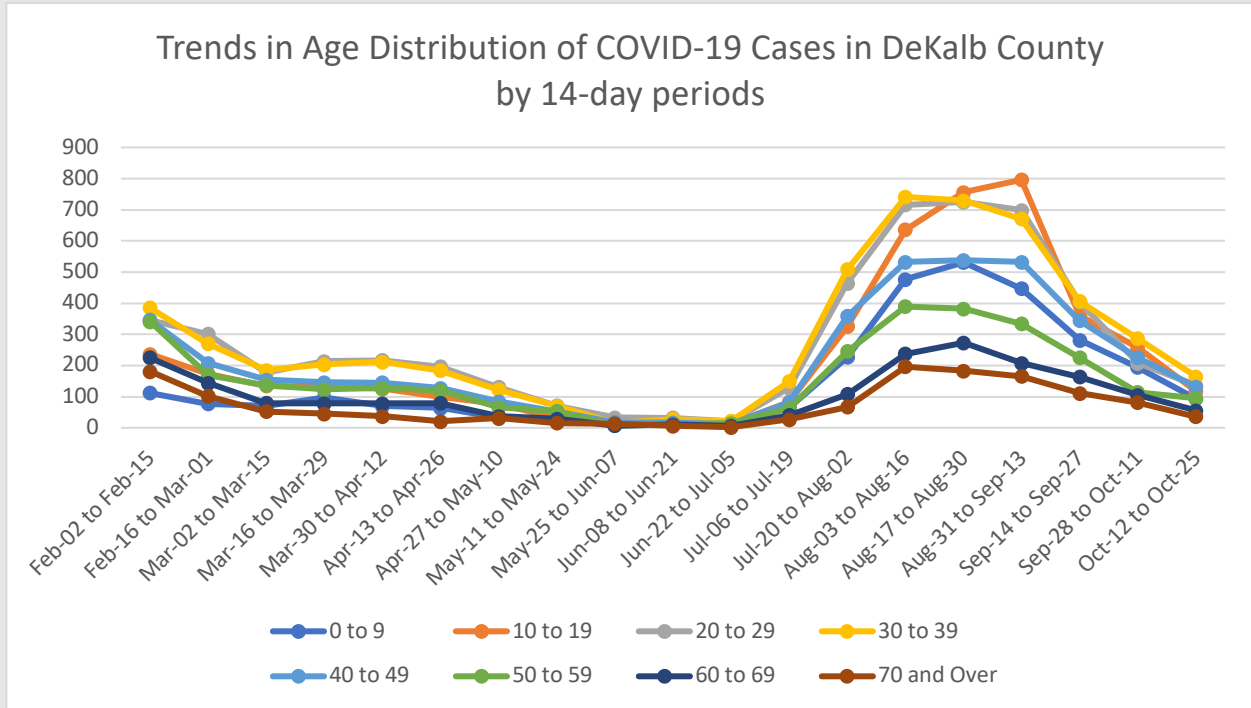


COVID-19 Cases by Race and Ethnicity, DeKalb County



*"Other" includes Native Hawaiian/Pacific Islander and American Indian/Native American

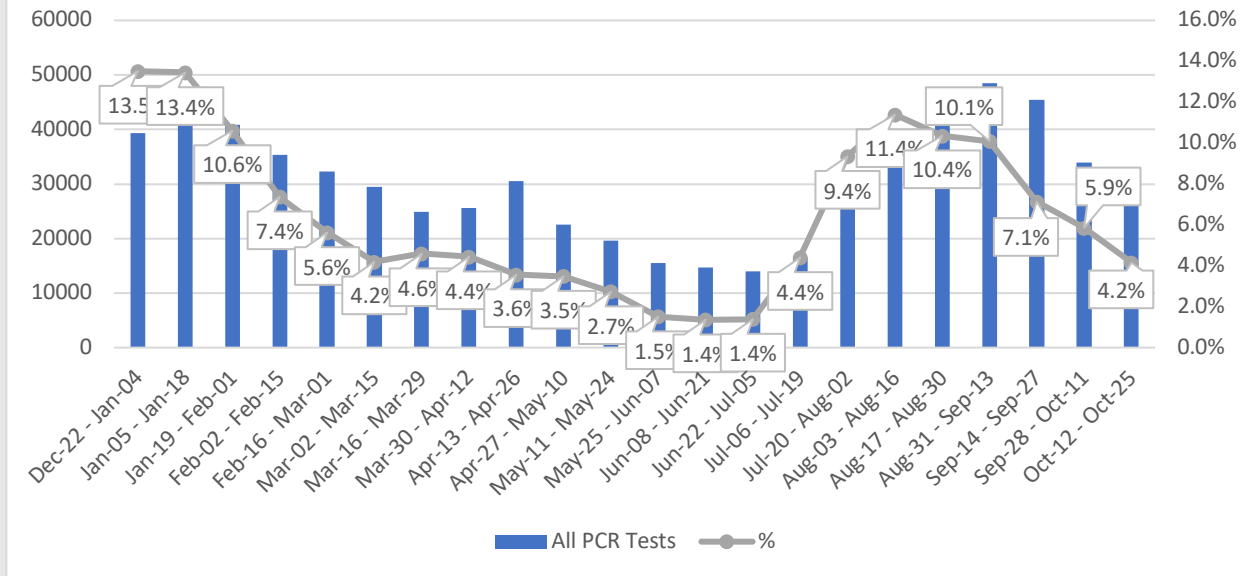
Age Distribution of COVID Cases*



*Counts shown reflect the number of confirmed cases as of 10/31/21 using the date of first positive sample collection. Where date of first positive sample collection were not available, the date of report creation in GA SENDSS was used instead. All data reported are preliminary and subject to change.

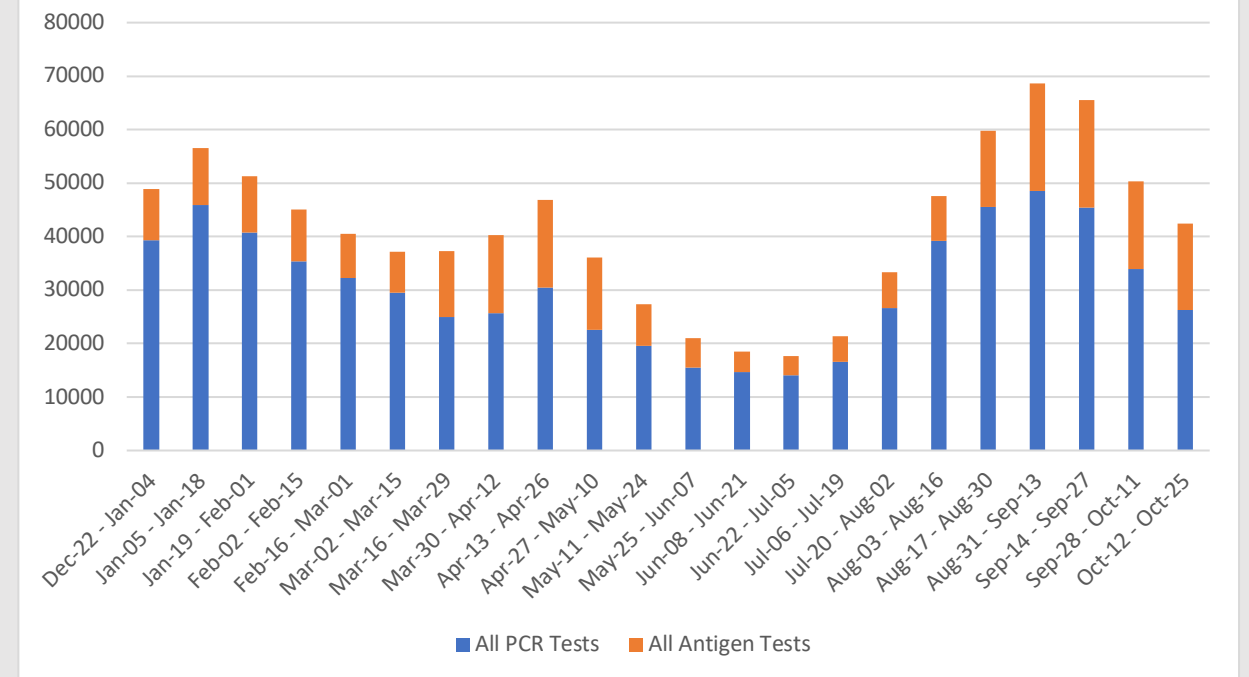
COVID-19 Testing and Positivity*

Trends in positive COVID-19 PCR Tests in DeKalb County by 14-day Periods



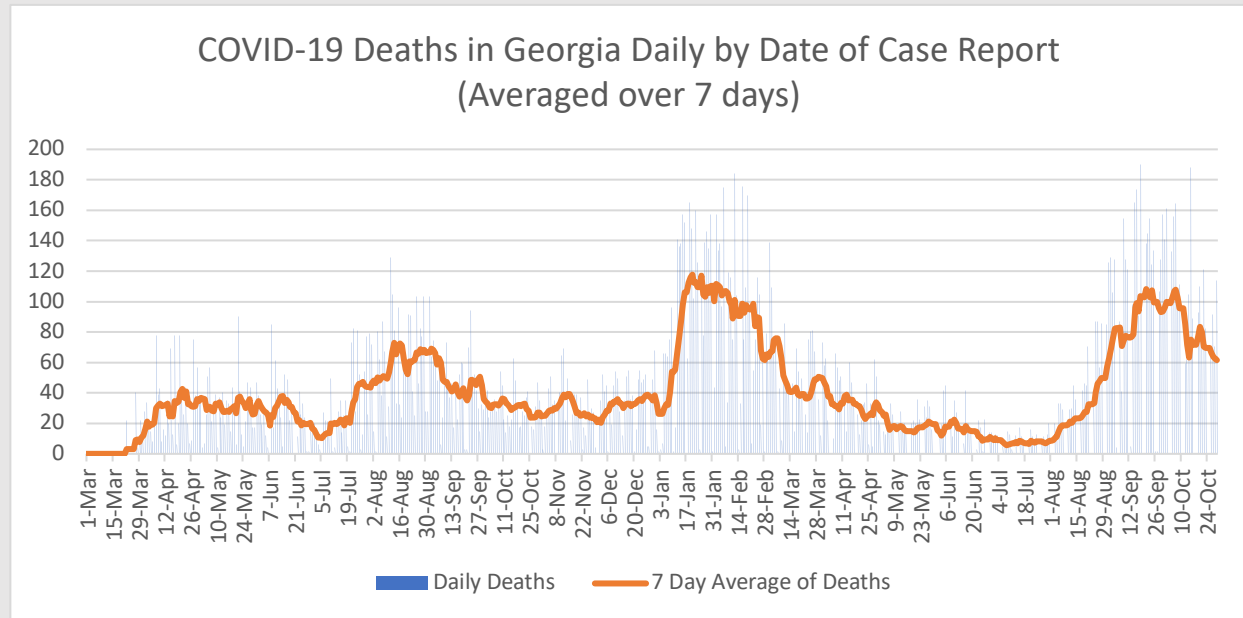
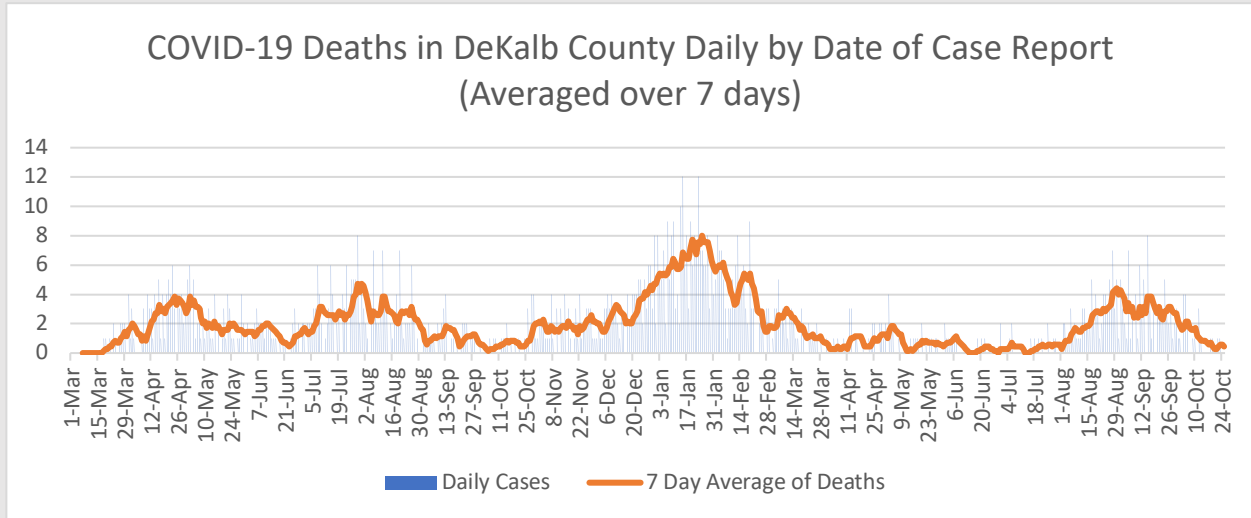
*Data as of 10/29/2021. Only data on Polymerase Chain Reaction (PCR) tests were included. All data reported are preliminary and subject to change

Total Testing in DeKalb County by 14-day Periods



*Data as of 10/29/2021. Negative antigen tests from pop-up sites are not always reported and at-home kits do not report any results, leading to an underreporting of antigen test counts. All data reported are preliminary and subject to change.

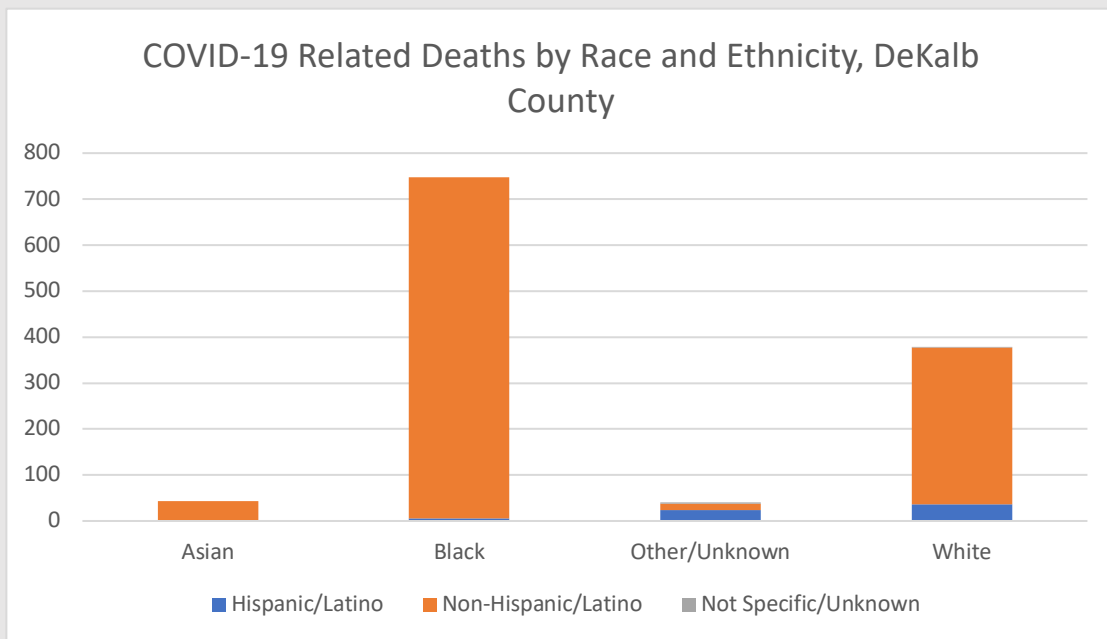
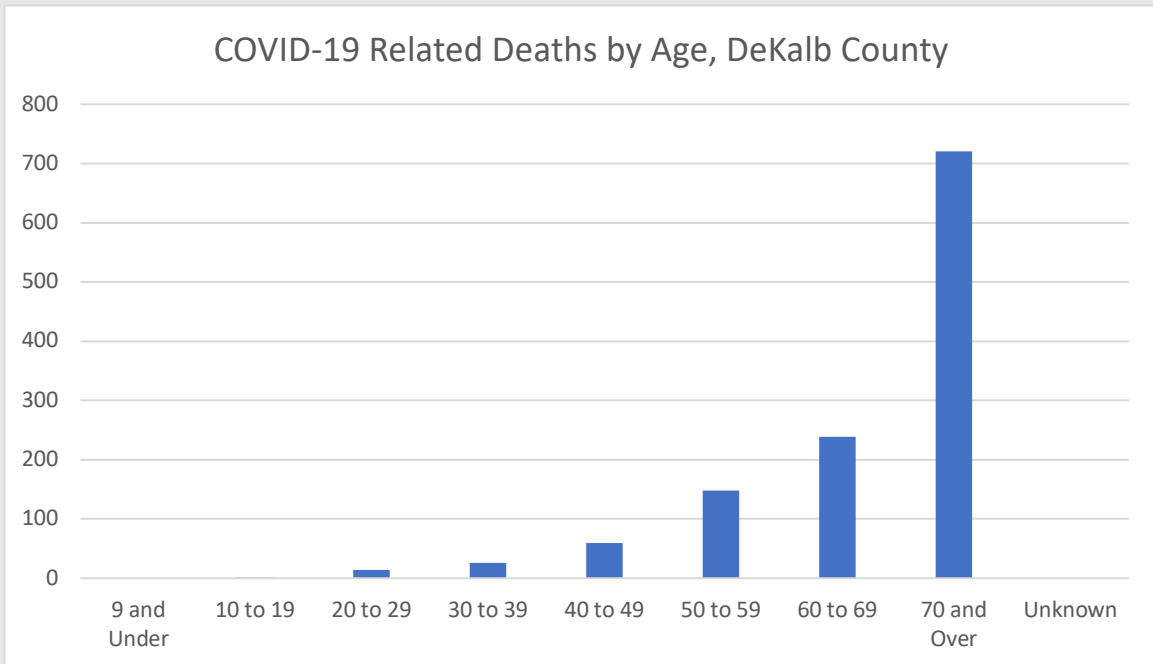
COVID-19 Related Deaths*



*DeKalb County Data as of 10/31/2021. Georgia data as 10/29/2021. Date of case reported used. All data reported are preliminary and subject to change.

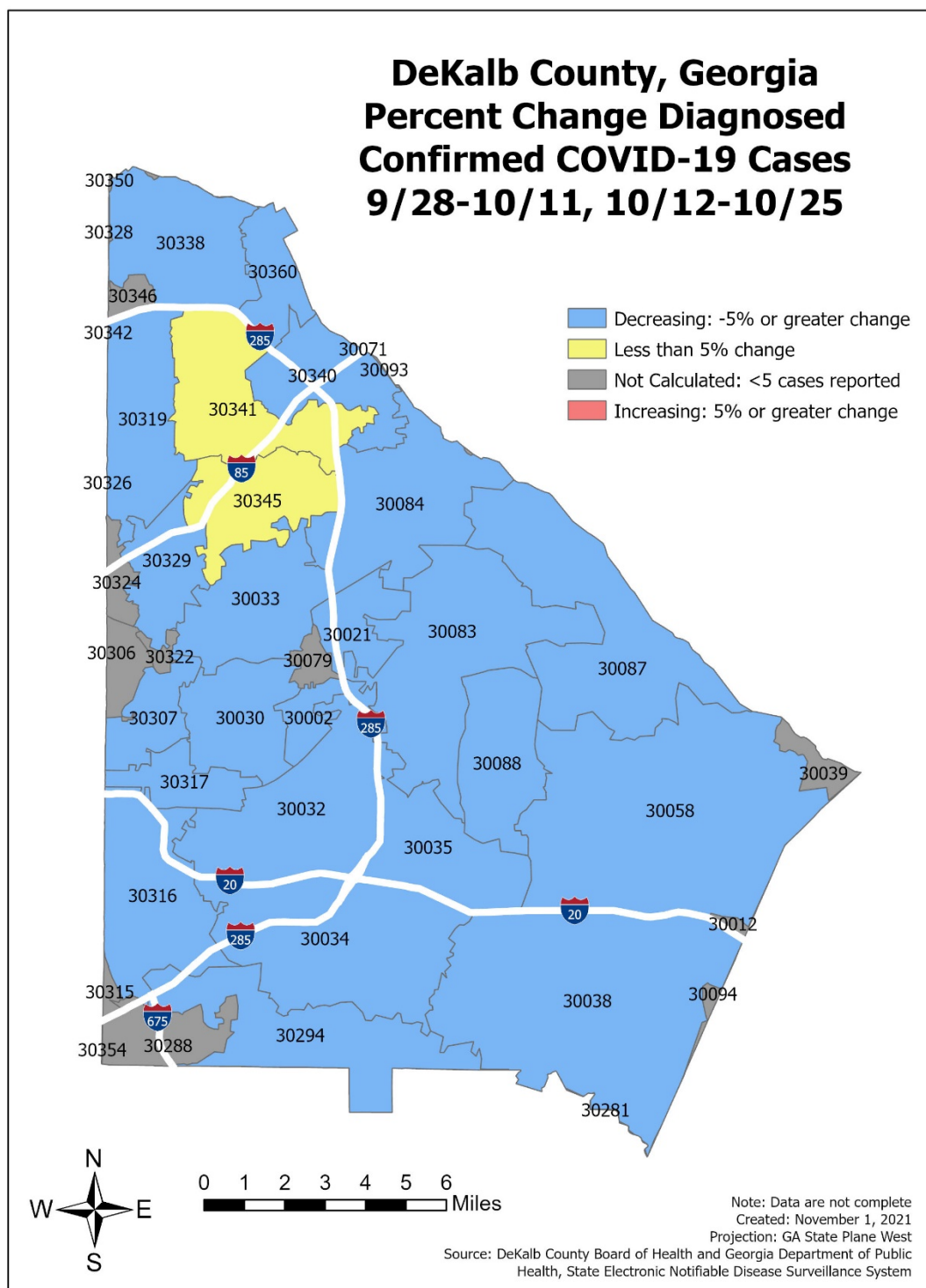
Total COVID-19 Related Hospitalizations/Deaths in DeKalb County, GA	Count	%
Hospitalization		
Needed Hospitalization	6285	7.9%
Not Known to Have Been Hospitalized	73660	92.1%
Deaths		
Died	1208	1.5%

COVID-19 Related Death Demographics*



*"Other" includes Native Hawaiian/Pacific Islander and American Indian/Native American

Map of Change in COVID-19 Cases by Zip Code*



*Note: Please see table below for more details on COVID-19 cases reported by zip code.

Table of COVID-19 Cases by Zip Code*

Zip	Previous 10/26	Current 10/31	Percent of Total	Previous 14 Days 9/28-10/11	Recent 14 Days 10/12-10/25	Percent Change in 14-day periods
All DeKalb	79642	79945	100.0%	1485	831	-44.0%
30058	6699	6742	8.4%	132	78	-40.9%
30083	5894	5905	7.4%	106	68	-35.8%
30034	5521	5541	6.9%	101	46	-54.5%
30032	5099	5117	6.4%	129	52	-59.7%
30038	4834	4844	6.1%	101	44	-56.4%
30319	4083	4087	5.1%	73	33	-54.8%
30341	3572	3590	4.5%	45	45	0.0%
30084	3238	3245	4.1%	51	14	-72.5%
30329	3212	3229	4.0%	63	39	-38.1%
30338	3126	3136	3.9%	49	32	-34.7%
30340	2915	2924	3.7%	55	34	-38.2%
30088	2855	2866	3.6%	57	28	-50.9%
30087	2750	2754	3.4%	36	22	-38.9%
30033	2536	2551	3.2%	61	26	-57.4%
30035	2453	2460	3.1%	63	28	-55.6%
30021	2340	2348	2.9%	26	15	-42.3%
30316	2323	2345	2.9%	43	28	-34.9%
30294	2271	2277	2.8%	41	21	-48.8%
30345	2200	2209	2.8%	33	34	3.0%
30030	2028	2044	2.6%	44	30	-31.8%
30360	1464	1467	1.8%	38	22	-42.1%
30317	1223	1229	1.5%	20	18	-10.0%
30307	847	849	1.1%	11	7	-36.4%
30346	660	660	0.8%	<5	<5	NA
30306	615	618	0.8%	13	<5	NA
30322	445	445	0.6%	<5	<5	NA
30324	434	437	0.5%	<5	<5	NA
30002	419	426	0.5%	13	7	-46.2%
30350	401	403	0.5%	<5	<5	NA
30288	373	378	0.5%	<5	6	NA
30079	362	363	0.5%	16	<5	NA
30328	94	95	0.1%	<5	<5	NA
30039	85	86	0.1%	<5	<5	NA
30072	57	57	0.1%	<5	<5	NA
30094	52	52	0.1%	<5	<5	NA
30012	39	39	0.0%	<5	<5	NA
30315	20	20	0.0%	<5	<5	NA
Unknown	2102	2107	2.6%	22	51	131.8%

*To account for reporting lag of new diagnoses, the 14-day periods were calculated from a week prior. Data cleaning may lead to reassignment of cases from one territory to another based on corrected addresses which may appear as “decreases” when compared to previous counts. Zip codes with fewer than 5 cases reported were omitted from the table. “Unknown” includes Dekalb residents without a zip code or with an incorrectly entered zip code.