

Overview

80,418
Confirmed
cases

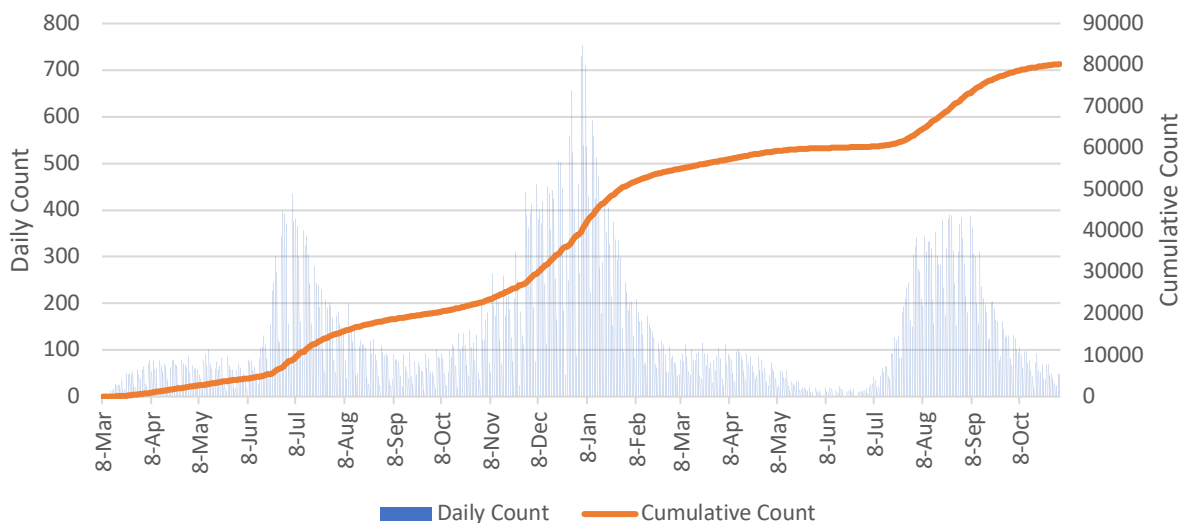
6.3% percent
of Georgia cases
are in Dekalb

45 cases per 100K
people in the last 7
days

6,369
hospitalizations

1,218
deaths

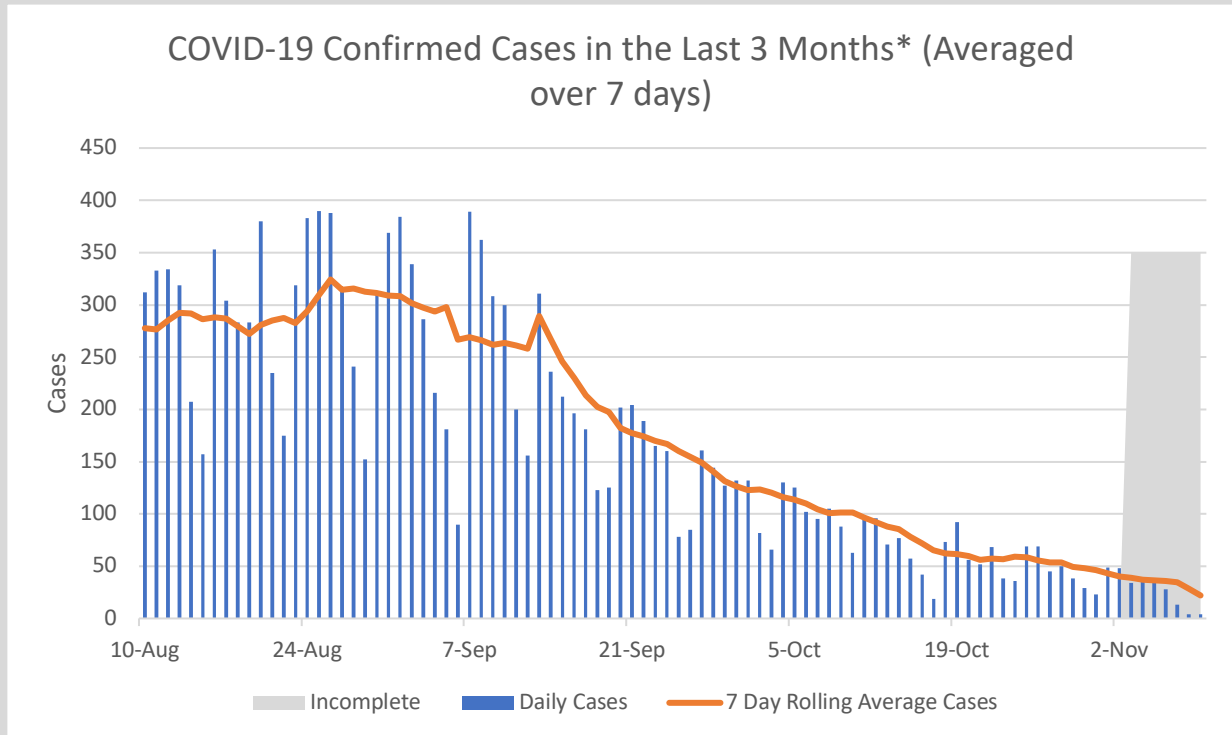
Daily and Cumulative COVID-19 Case Counts,
DeKalb County*



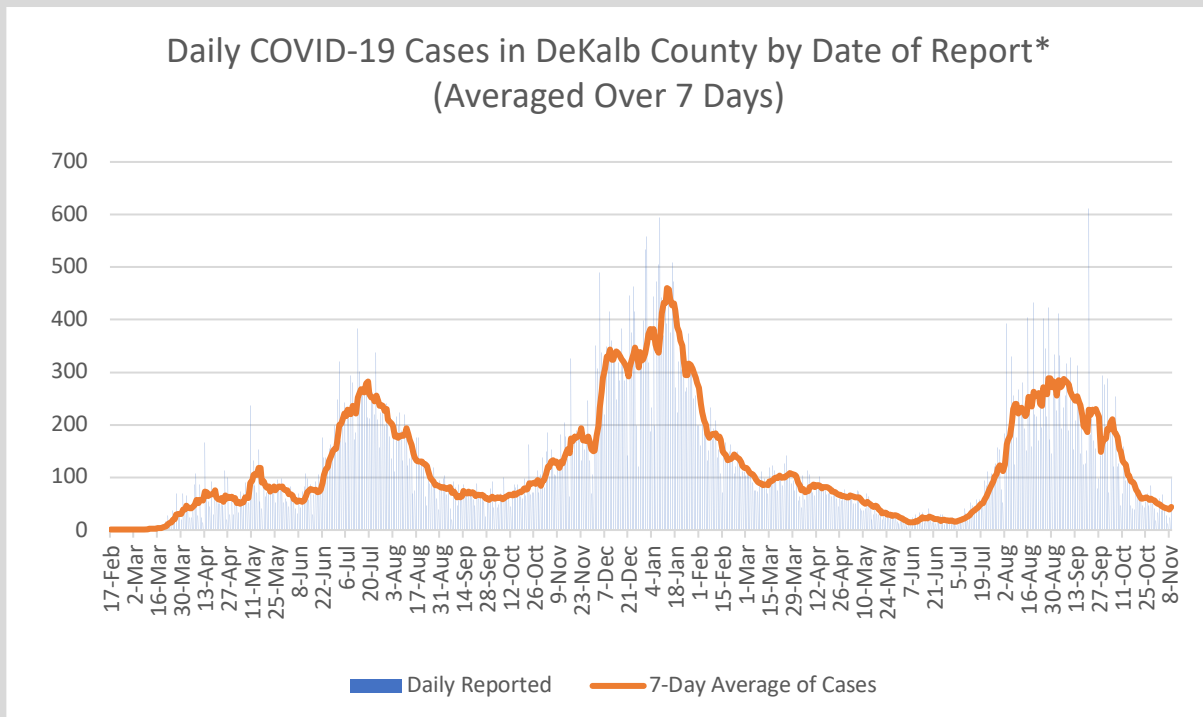
*Counts shown reflect the number of confirmed cases as of 11/9/21 using the date of first positive sample collection. Where date of first positive sample collection were not available, the date of report creation in GA SENDSS was used instead. **Note: All data reported are preliminary and subject to change. Delays in data reporting may cause changes in data counts, particularly within the last week.

- As of November 9, DeKalb County has reported 80,418 confirmed cases of 2019 novel coronavirus disease (COVID-19) and 1,218 confirmed COVID-19 deaths, an increase of 136 cases (+0.2%) and 4 deaths (+0.3%) since the last report on November 8.
- During the week of 11/2 – 11/8, there were 45 COVID-19 cases per 100,000 people in Dekalb, which is defined as “moderate” community transmission by the CDC
- 648 COVID-19 cases (82 cases per 100,000 population) were diagnosed in the most recent 14-day period (10/21-11/3), a **37.1% DECREASE** from the previous 14-day period (10/7-10/20)
- Of all persons diagnosed with COVID-19 in DeKalb, 7.9% needed hospitalization and 1.5% died
- As of November 9, Georgia Department of Public Health reported that DeKalb accounted for 6.3% of the total number of COVID-19 cases in Georgia to date
- As of November 9, Georgia Department of Public Health reported that DeKalb has administered 897,723 vaccines, and has 447,786 residents with at least one dose (60%) and 399,797 fully vaccinated residents (53%)

Other Case Count Metrics



*Counts shown reflect the number of confirmed cases as of 11/9/21 using date of collection. All data reported are preliminary and subject to change. Positive cases from the last 7 days (gray area) are still being collected, and likely to increase.

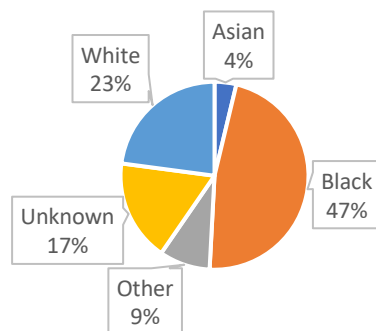


*Counts shown reflect the number of confirmed cases as of 11/9/21 using date of report creating in GA SendSS. All data reported are preliminary and subject to change.

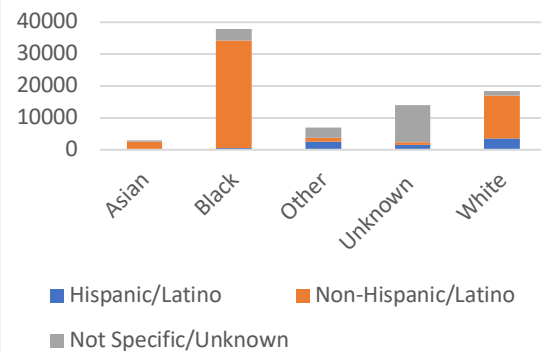
Demographic Distribution of COVID Cases

Demographics		
Gender	N	%
Female	43809	54.5%
Male	35890	44.6%
Unknown	719	0.9%
Age		
9 and Under	4893	6.1%
10 to 19	8795	10.9%
20 to 29	15937	19.8%
30 to 39	15825	19.7%
40 to 49	12326	15.3%
50 to 59	10492	13.0%
60 to 69	6679	8.3%
70 and Over	5253	6.5%
Unknown	218	0.3%
Race		
Asian	3016	3.8%
Black	37866	47.1%
Other	7052	8.8%
Unknown	14071	17.5%
White	18413	22.9%
Ethnicity		
Hispanic/Latino	8360	10.4%
Non-Hispanic/Latino	51393	63.9%
Not Specific/Unknown	20665	25.7%

COVID-19 Cases by Race, DeKalb County

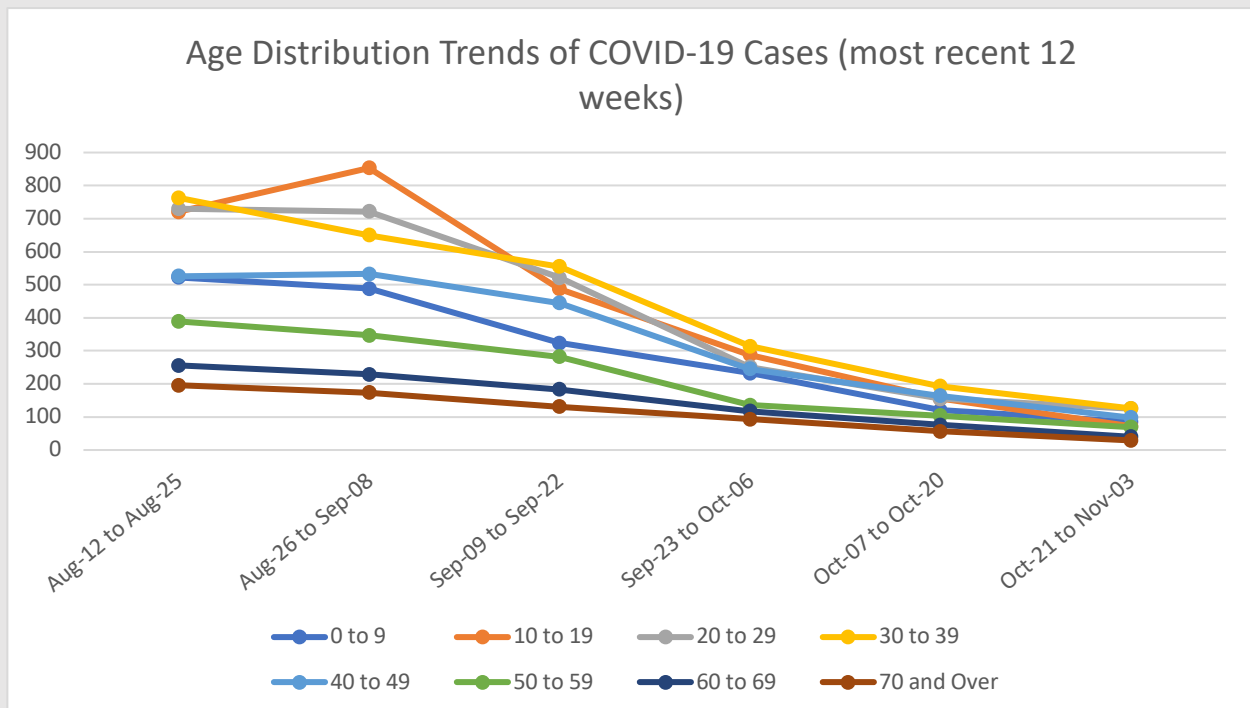
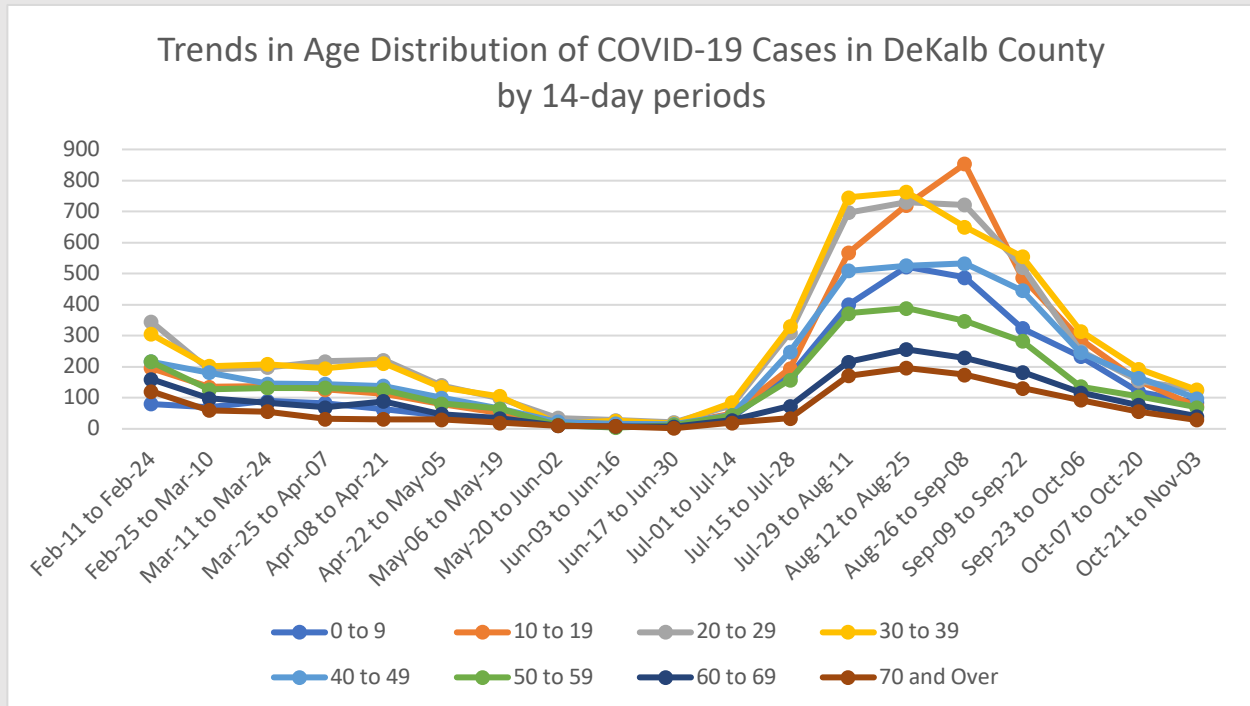


COVID-19 Cases by Race and Ethnicity, DeKalb County



*"Other" includes Native Hawaiian/Pacific Islander and American Indian/Native American

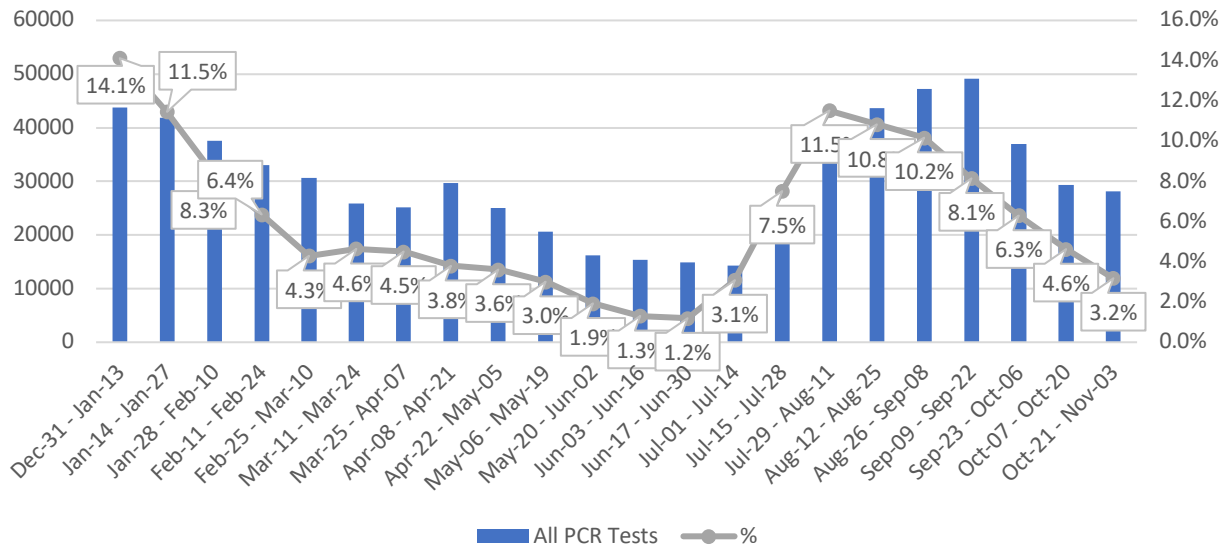
Age Distribution of COVID Cases



*Counts shown reflect the number of confirmed cases as of 11/9/21 using the date of first positive sample collection. Where date of first positive sample collection were not available, the date of report creation in GA SENDSS was used instead. All data reported are preliminary and subject to change.

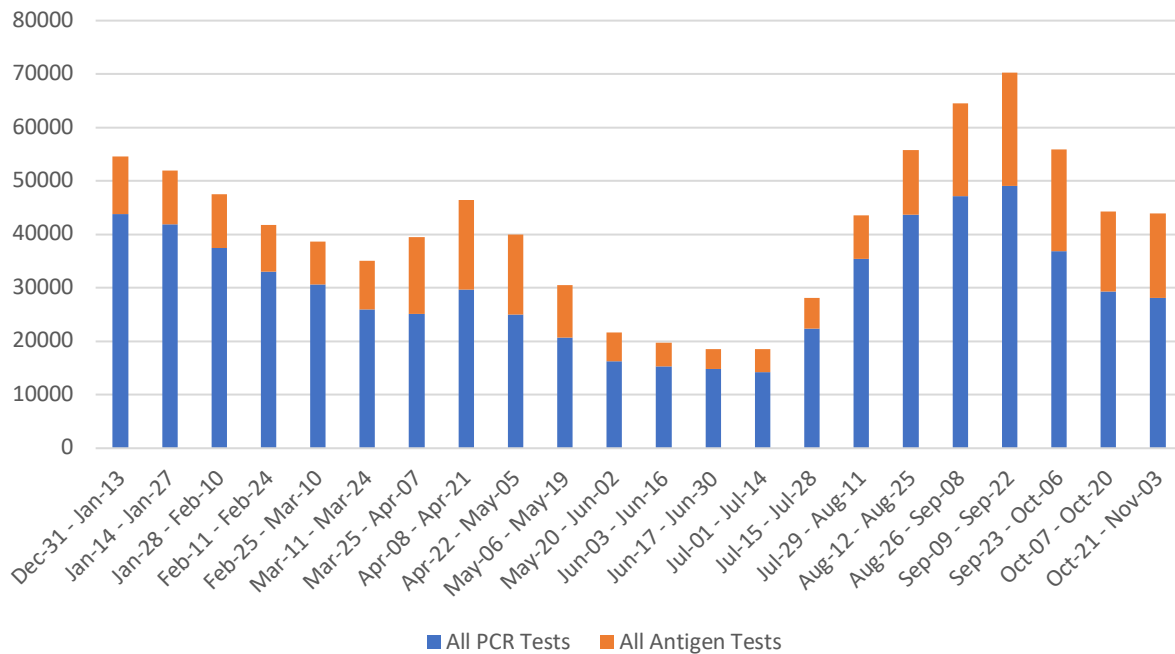
COVID-19 Testing and Positivity

Trends in positive COVID-19 PCR Tests in DeKalb County by 14-day Periods



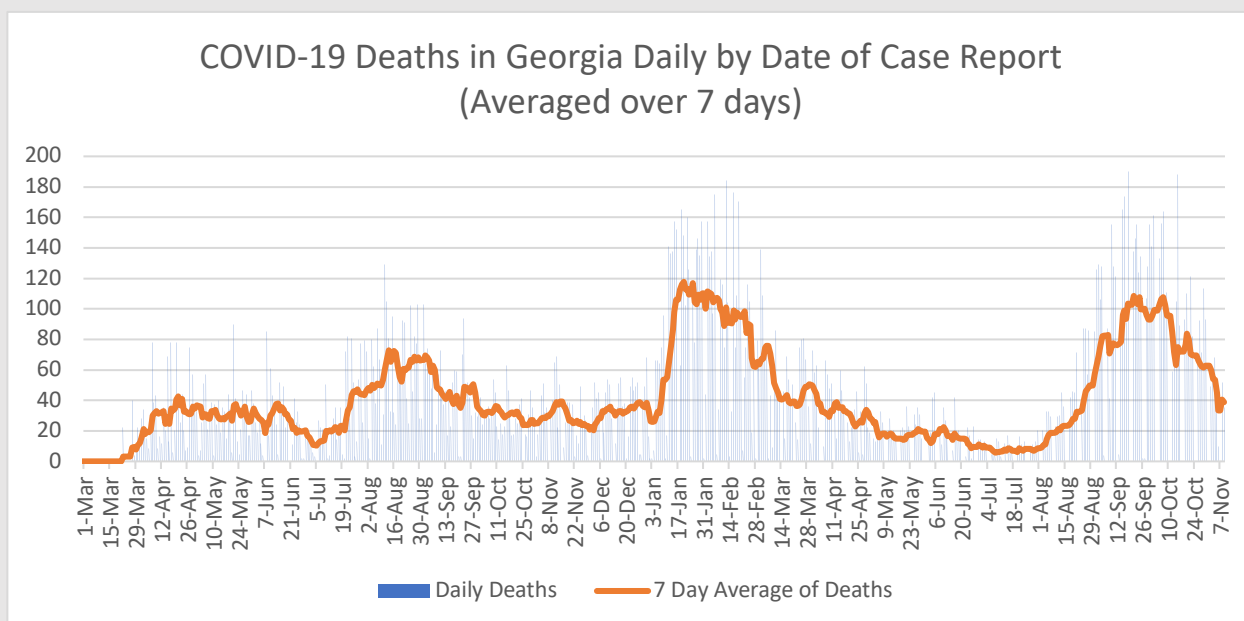
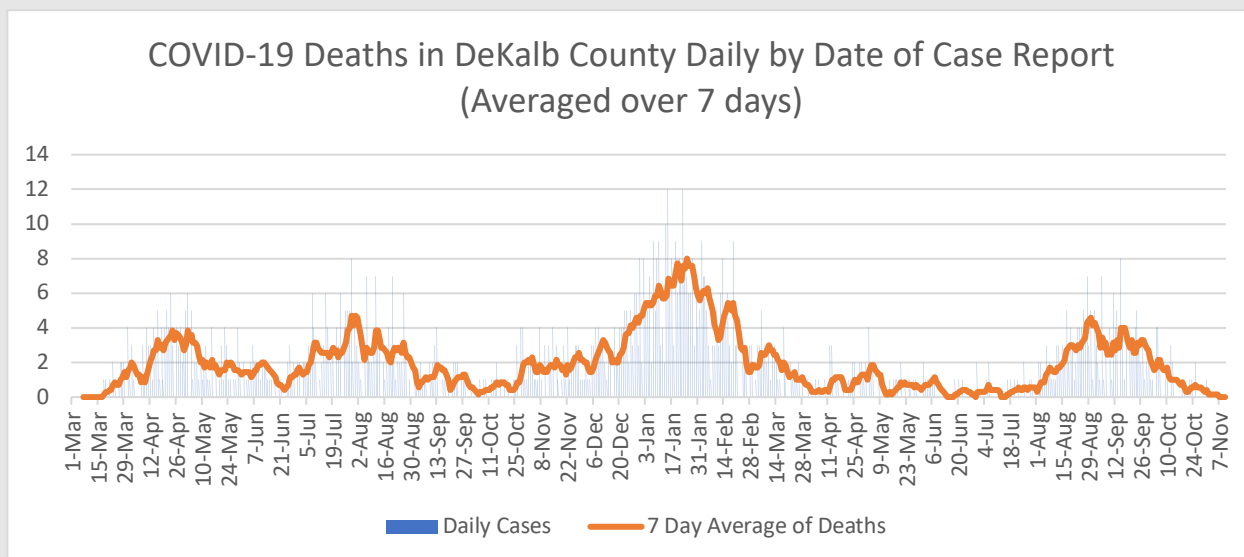
*Data as of 11/9/2021. Only data on Polymerase Chain Reaction (PCR) tests were included. All data reported are preliminary and subject to change

Total Testing in DeKalb County by 14-day Periods



*Data as of 11/9/2021. Negative antigen tests from pop-up sites are not always reported and at-home kits do not report any results, leading to an underreporting of antigen test counts. All data reported are preliminary and subject to change.

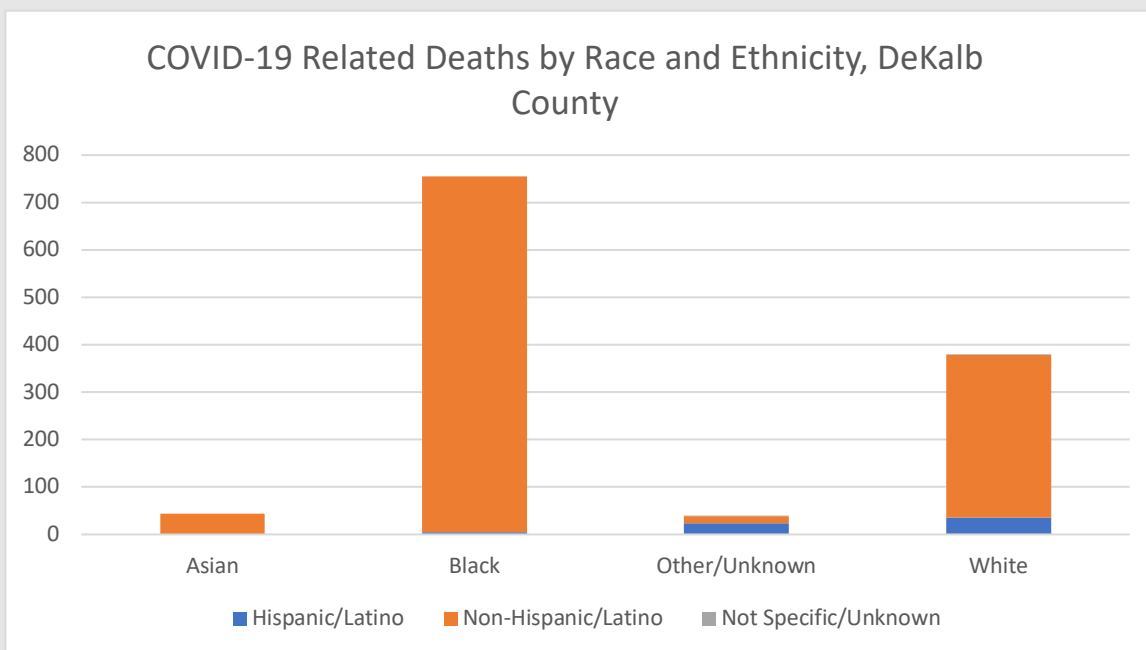
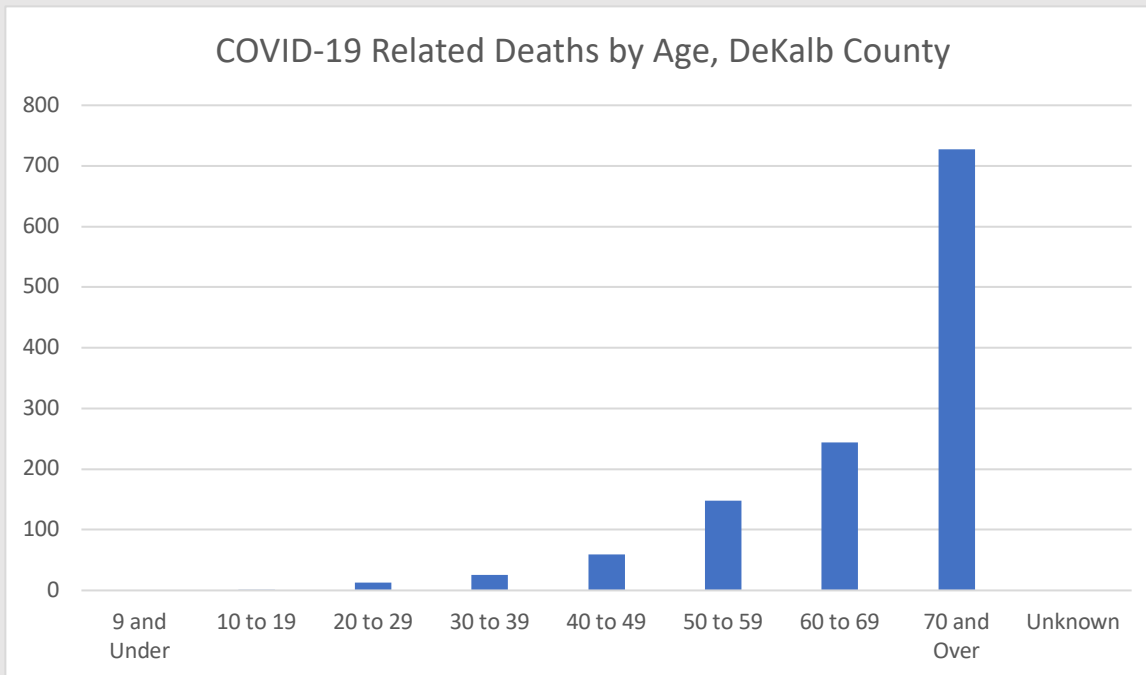
COVID-19 Related Deaths



*DeKalb County Data as of 11/9/2021. Georgia data as 11/9/2021. Date of case reported used. All data reported are preliminary and subject to change.

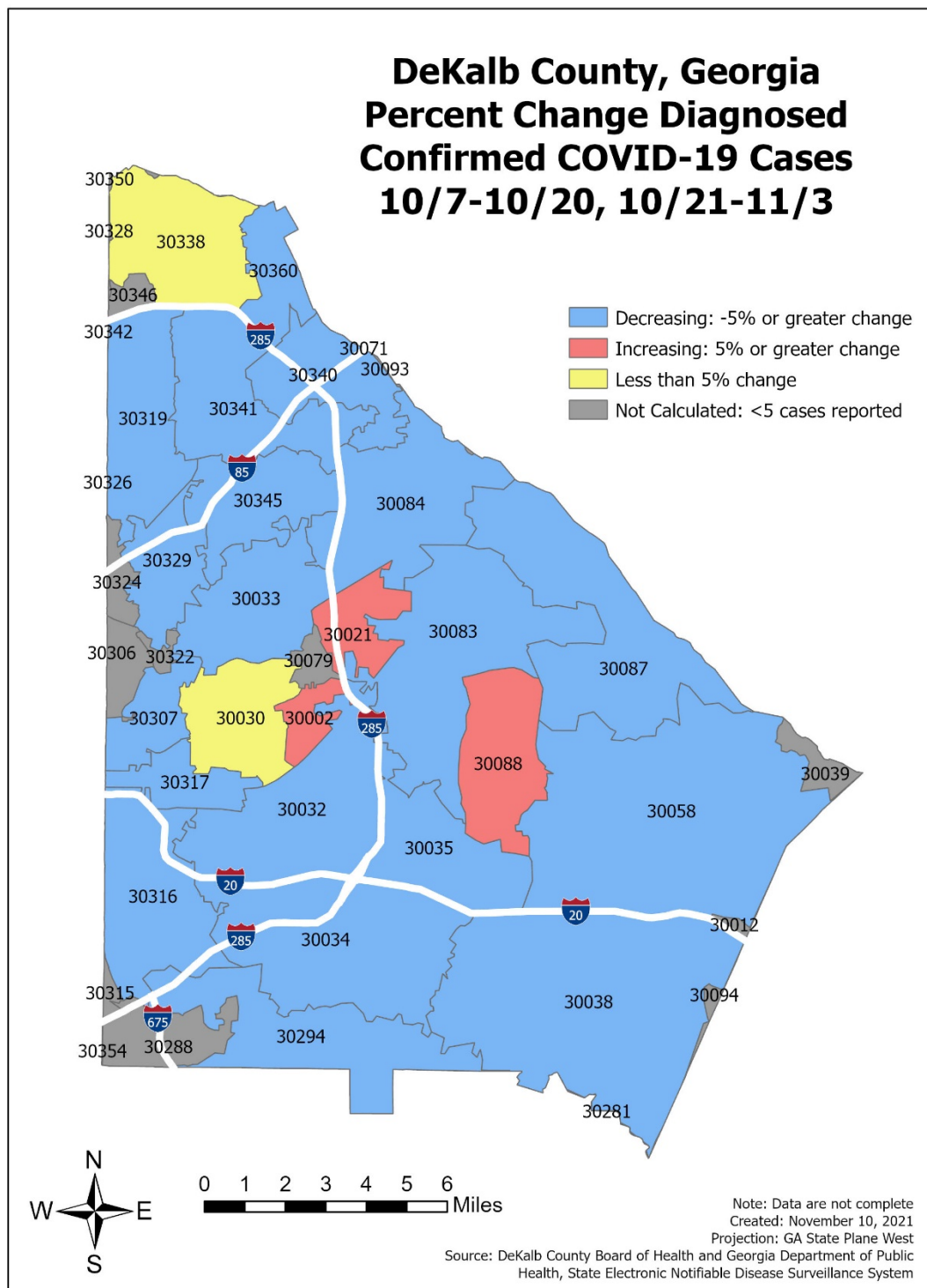
Total COVID-19 Related Hospitalizations/Deaths in DeKalb County, GA		Count	%
Hospitalization			
Needed Hospitalization		6369	7.9%
Not Known to Have Been Hospitalized		74049	92.1%
Deaths			
Died		1218	1.5%

COVID-19 Related Death Demographics



*"Other" includes Native Hawaiian/Pacific Islander and American Indian/Native American

Map of Change in COVID-19 Cases by Zip Code



*Note: Please see table below for more details on COVID-19 cases reported by zip code.

Table of COVID-19 Cases by Zip Code

Zip	Previous 11/2	Current 11/7	Percent of Total	Previous 14 Days 10/7-10/20	Recent 14 Days 10/21-11/3	Percent Change in 14-day periods
All DeKalb	80282	80418	100.0%	1030	648	-37.1%
30058	6767	6781	8.4%	93	61	-34.4%
30083	5916	5923	7.4%	73	33	-54.8%
30034	5565	5572	6.9%	61	37	-39.3%
30032	5141	5150	6.4%	77	35	-54.5%
30038	4862	4870	6.1%	58	32	-44.8%
30319	4107	4112	5.1%	42	24	-42.9%
30341	3613	3620	4.5%	47	37	-21.3%
30084	3253	3254	4.0%	32	15	-53.1%
30329	3241	3243	4.0%	48	26	-45.8%
30338	3155	3168	3.9%	36	35	-2.8%
30340	2930	2933	3.6%	37	18	-51.4%
30088	2883	2888	3.6%	26	29	11.5%
30087	2767	2775	3.5%	28	19	-32.1%
30033	2564	2569	3.2%	34	26	-23.5%
30035	2467	2471	3.1%	40	18	-55.0%
30021	2361	2363	2.9%	17	21	23.5%
30316	2354	2356	2.9%	30	27	-10.0%
30294	2290	2294	2.9%	25	19	-24.0%
30345	2227	2232	2.8%	37	27	-27.0%
30030	2053	2064	2.6%	31	30	-3.2%
30360	1471	1473	1.8%	43	9	-79.1%
30317	1234	1235	1.5%	25	12	-52.0%
30307	854	855	1.1%	11	6	-45.5%
30346	660	662	0.8%	<5	<5	NA
30306	620	621	0.8%	<5	<5	NA
30322	446	447	0.6%	<5	5	NA
30324	437	438	0.5%	<5	<5	NA
30002	427	427	0.5%	7	9	28.6%
30350	407	407	0.5%	<5	<5	NA
30288	379	379	0.5%	<5	6	NA
30079	364	365	0.5%	12	<5	NA
30328	95	95	0.1%	<5	<5	NA
30039	87	87	0.1%	<5	<5	NA
30072	58	59	0.1%	<5	<5	NA
30094	52	53	0.1%	<5	<5	NA
30012	39	39	0.0%	<5	<5	NA
30315	20	20	0.0%	<5	<5	NA
Unknown	2116	2118	2.6%	10	43	330.0%

*To account for reporting lag of new diagnoses, the 14-day periods were calculated from a week prior. Data cleaning may lead to reassignment of cases from one territory to another based on corrected addresses which may appear as “decreases” when compared to previous counts. Zip codes with fewer than 5 cases reported were omitted from the table. “Unknown” includes Dekalb residents without a zip code or with an incorrectly entered zip code.

Vaccination Overview

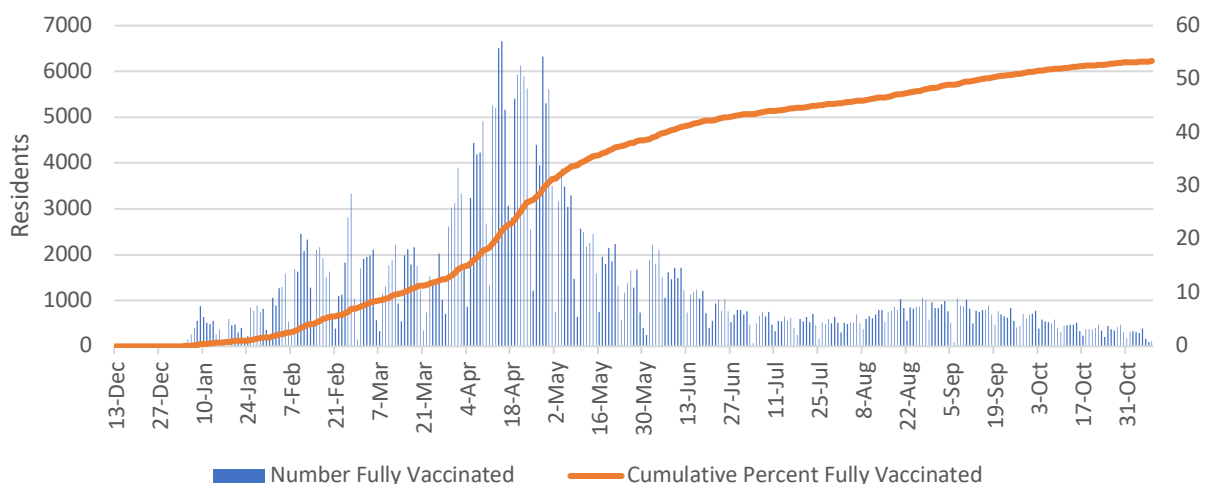
897,723 total
doses
administered

59.8% of
residents with at
least one dose

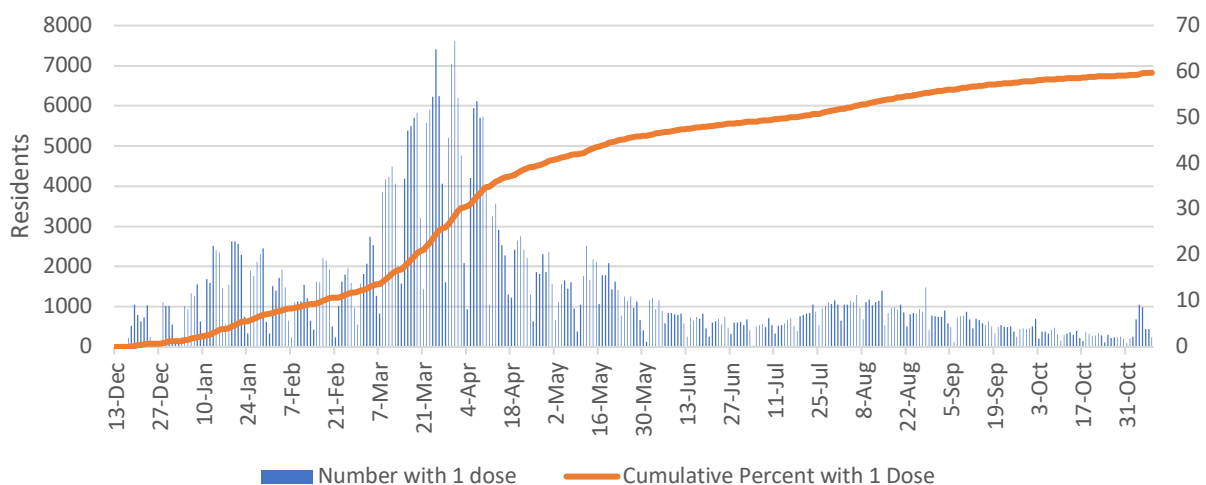
53.4% of
residents fully
vaccinated

10,450 doses
administered since
last report

Fully Vaccinated Dekalb County Residents



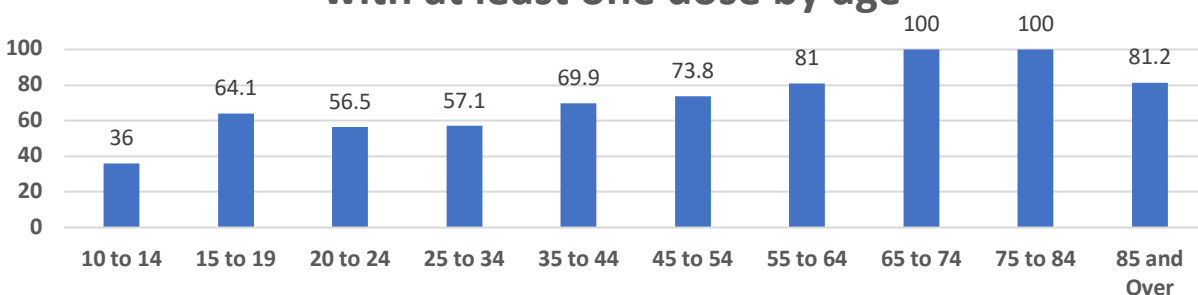
DeKalb County Residents with At Least 1 Dose



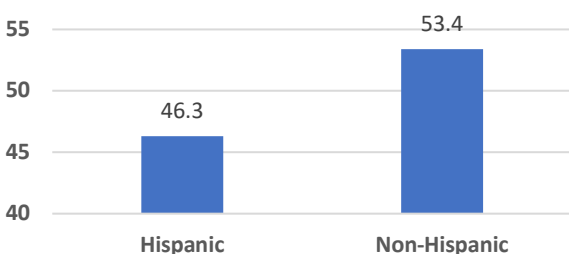
*Counts shown reflect the number of vaccinated residents as of 11/9/21 using the date of administration. A completed vaccination course refers to an individual receiving two doses of a two-dose series, or one dose of a one-dose series. Individuals are considered fully vaccinated 14 days after their final dose. **Note: All data reported are preliminary and subject to change. Delays in data reporting may cause changes in data counts, particularly within the last week.

Vaccination Demographics

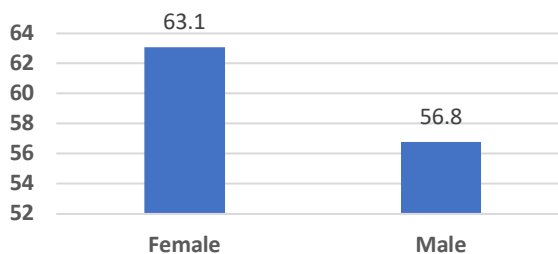
Percent of residents (within that demographic)
with at least one dose by age



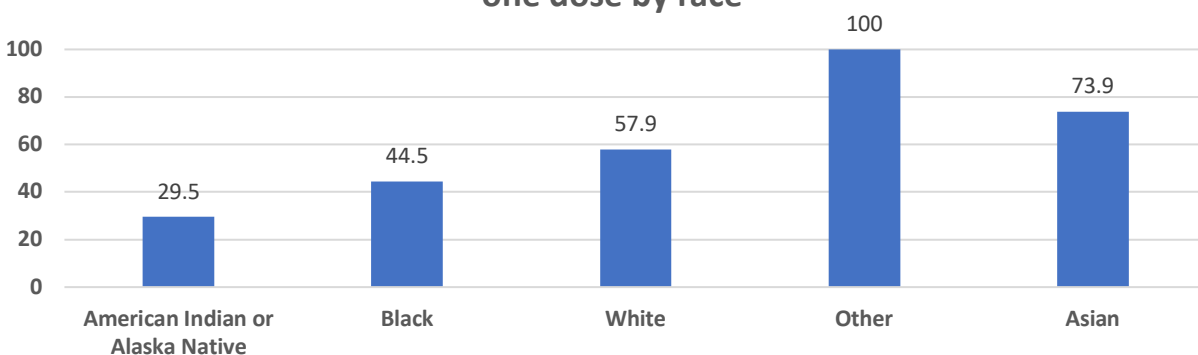
Percent of residents
(within that demographic)
with at least one dose by
ethnicity



Percent of residents
(within that demographic)
with at least one dose by
gender

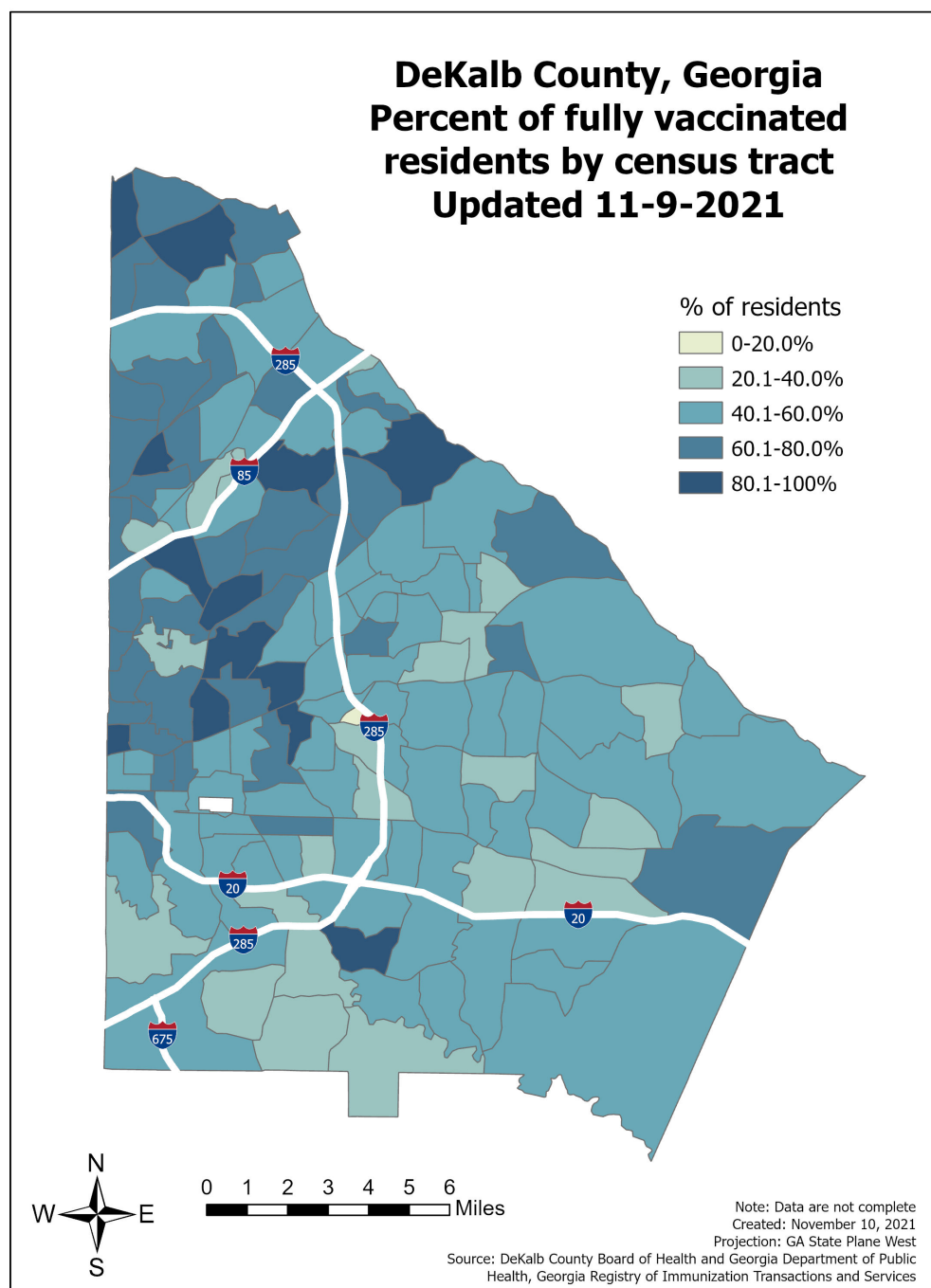


Percent of residents (within that demographic) with at least
one dose by race



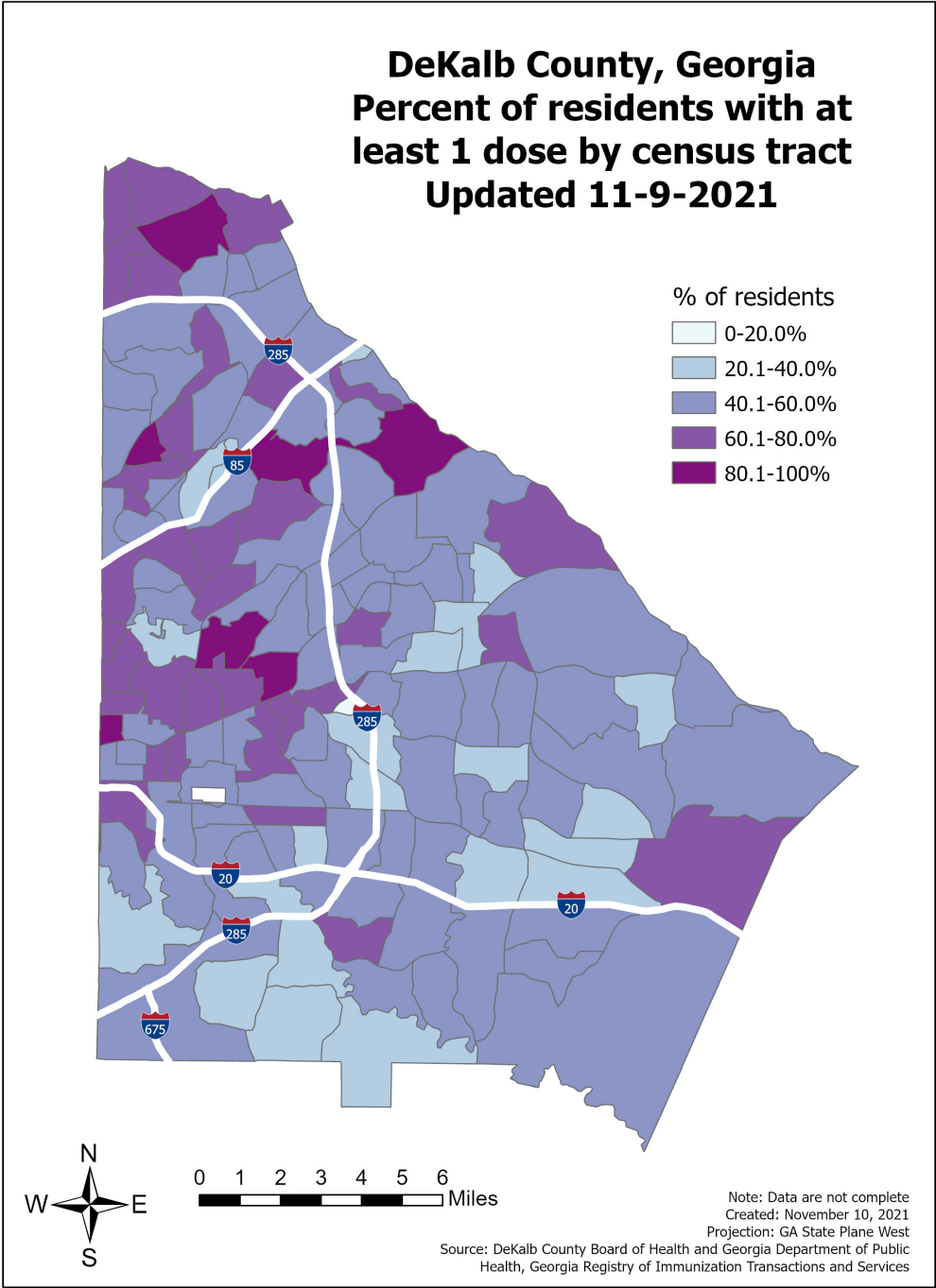
*Counts shown reflect the number of vaccinated residents as of 11/9/21 using the date of administration of the first dose. These graphs do not include: 798 individuals (0.2%) with unknown gender, 21,319 individuals (4.8%) with unknown race, and 55,373 individuals (12.4%) with unknown ethnicity. The age group 10-14 has a lower percentage in part due to vaccination not being available to children under the age of 12 until recently. **Note: All data reported are preliminary and subject to change. Delays in data reporting may cause changes in data counts, particularly within the last week.

Map by Fully Vaccinated



*Note: An individual is considered fully vaccinated if it has been at least 14 days (2 weeks) since the completion of the COVID-19 vaccination series (two doses in a two-dose series OR one dose in a one-dose series). Data obtained from the Georgia Department of Public Health's COVID-19 vaccination dashboard, last updated on 11/9/2021

Map by Partially Vaccinated



*Note: Data obtained from the Georgia Department of Public Health’s COVID-19 vaccination dashboard, last updated on 11/9/2021