

## Overview

**82,430**  
Confirmed  
cases

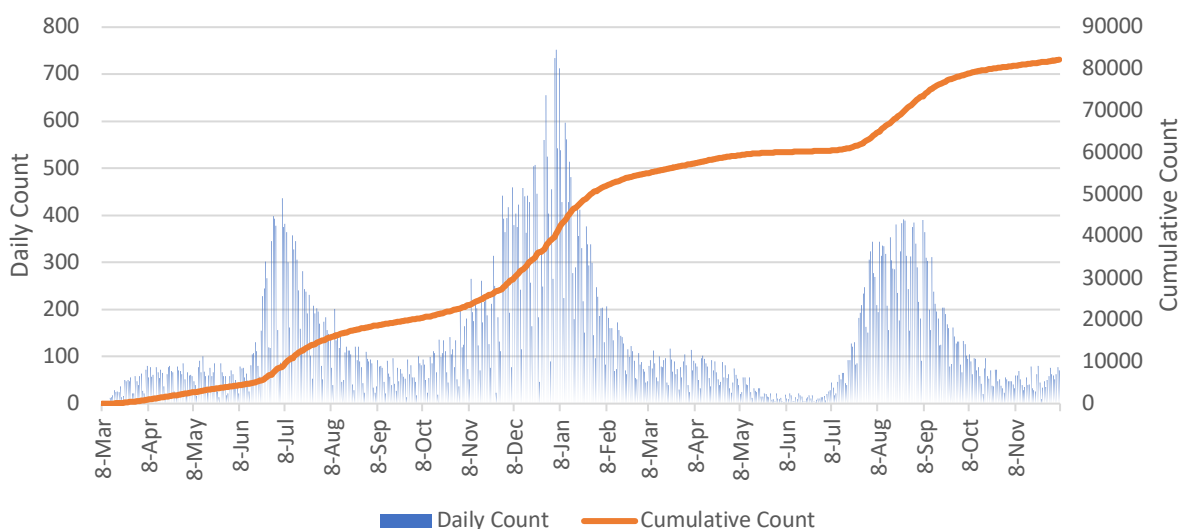
**6.4%** percent  
of Georgia cases  
are in Dekalb

**87** cases per 100K  
people in the last 7  
days

**6,604**  
hospitalizations

**1,257**  
deaths

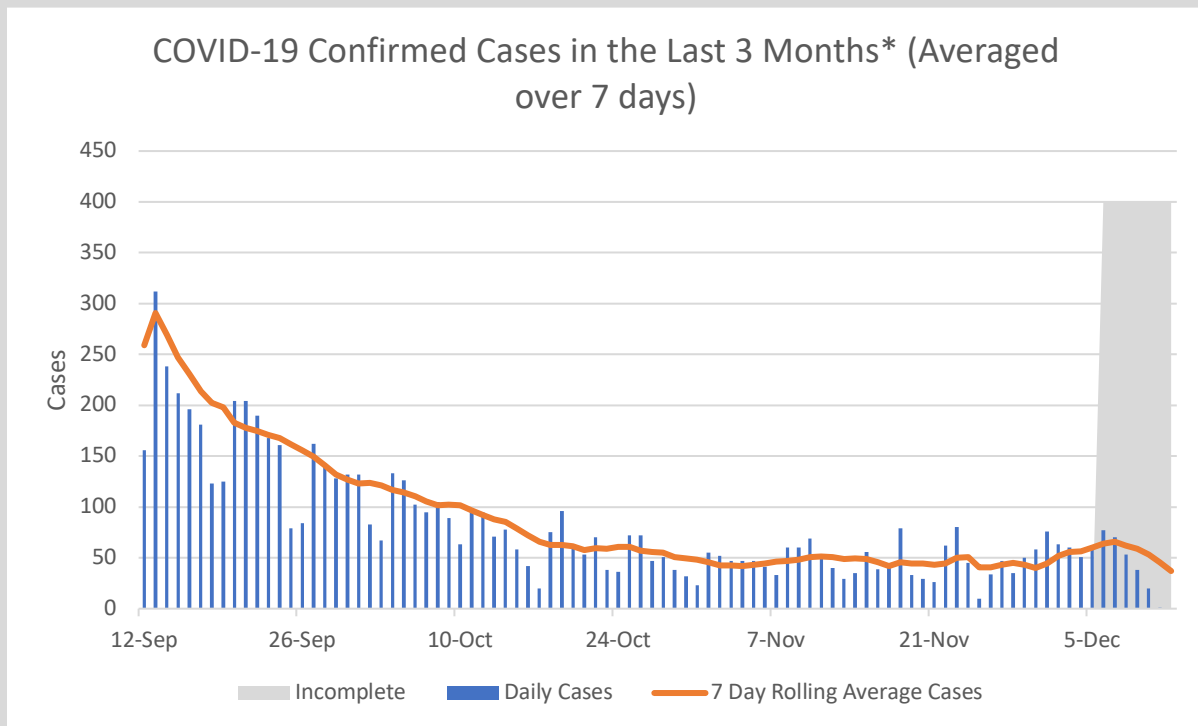
Daily and Cumulative COVID-19 Case Counts,  
DeKalb County\*



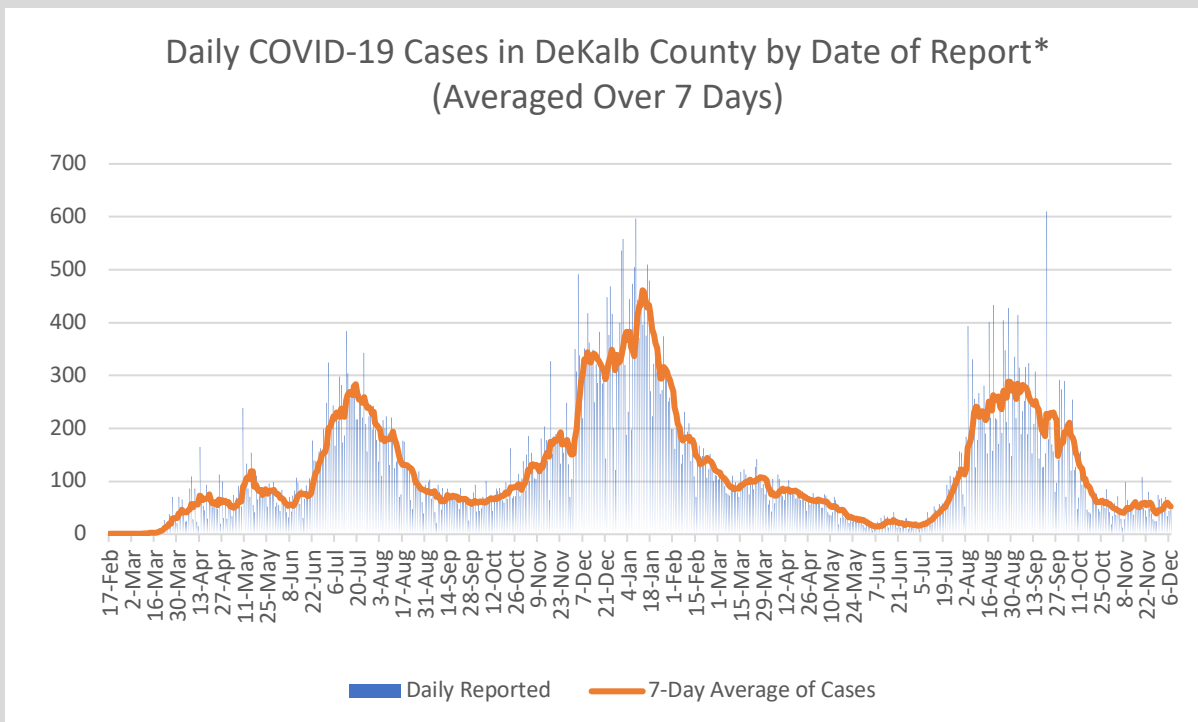
\*Counts shown reflect the number of confirmed cases as of 12/12/21 using the date of first positive sample collection. Where date of first positive sample collection were not available, the date of report creation in GA SENDSS was used instead. \*\*Note: All data reported are preliminary and subject to change. Delays in data reporting may cause changes in data counts, particularly within the last week.

- As of December 12, DeKalb County has reported 82,430 confirmed cases of 2019 novel coronavirus disease (COVID-19) and 1,257 confirmed COVID-19 deaths, an increase of 456 cases (+0.6%) and 5 deaths (+0.4%) since the last report on December 8.
- During the week of 12/5 to 12/11, there were 87 COVID-19 cases per 100,000 people in Dekalb, which is defined as “substantial” community transmission by the CDC
- 748 COVID-19 cases (94 cases per 100,000 population) were diagnosed in the most recent 14-day period (11/23–12/6), a **15.3% INCREASE** from the previous 14-days (11/9–11/22)
- Of all persons diagnosed with COVID-19 in DeKalb, 8.0% needed hospitalization and 1.5% died
- As of December 10, Georgia Department of Public Health reported that DeKalb accounted for 6.4% of the total number of COVID-19 cases in Georgia to date
- As of December 10, Georgia Department of Public Health reported that DeKalb has administered 969,625 vaccines, and has 454,147 residents with at least one dose (61%) and 408,315 fully vaccinated residents (54%)

## Other Case Count Metrics



\*Counts shown reflect the number of confirmed cases as of 12/12/21 using date of collection. All data reported are preliminary and subject to change. Positive cases from the last 7 days (gray area) are still being collected, and likely to increase.

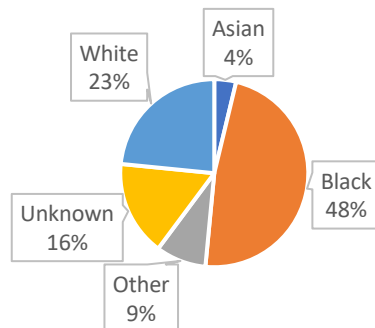


\*Counts shown reflect the number of confirmed cases as of 12/12/21 using date of report creating in GA SendSS. All data reported are preliminary and subject to change.

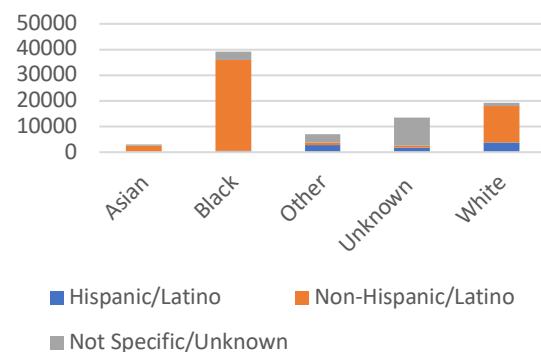
## Demographic Distribution of COVID Cases

Demographics		
Gender	N	%
Female	44902	54.5%
Male	36804	44.6%
Unknown	724	0.9%
Age		
9 and Under	5100	6.2%
10 to 19	9041	11.0%
20 to 29	16312	19.8%
30 to 39	16257	19.7%
40 to 49	12638	15.3%
50 to 59	10743	13.0%
60 to 69	6807	8.3%
70 and Over	5376	6.5%
Unknown	156	0.2%
Race		
Asian	3105	3.8%
Black	39484	47.9%
Other	7132	8.7%
Unknown	13392	16.2%
White	19317	23.4%
Ethnicity		
Hispanic/Latino	8733	10.6%
Non-Hispanic/Latino	54187	65.7%
Not Specific/Unknown	19510	23.7%

COVID-19 Cases by Race, DeKalb County

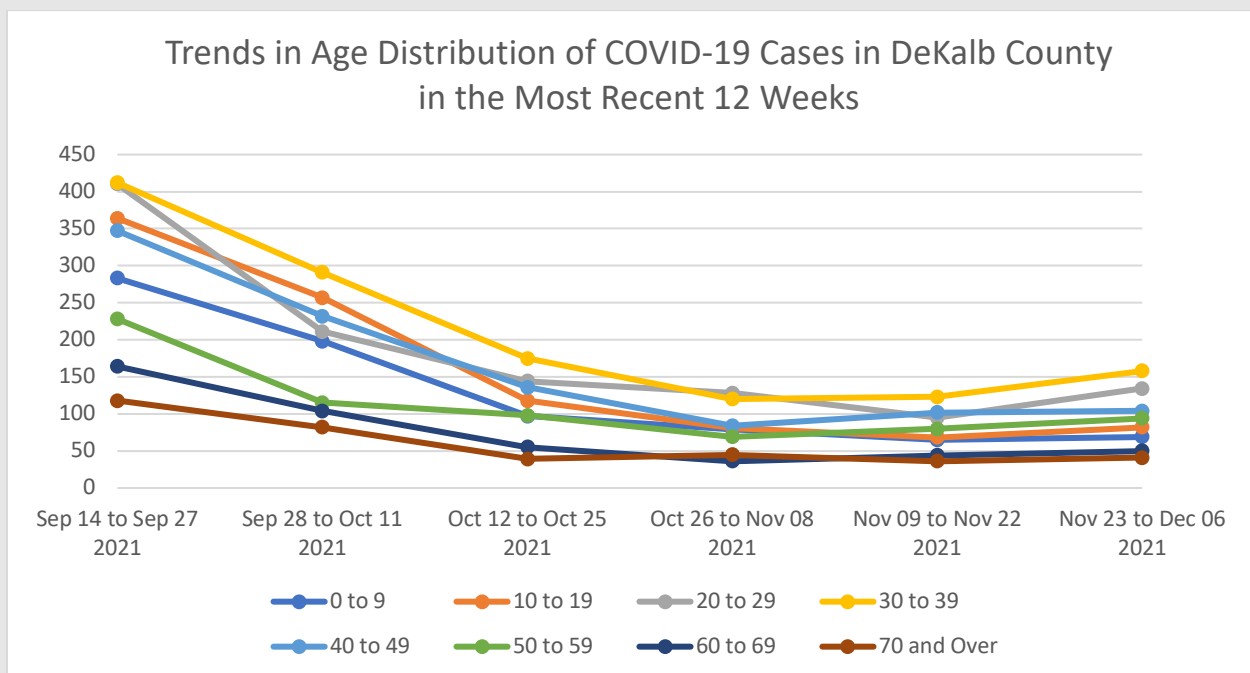
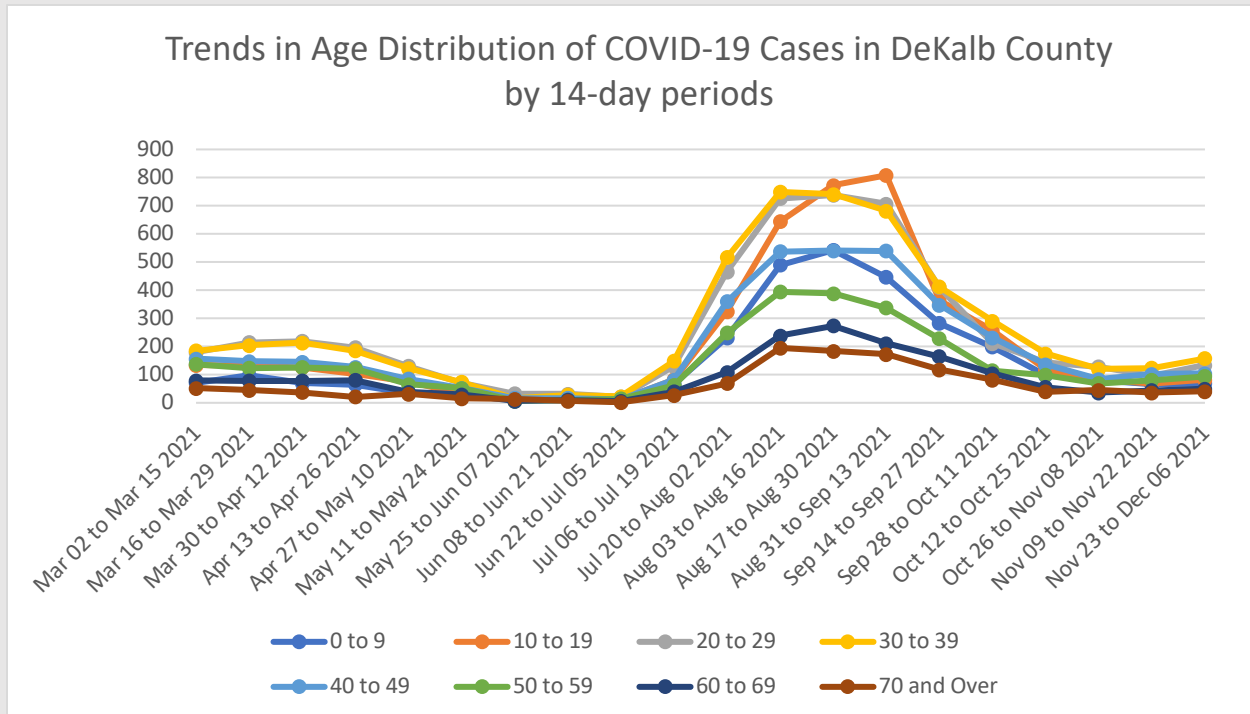


COVID-19 Cases by Race and Ethnicity, DeKalb County



\*"Other" includes Native Hawaiian/Pacific Islander and American Indian/Native American

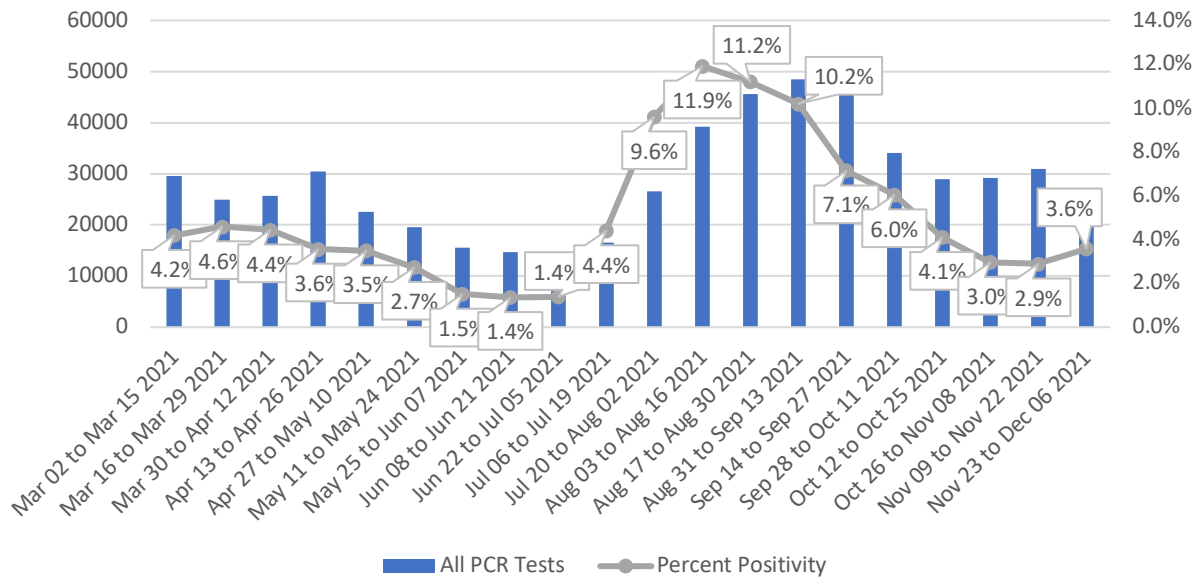
## Age Distribution of COVID Cases



\*Counts shown reflect the number of confirmed cases as of 12/12/21 using the date of first positive sample collection. Where date of first positive sample collection were not available, the date of report creation in GA SENDSS was used instead. All data reported are preliminary and subject to change.

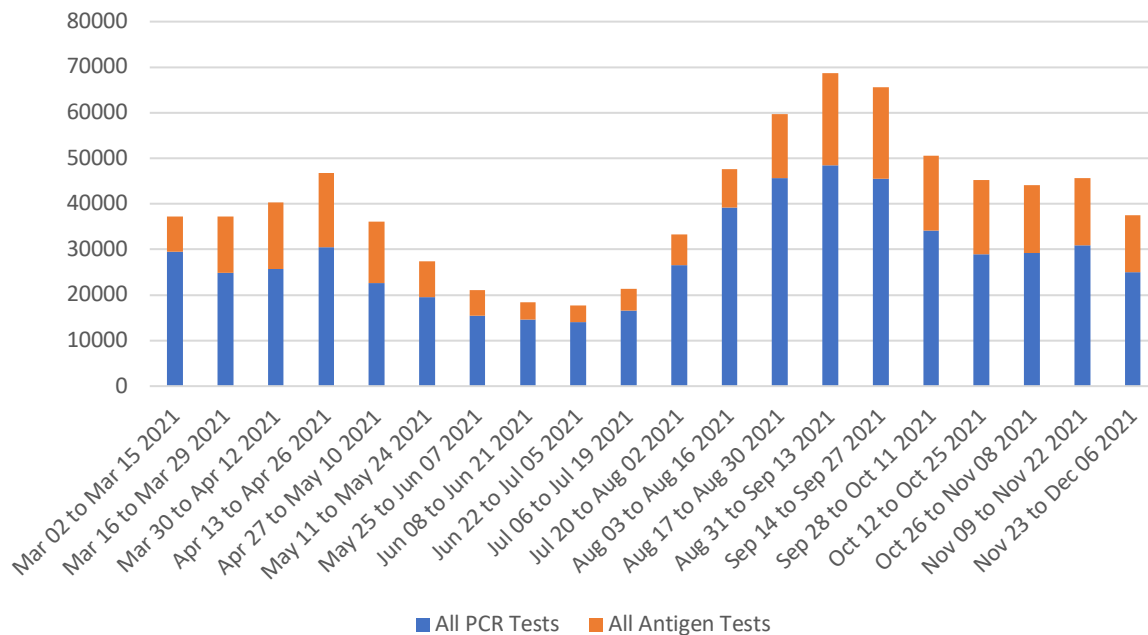
## COVID-19 Testing and Positivity

### Trends in positive COVID-19 PCR Tests in DeKalb County by 14-day Periods



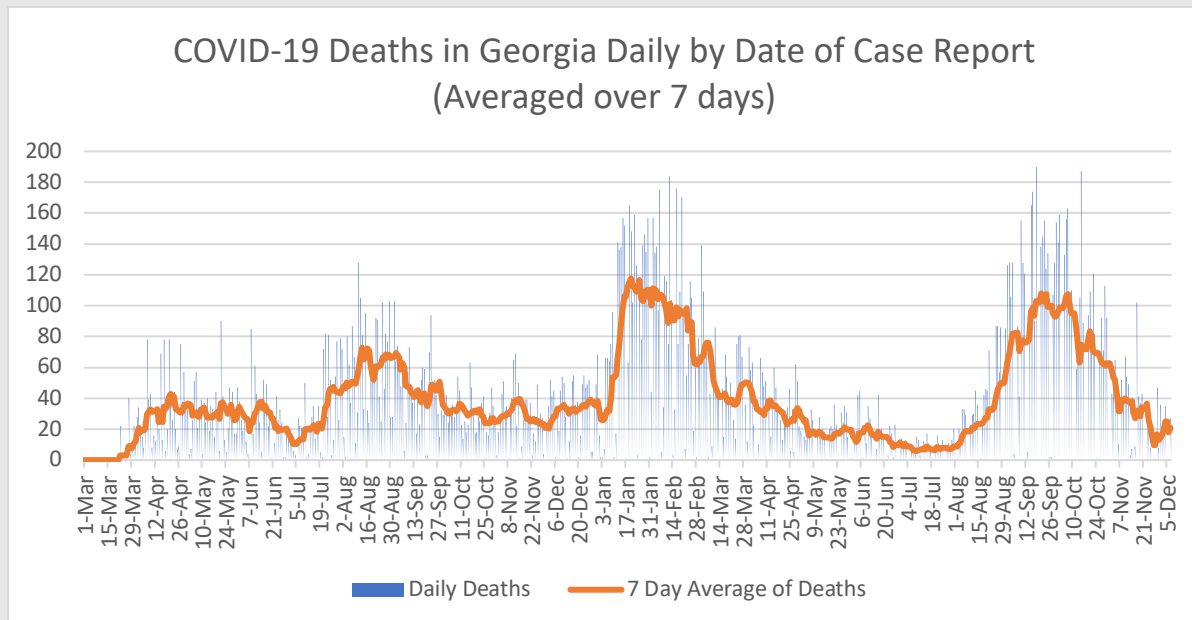
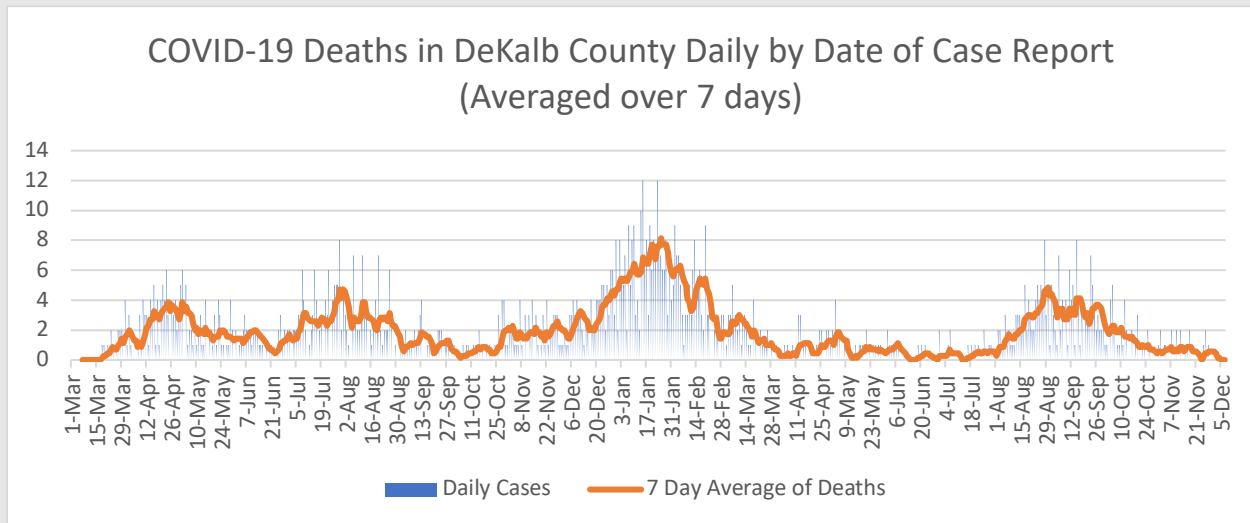
\*Data as of 12/10/2021. Only data on Polymerase Chain Reaction (PCR) tests were included. All data reported are preliminary and subject to change

### Total Testing in DeKalb County by 14-day Periods



\*Data as of 12/10/2021. Negative antigen tests from pop-up sites are not always reported and at-home kits do not report any results, leading to an underreporting of antigen test counts. All data reported are preliminary and subject to change.

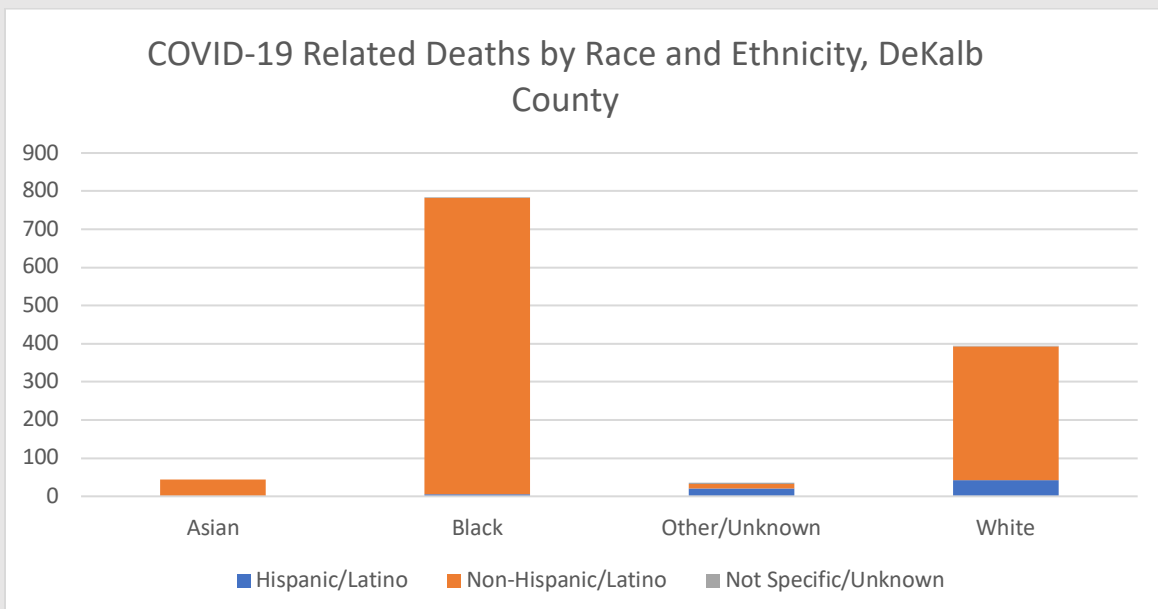
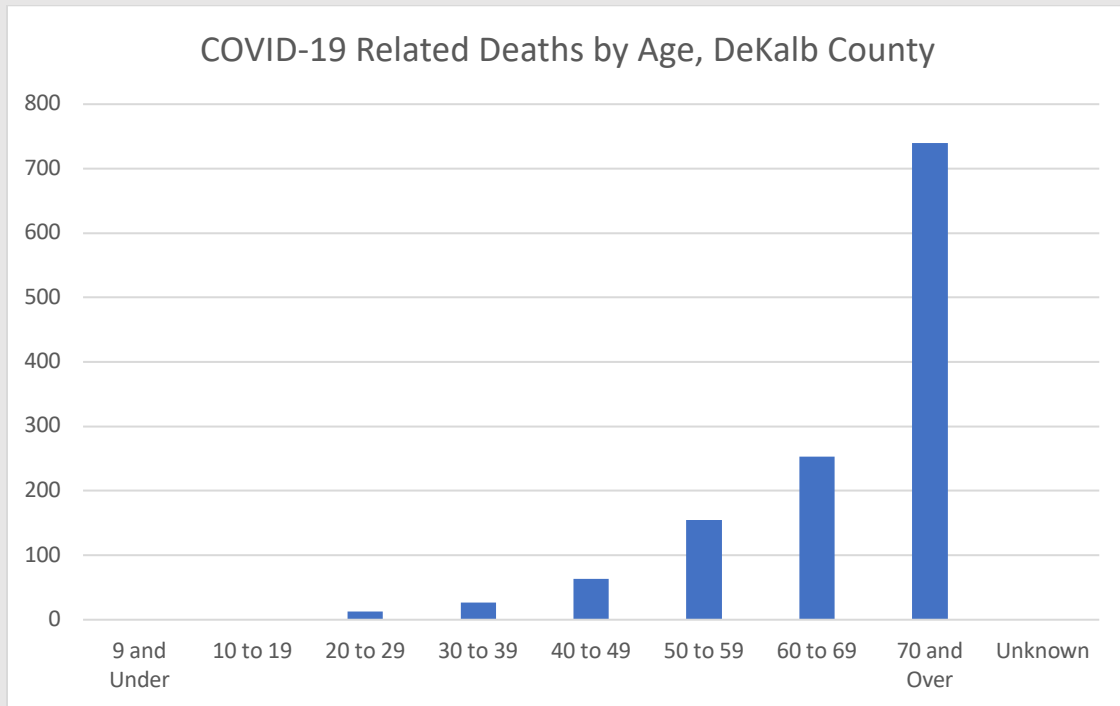
## COVID-19 Related Deaths



\*DeKalb County Data as of 12/12/2021. Georgia data as 12/10/2021. Date of case reported used. All data reported are preliminary and subject to change.

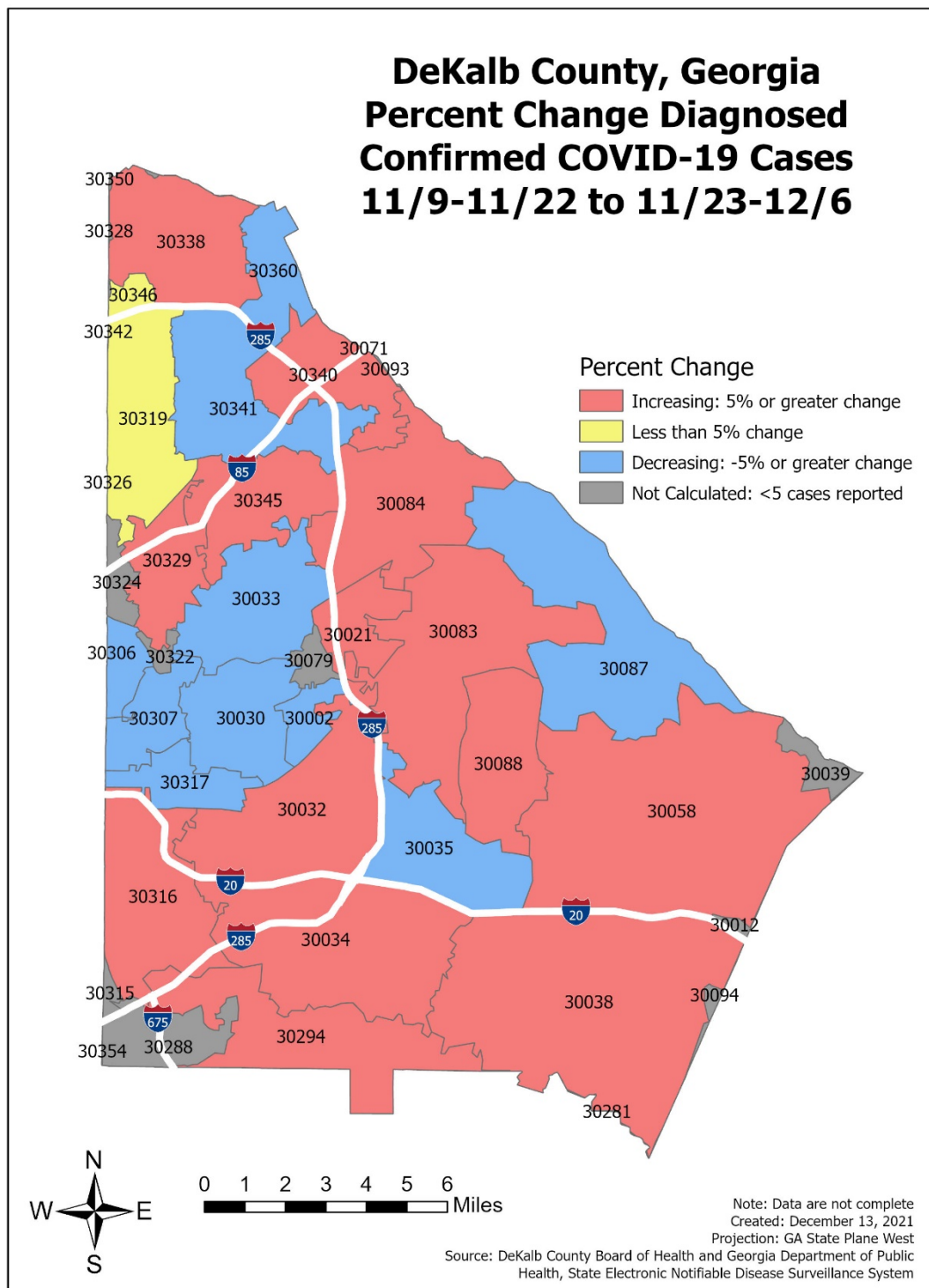
Total COVID-19 Related Hospitalizations/Deaths in DeKalb County, GA		Count	%
<b>Hospitalization</b>			
Needed Hospitalization		6604	8.0%
Not Known to Have Been Hospitalized		75826	92.0%
<b>Deaths</b>			
Died		1257	1.5%

## COVID-19 Related Death Demographics



\*"Other" includes Native Hawaiian/Pacific Islander and American Indian/Native American

## Map of Change in COVID-19 Cases by Zip Code



\*Note: Please see table below for more details on COVID-19 cases reported by zip code.



## Table of COVID-19 Cases by Zip Code

Zip	Previous 12/7	Current 12/12	Percent of Total	Previous 14 Days 11/9-11/22	Recent 14 Days 11/23-12/6	Percent Change in 14-day periods
<b>All DeKalb</b>	81974	82430	100.0%	649	748	15.3%
<b>30058</b>	6921	6960	8.4%	54	65	20.4%
<b>30083</b>	6012	6041	7.3%	31	50	61.3%
<b>30034</b>	5644	5674	6.9%	21	33	57.1%
<b>30032</b>	5226	5258	6.4%	35	47	34.3%
<b>30038</b>	4974	5010	6.1%	33	53	60.6%
<b>30319</b>	4226	4250	5.2%	56	54	-3.6%
<b>30341</b>	3712	3729	4.5%	56	23	-58.9%
<b>30084</b>	3311	3327	4.0%	22	28	27.3%
<b>30329</b>	3292	3311	4.0%	18	30	66.7%
<b>30338</b>	3247	3268	4.0%	32	40	25.0%
<b>30340</b>	2995	3006	3.6%	28	30	7.1%
<b>30088</b>	2935	2952	3.6%	17	22	29.4%
<b>30087</b>	2833	2845	3.5%	26	20	-23.1%
<b>30033</b>	2634	2649	3.2%	27	20	-25.9%
<b>30035</b>	2522	2529	3.1%	21	15	-28.6%
<b>30316</b>	2414	2439	3.0%	15	43	186.7%
<b>30021</b>	2386	2393	2.9%	6	16	166.7%
<b>30294</b>	2336	2345	2.8%	14	22	57.1%
<b>30345</b>	2281	2297	2.8%	18	28	55.6%
<b>30030</b>	2122	2134	2.6%	24	20	-16.7%
<b>30360</b>	1512	1518	1.8%	16	12	-25.0%
<b>30317</b>	1254	1262	1.5%	7	6	-14.3%
<b>30307</b>	885	891	1.1%	15	13	-13.3%
<b>30346</b>	679	687	0.8%	7	7	0.0%
<b>30306</b>	636	640	0.8%	9	6	-33.3%
<b>30322</b>	452	454	0.6%	<5	7	NA
<b>30002</b>	445	449	0.5%	13	6	-53.8%
<b>30324</b>	444	446	0.5%	<5	<5	NA
<b>30350</b>	410	411	0.5%	<5	<5	NA
<b>30288</b>	380	383	0.5%	<5	<5	NA
<b>30079</b>	370	375	0.5%	<5	5	NA
<b>30328</b>	97	97	0.1%	<5	<5	NA
<b>30039</b>	89	89	0.1%	<5	<5	NA
<b>30072</b>	61	61	0.1%	<5	<5	NA
<b>30094</b>	53	53	0.1%	<5	<5	NA
<b>30012</b>	40	41	0.0%	<5	<5	NA
<b>30315</b>	20	20	0.0%	<5	<5	NA
<b>Unknown</b>	2124	2136	2.6%	11	18	63.6%

\*To account for reporting lag of new diagnoses, the 14-day periods were calculated from a week prior. Data cleaning may lead to reassignment of cases from one territory to another based on corrected addresses which may appear as “decreases” when compared to previous counts. Zip codes with fewer than 5 cases reported were omitted from the table. “Unknown” includes Dekalb residents without a zip code or with an incorrectly entered zip code.

# Vaccination Overview

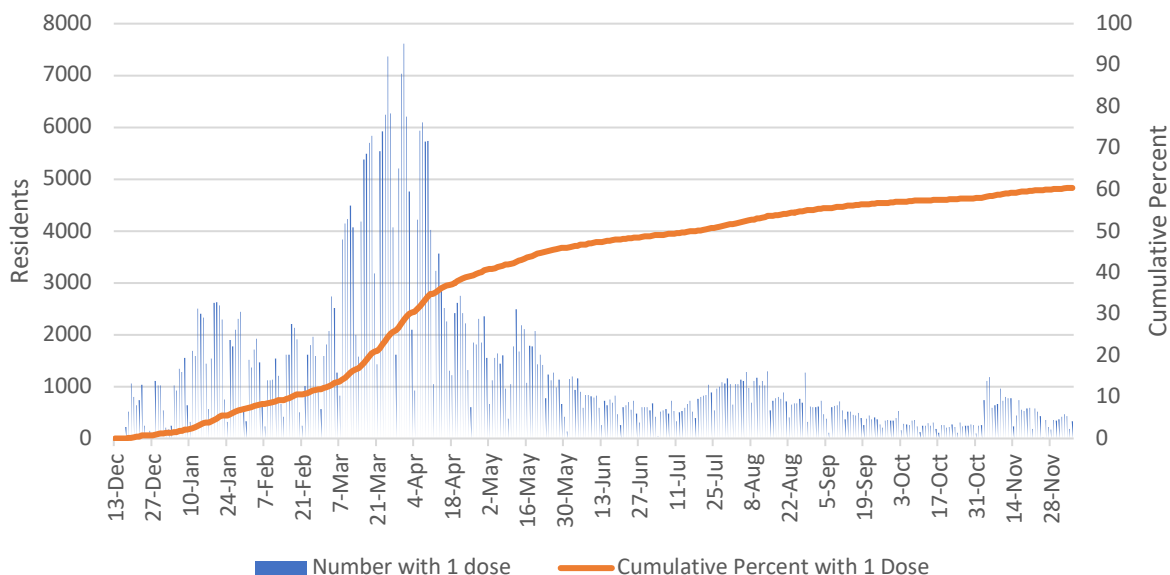
**969,625** total  
doses  
administered\*\*

**60.6%** of  
residents with at  
least one dose

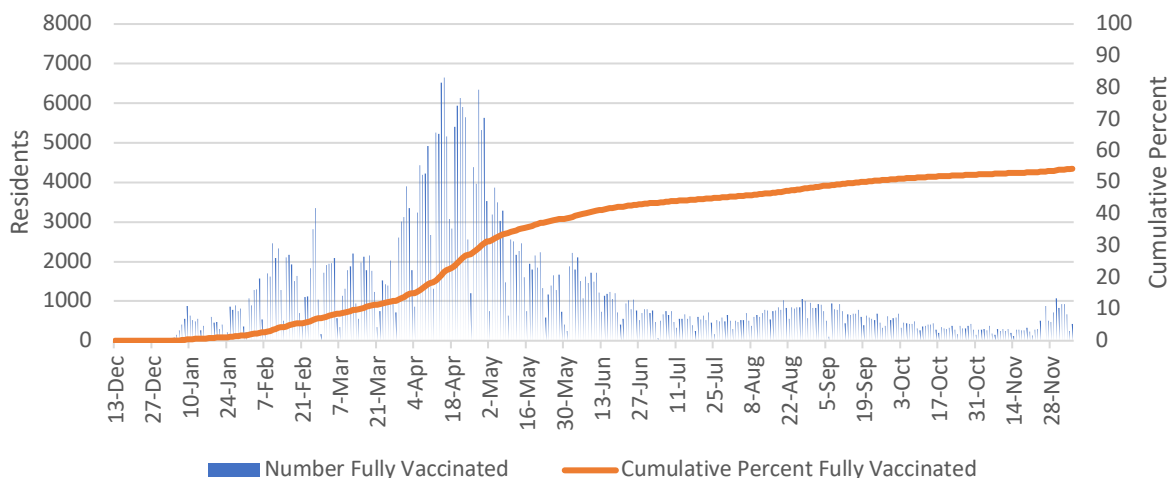
**54.5%** of  
residents fully  
vaccinated

**14%** residents  
have an additional  
dose\*\*\*

## DeKalb County Residents with At Least 1 Dose



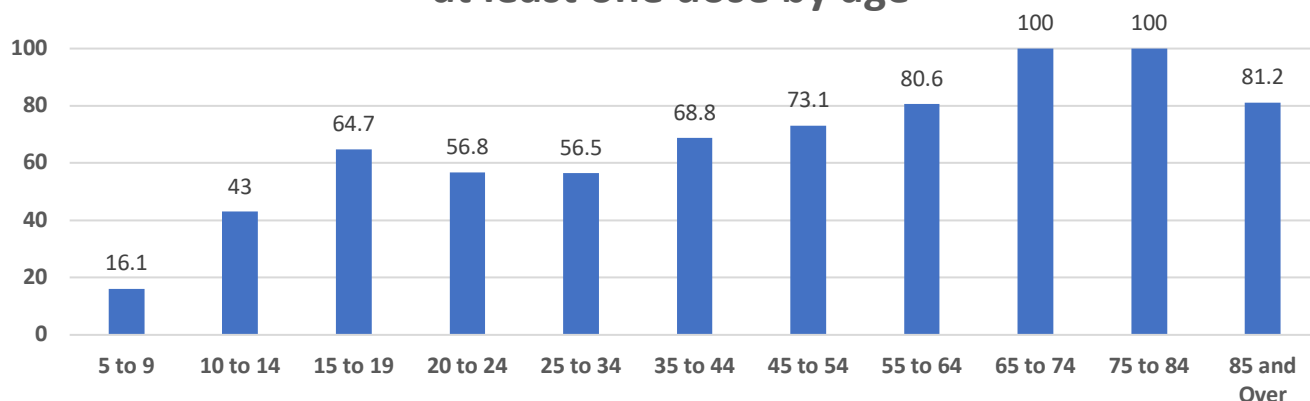
## Fully Vaccinated Dekalb County Residents



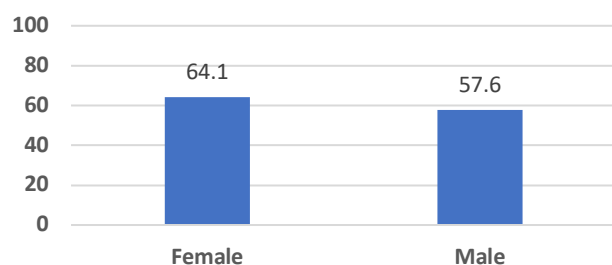
\*Counts shown reflect the number of vaccinated residents as of 12/10/21 using the date of administration. A completed vaccination course refers to an individual receiving two doses of a two-dose series, or one dose of a one-dose series. Individuals are considered fully vaccinated 14 days after their final dose. \*\*Note: All data reported are preliminary and subject to change. Delays in data reporting may cause changes in data counts. \*\*\*Note: Additional dose includes booster doses and third doses for immunocompromised persons

# Vaccination Demographics

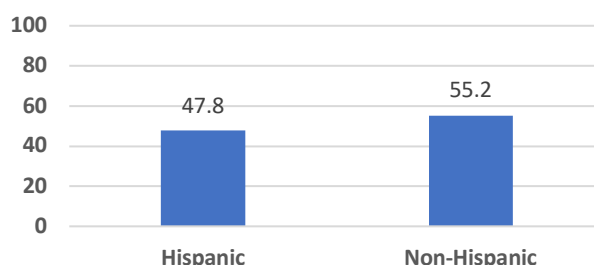
Percent of residents (within that demographic) with at least one dose by age



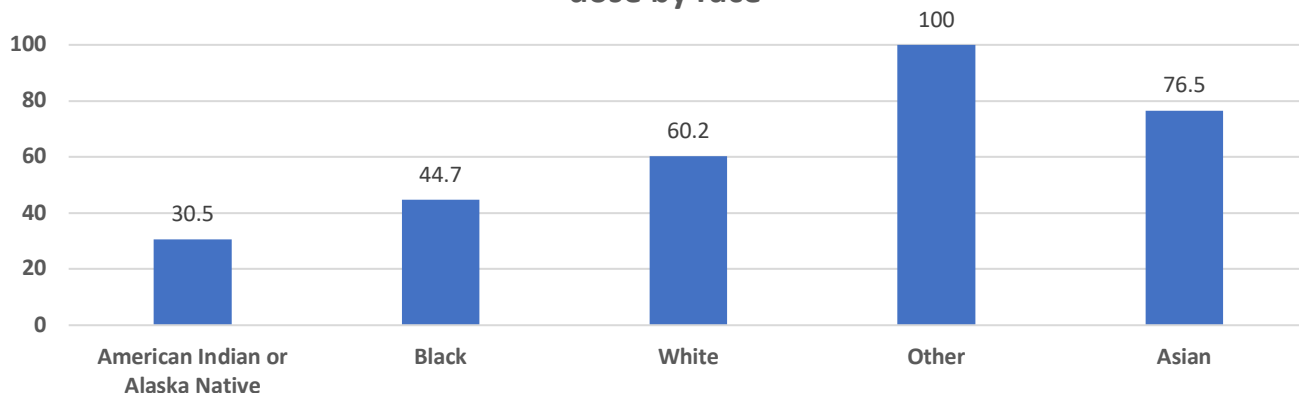
Percent of residents (within that demographic) with at least one dose by gender



Percent of residents (within that demographic) with at least one dose by ethnicity

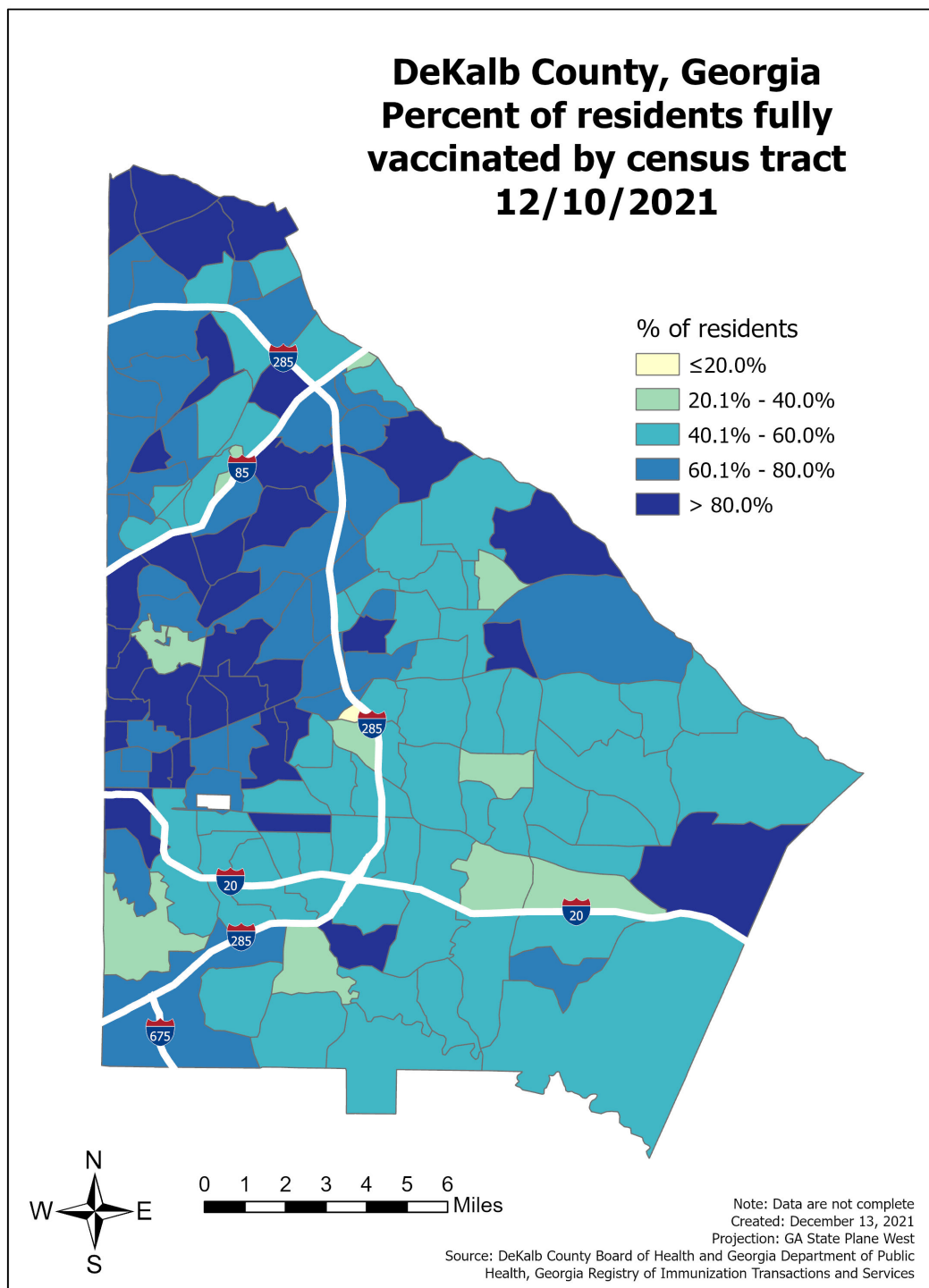


Percent of residents (within that demographic) with at least one dose by race



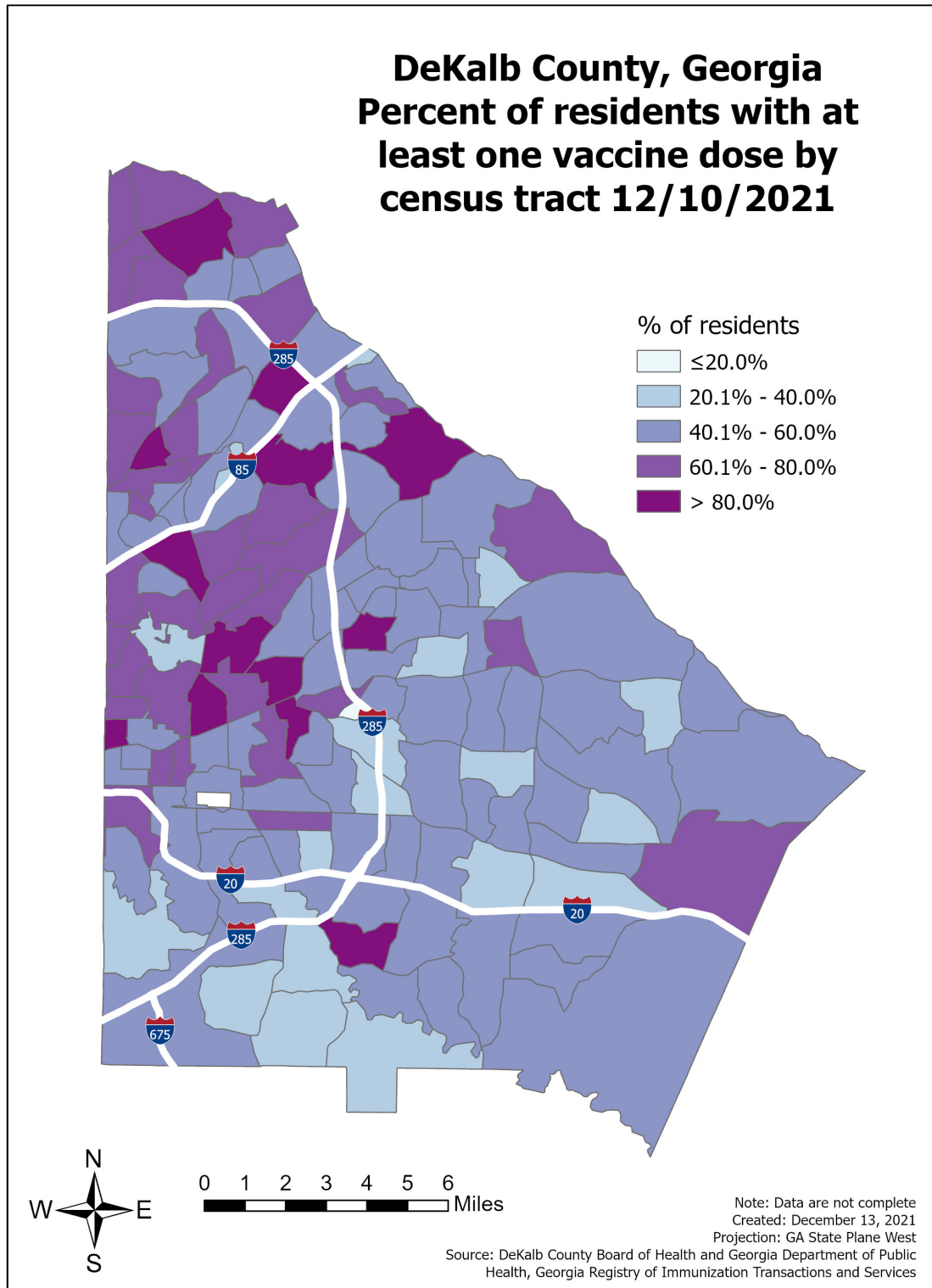
\*Counts shown reflect the number of residents with at least one dose of a COVID-19 vaccine as of 12/10/21. These graphs do not include: 723 individuals (0.2%) with unknown gender, 19,990 individuals (4.4%) with unknown race, and 48,404 individuals (10.7%) with unknown ethnicity. All age groups containing children under 12 have a lower percentage in part due to vaccination not being available to children under the age of 12 until recently. \*\*Note: All data reported are preliminary and subject to change. Delays in data reporting may cause changes in data counts.

## Map by Fully Vaccinated



\*Note: An individual is considered fully vaccinated if it has been at least 14 days (2 weeks) since the completion of the COVID-19 vaccination series (two doses in a two-dose series OR one dose in a one-dose series). Data obtained from the Georgia Department of Public Health's COVID-19 vaccination dashboard, last updated on 12/10/2021

## Map by Partially Vaccinated



\*Note: Data obtained from the Georgia Department of Public Health's COVID-19 vaccination dashboard, last updated on 12/10/2021