

Overview

97,881
Confirmed
cases

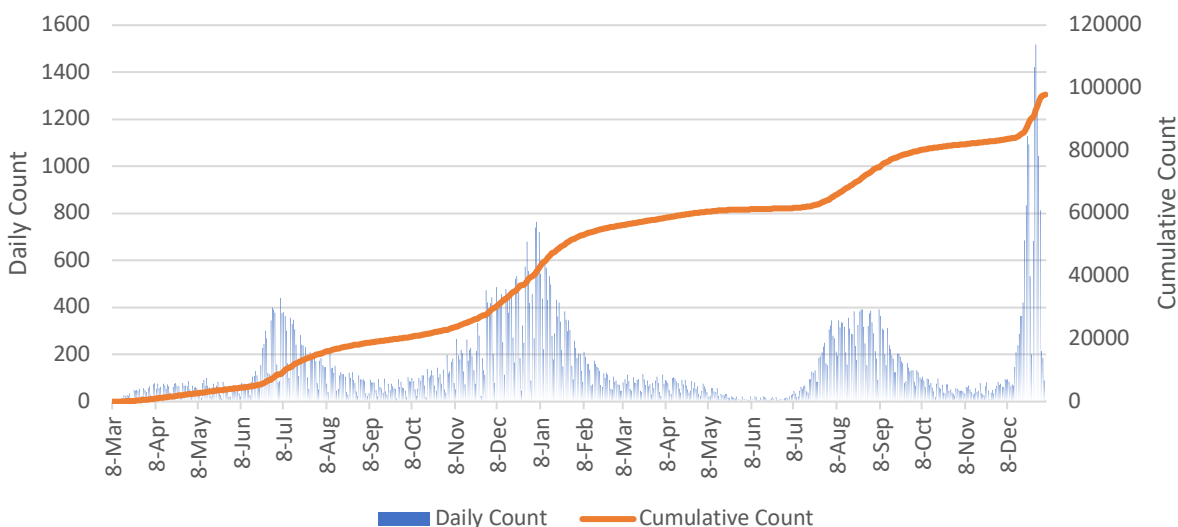
6.6% percent
of Georgia cases
are in Dekalb

1,054 cases per
100K people in the
last 7 days

7,043
hospitalizations

1,276
deaths

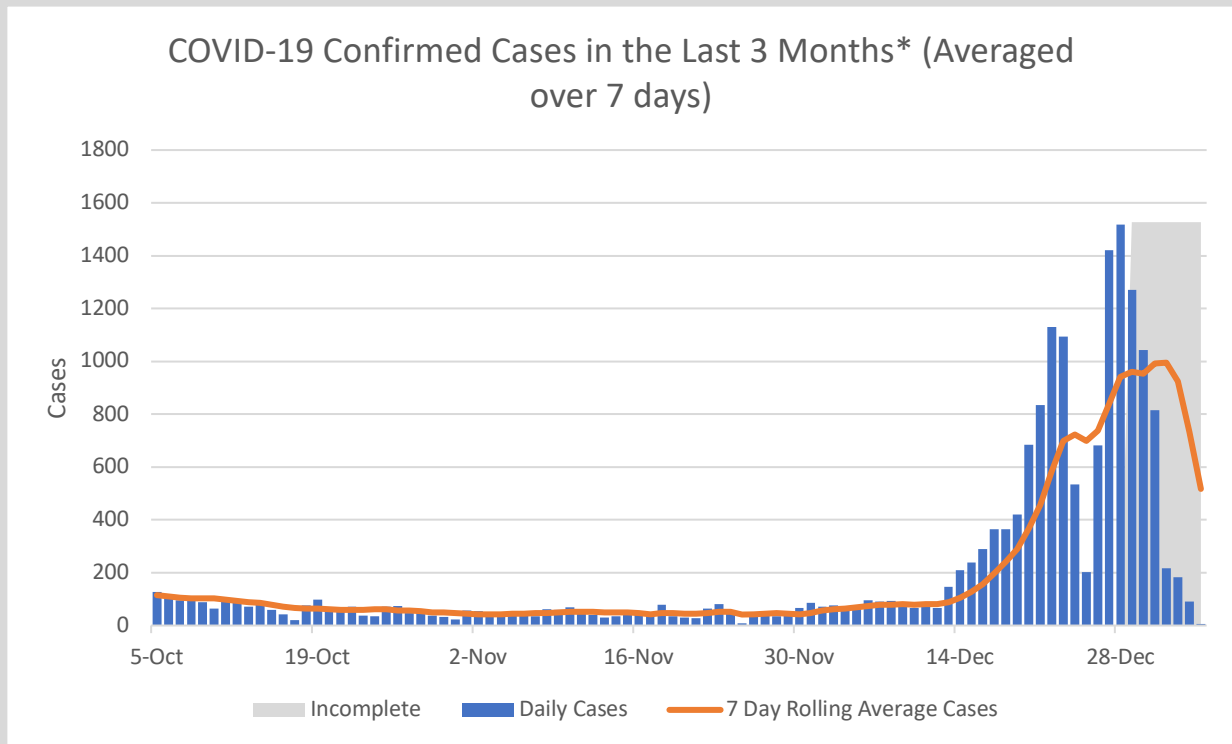
Daily and Cumulative COVID-19 Case Counts, DeKalb County*



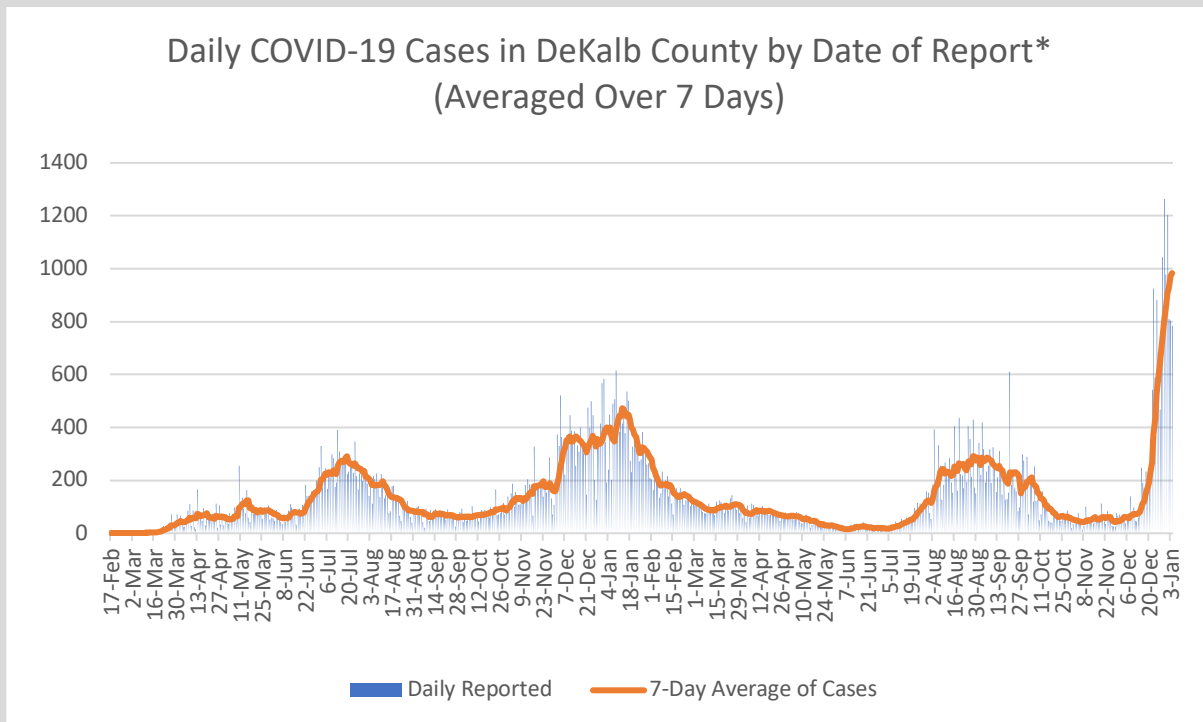
*Counts shown reflect the number of confirmed cases as of 1/4/22 using the date of first positive sample collection. Where date of first positive sample collection were not available, the date of report creation in GA SENDSS was used instead. **Note: All data reported are preliminary and subject to change. Delays in data reporting may cause changes in data counts, particularly within the last week.

- As of January 4, DeKalb County has reported 97,881 confirmed cases of 2019 novel coronavirus disease (COVID-19) and 1,276 confirmed COVID-19 deaths, an increase of 2,063 cases (+2.2%) and 1 death (+0.1%) since the last report on January 3.
- During the week of 12/27 to 01/02, there were 1,054 COVID-19 cases per 100,000 people in Dekalb, which is defined as “high” community transmission by the CDC
- 10,809 COVID-19 cases (1363 cases per 100,000 population) were diagnosed in the most recent 14-day period (12/16–12/29), a **652% INCREASE** from the previous 14-days (12/2-12/15)
- Of all persons diagnosed with COVID-19 in DeKalb, 7.2% needed hospitalization and 1.3% died
- As of January 4, Georgia Department of Public Health reported that DeKalb accounted for 6.6% of the total number of COVID-19 cases in Georgia to date
- As of January 4, Georgia Department of Public Health reported that DeKalb has administered 1,031,823 vaccines, and has 463,234 residents with at least one dose (62%) and 418,334 fully vaccinated residents (56%)
 - 37% of fully vaccinated residents have received a third dose or booster dose.

Other Case Count Metrics



*Counts shown reflect the number of confirmed cases as of 1/4/2022 using date of collection. All data reported are preliminary and subject to change. Positive cases from the last 7 days (gray area) are still being collected, and likely to increase.

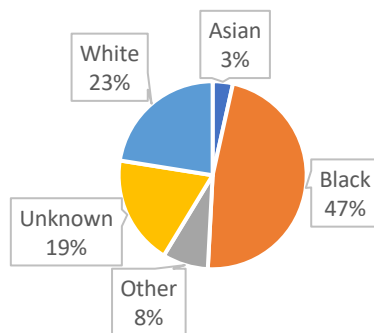


*Counts shown reflect the number of confirmed cases as of 1/4/2022 using date of report creating in GA SendSS. All data reported are preliminary and subject to change.

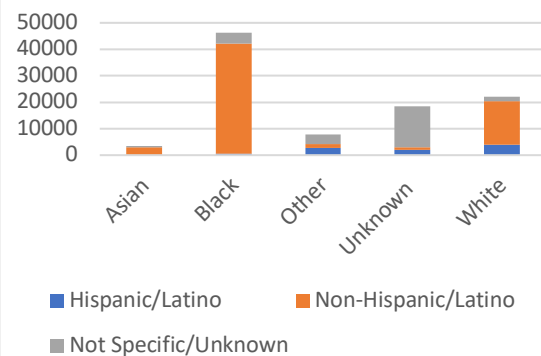
Demographic Distribution of COVID Cases

Demographics		
Gender	N	%
Female	54049	55.2%
Male	43153	44.1%
Unknown	679	0.7%
Age		
9 and Under	6158	6.3%
10 to 19	10590	10.8%
20 to 29	19855	20.3%
30 to 39	19833	20.3%
40 to 49	15017	15.3%
50 to 59	12534	12.8%
60 to 69	7769	7.9%
70 and Over	5927	6.1%
Unknown	198	0.2%
Race		
Asian	3409	3.5%
Black	46338	47.3%
Other	7705	7.9%
Unknown	18422	18.8%
White	22007	22.5%
Ethnicity		
Hispanic/Latino	9609	9.8%
Non-Hispanic/Latino	63040	64.4%
Not Specific/Unknown	25232	25.8%

COVID-19 Cases by Race,
DeKalb County

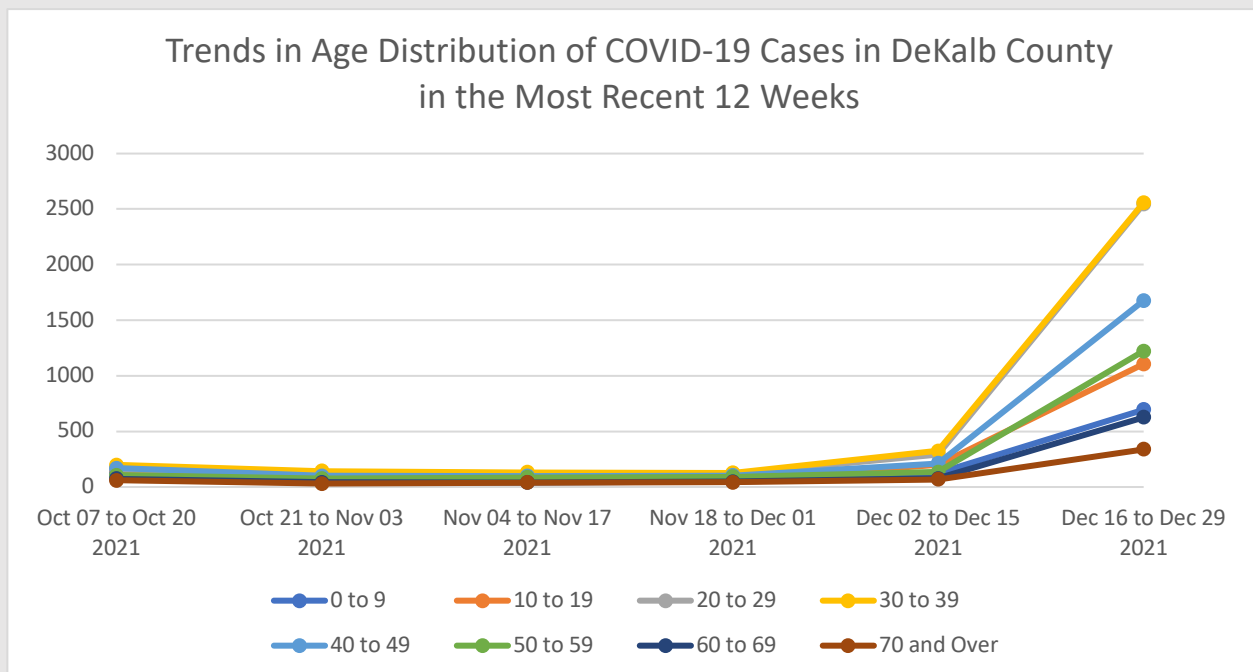
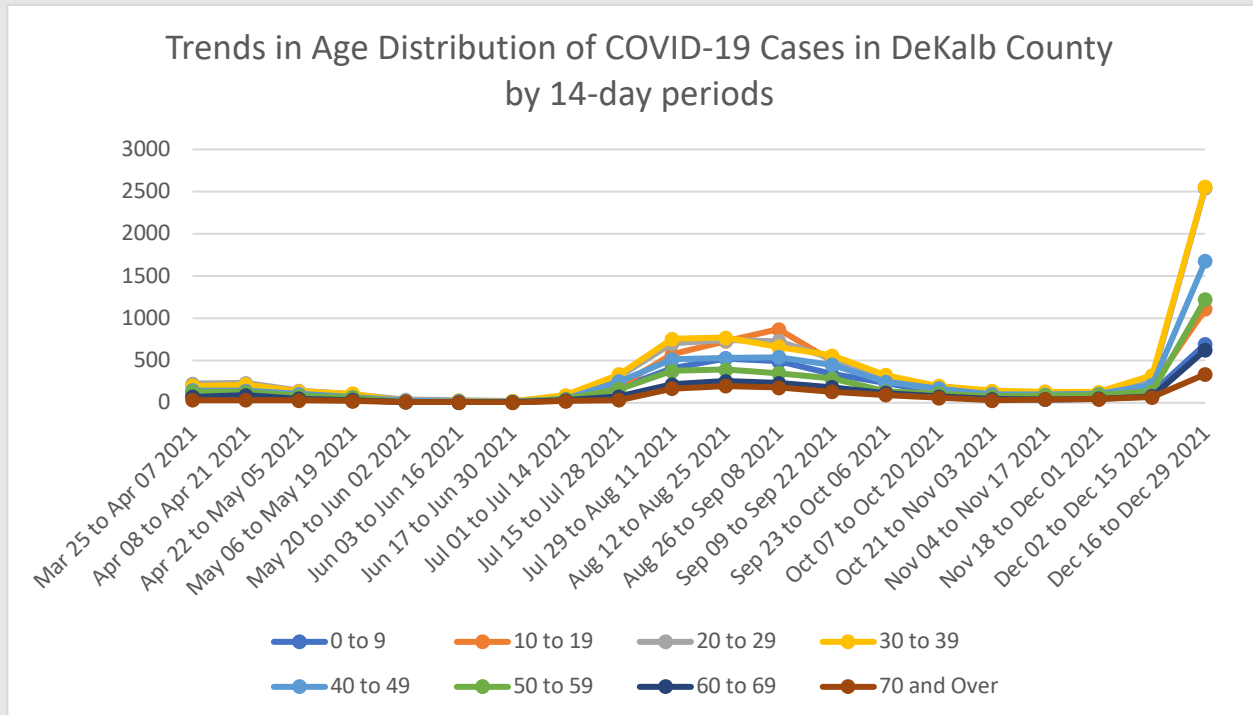


COVID-19 Cases by Race
and Ethnicity, DeKalb
County



*"Other" includes Native Hawaiian/Pacific Islander and American Indian/Native American

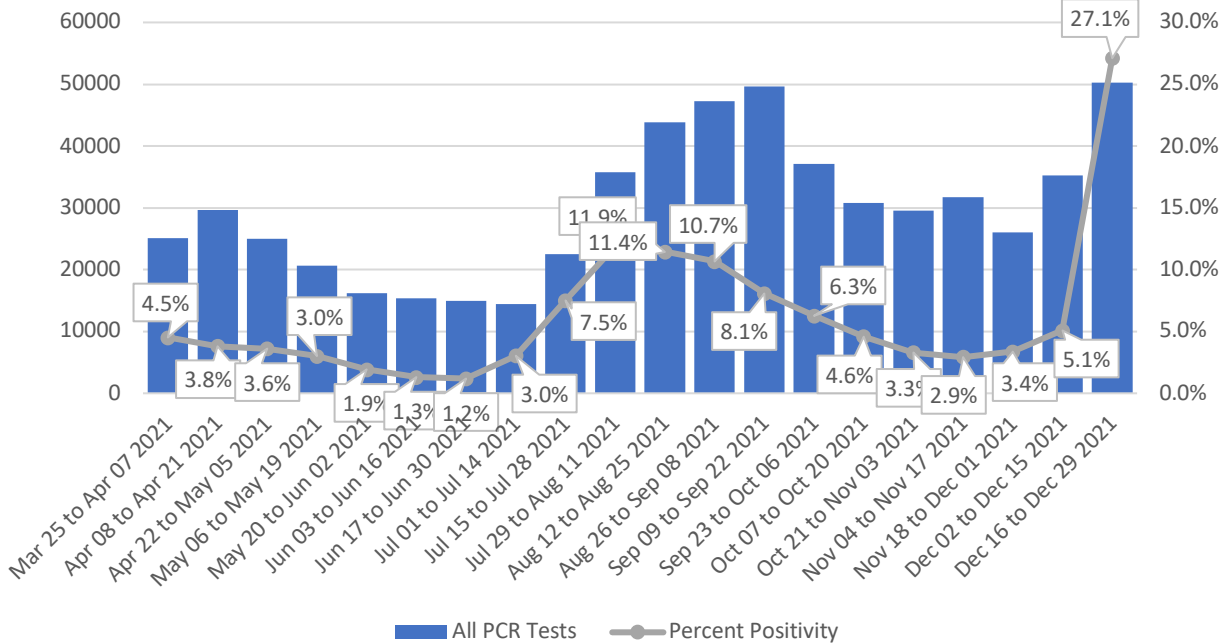
Age Distribution of COVID Cases



*Counts shown reflect the number of confirmed cases as of 1/4/22 using the date of first positive sample collection. Where date of first positive sample collection were not available, the date of report creation in GA SENDSS was used instead. All data reported are preliminary and subject to change.

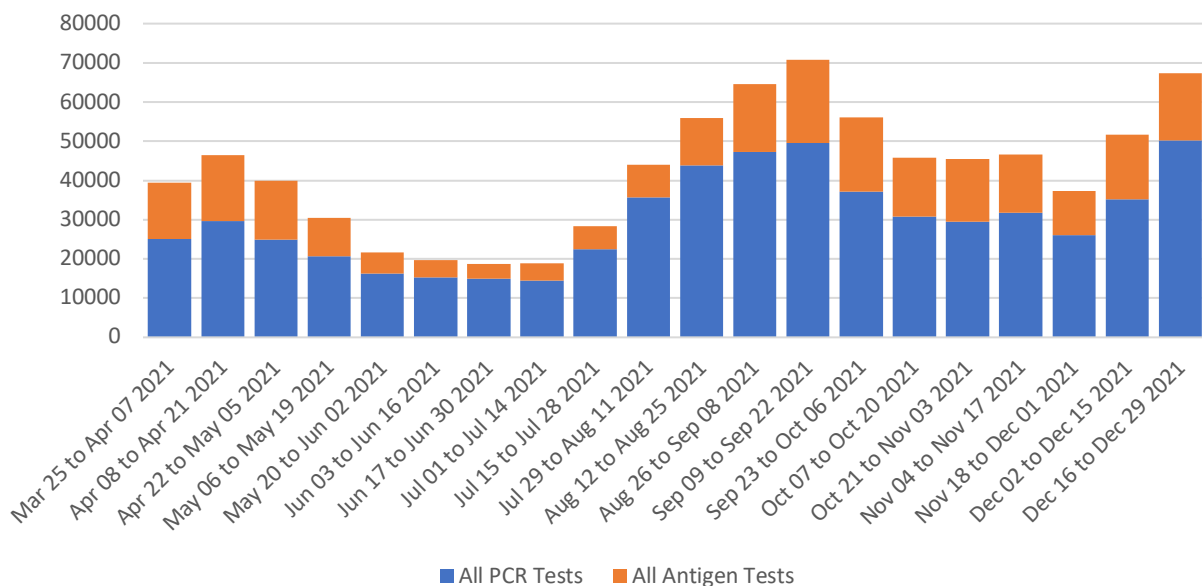
COVID-19 Testing and Positivity

Trends in positive COVID-19 PCR Tests in DeKalb County by 14-day Periods



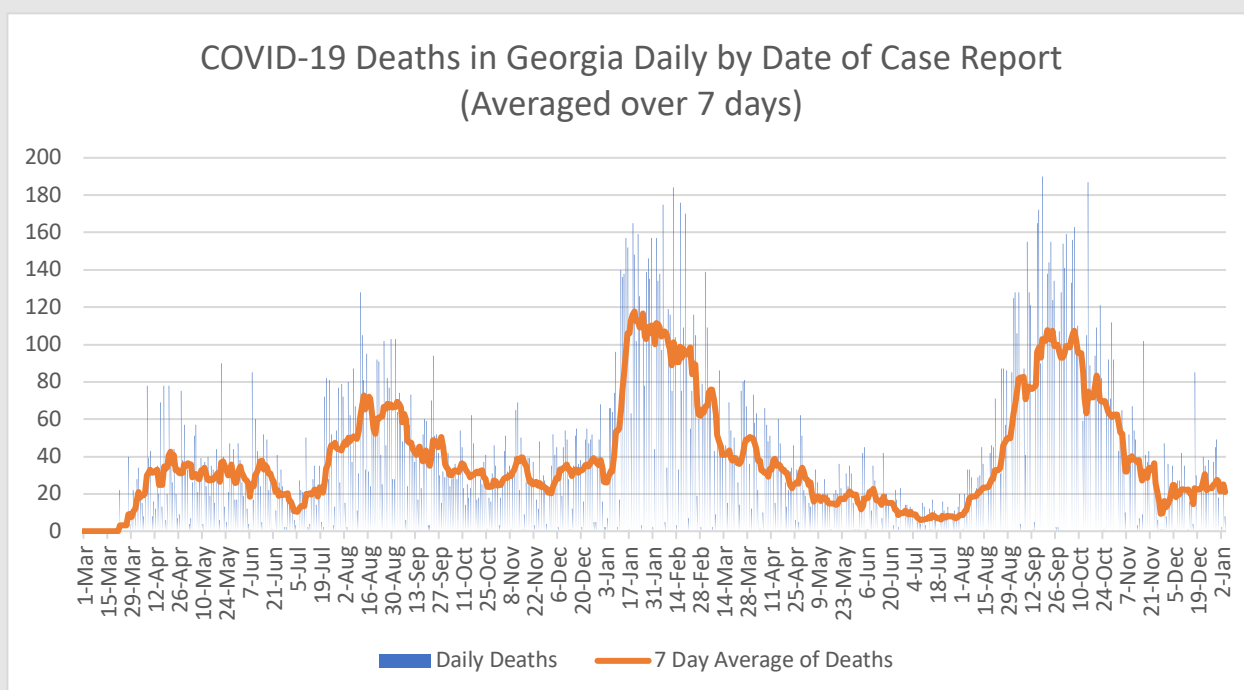
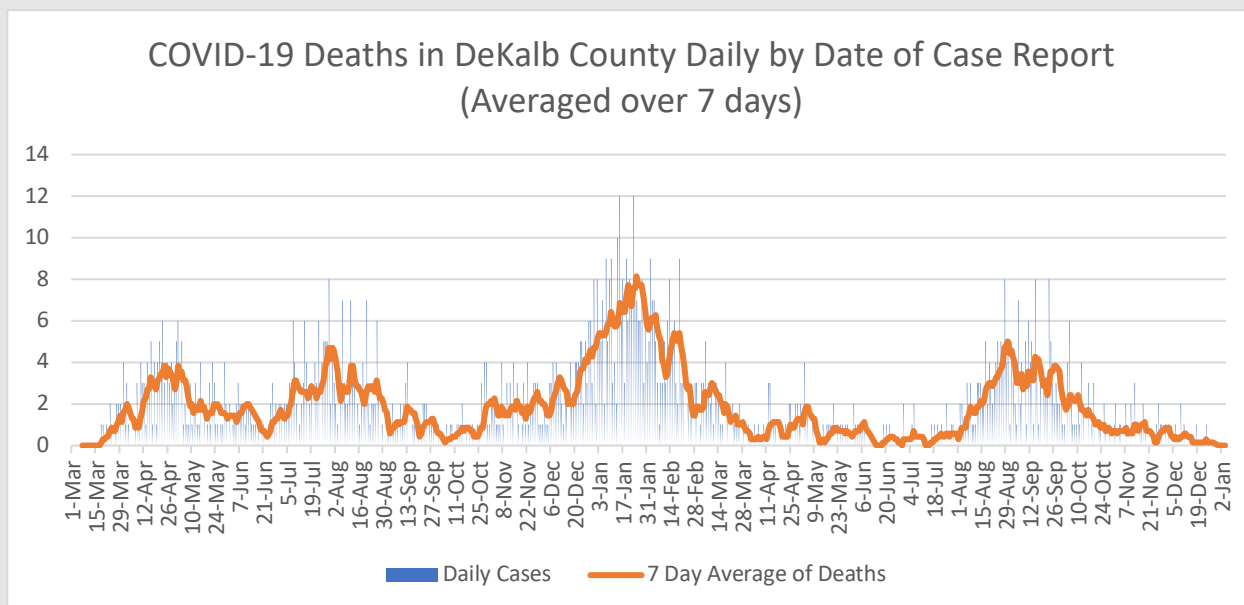
*Data as of 1/4/2021. Only data on Polymerase Chain Reaction (PCR) tests were included. All data reported are preliminary and subject to change

Total Testing in DeKalb County by 14-day Periods



*Data as of 1/4/2021. Negative antigen tests from pop-up sites are not always reported and at-home kits do not report any results, leading to an underreporting of antigen test counts. All data reported are preliminary and subject to change.

COVID-19 Related Deaths

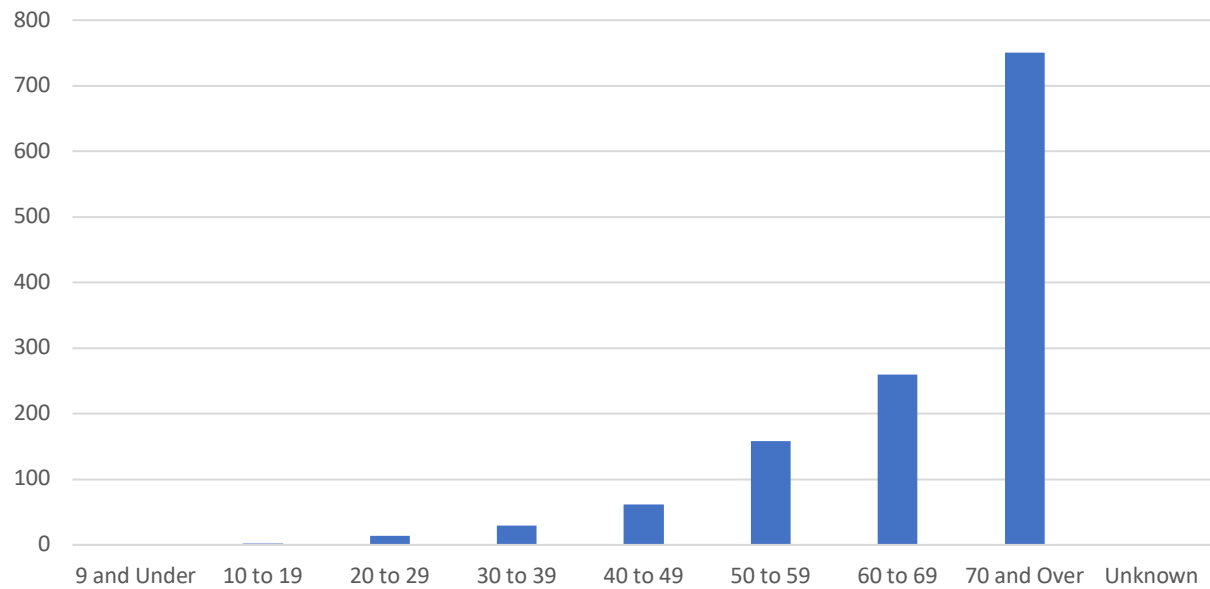


*DeKalb County Data as of 1/4/2022. Georgia data as 1/4/2021. Date of case reported used. All data reported are preliminary and subject to change.

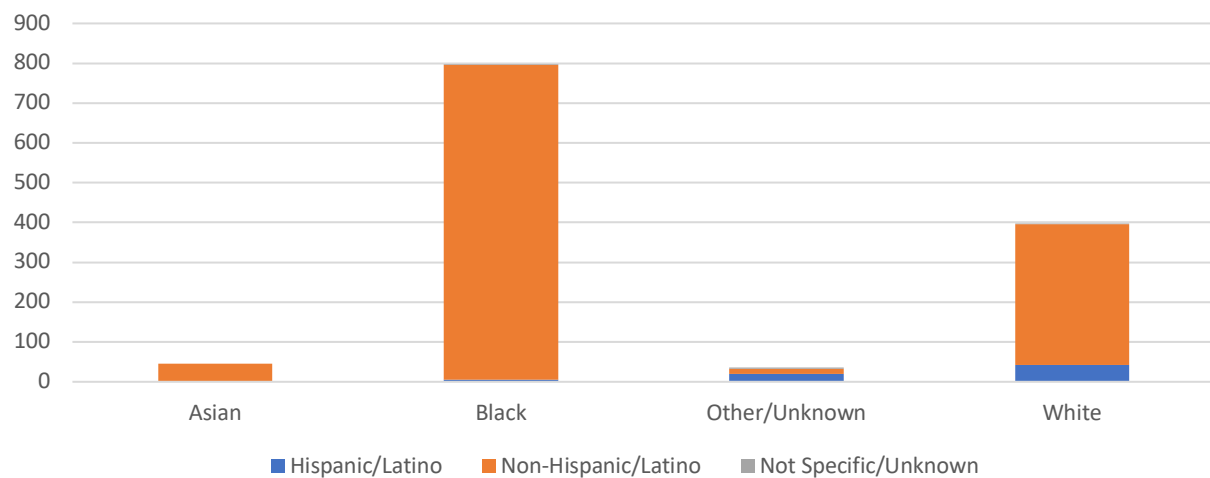
Total COVID-19 Related Hospitalizations/Deaths in DeKalb County, GA	Count	%
Hospitalization		
Needed Hospitalization	7043	7.2%
Not Known to Have Been Hospitalized	90838	92.8%
Deaths		
Died	1276	1.3%

COVID-19 Related Death Demographics

COVID-19 Related Deaths by Age, DeKalb County

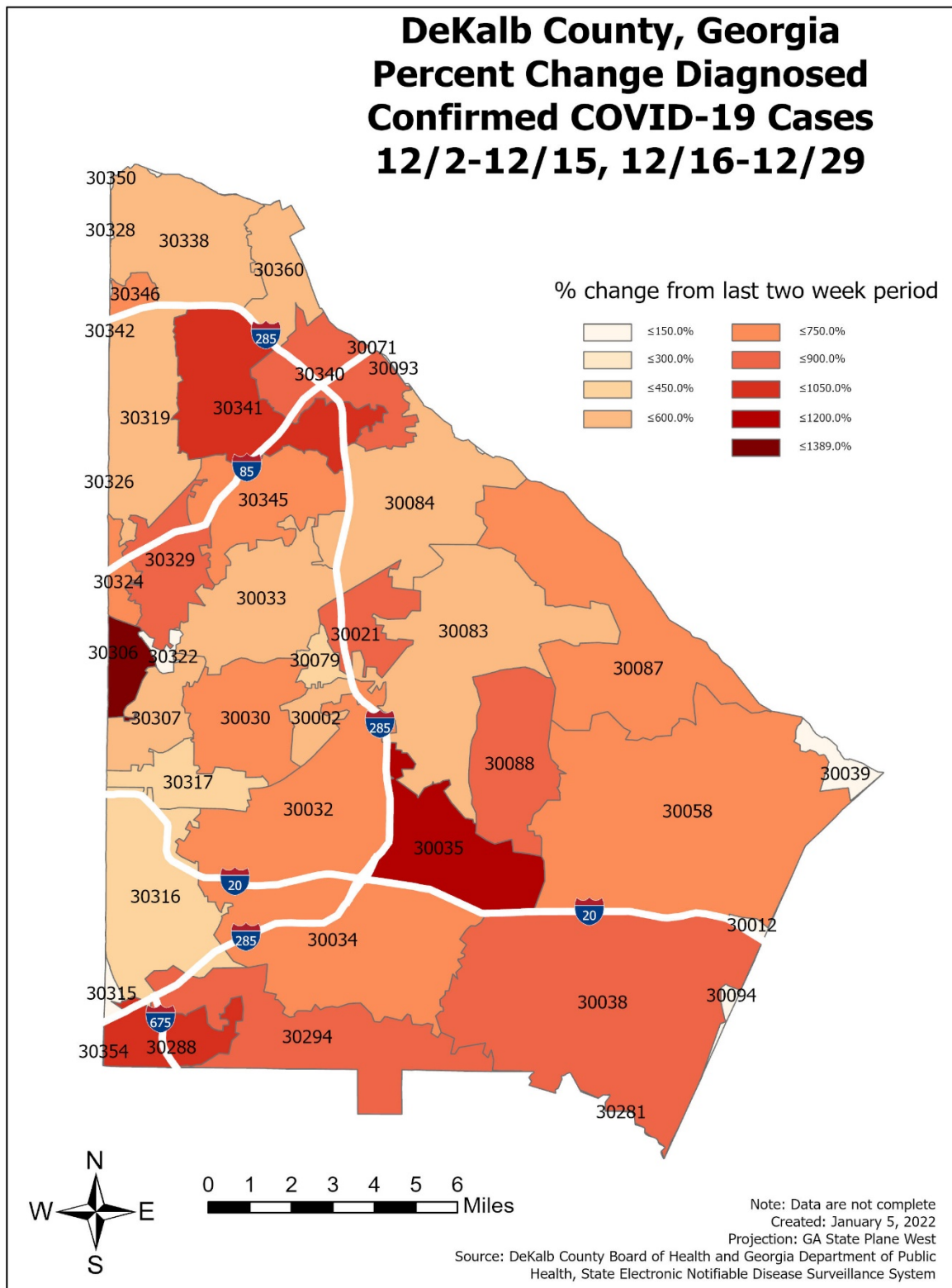


COVID-19 Related Deaths by Race and Ethnicity, DeKalb County



*"Other" includes Native Hawaiian/Pacific Islander and American Indian/Native American

Map of Change in COVID-19 Cases by Zip Code



*Note: Please see table below for more details on COVID-19 cases reported by zip code.

Table of COVID-19 Cases by Zip Code

Zip	Previous 1/2	Current 1/4	Percent of Total	Previous 14 Days 12/2-12/15	Recent 14 Days 12/16-12/29	Percent Change in 14-day periods
All DeKalb	89893	95818	100.0%	1139	8295	628.3%
30058	7559	8080	8.4%	93	633	580.6%
30083	6497	6838	7.1%	74	493	566.2%
30034	6132	6540	6.8%	73	505	591.8%
30032	5671	5991	6.3%	62	447	621.0%
30038	5517	5979	6.2%	71	580	716.9%
30319	4717	5027	5.2%	67	532	694.0%
30341	4075	4396	4.6%	38	418	1000.0%
30338	3644	3888	4.1%	73	391	435.6%
30329	3638	3819	4.0%	48	360	650.0%
30084	3522	3699	3.9%	40	220	450.0%
30088	3210	3449	3.6%	43	309	618.6%
30340	3152	3337	3.5%	27	202	648.1%
30087	3091	3312	3.5%	32	285	790.6%
30033	2886	3059	3.2%	43	272	532.6%
30035	2769	2954	3.1%	22	248	1027.3%
30316	2736	2901	3.0%	48	309	543.8%
30294	2591	2789	2.9%	39	280	617.9%
30021	2527	2647	2.8%	18	156	766.7%
30345	2477	2621	2.7%	28	216	671.4%
30030	2384	2570	2.7%	40	265	562.5%
30360	1620	1756	1.8%	22	126	472.7%
30317	1438	1536	1.6%	17	162	852.9%
30307	1067	1163	1.2%	23	178	673.9%
30346	752	819	0.9%	11	76	590.9%
30306	718	782	0.8%	7	106	1414.3%
30324	506	564	0.6%	6	62	933.3%
30002	497	547	0.6%	10	60	500.0%
30322	466	471	0.5%	6	11	83.3%
30288	417	455	0.5%	5	39	680.0%
30079	411	436	0.5%	8	35	337.5%
30350	421	432	0.5%	<5	9	NA
30328	124	145	0.2%	<5	27	NA
30039	94	96	0.1%	<5	<5	NA
30072	69	72	0.1%	<5	8	NA
30094	66	68	0.1%	<5	<5	NA
30012	45	48	0.1%	<5	<5	NA
30315	20	20	0.0%	<5	<5	NA
Unknown	2367	2512	2.6%	138	37	-73.2%

*To account for reporting lag of new diagnoses, the 14-day periods were calculated from a week prior. Data cleaning may lead to reassignment of cases from one territory to another based on corrected addresses which may appear as “decreases” when compared to previous counts. Zip codes with fewer than 5 cases reported were omitted from the table. “Unknown” includes Dekalb residents without a zip code or with an incorrectly entered zip code.

Vaccination Overview

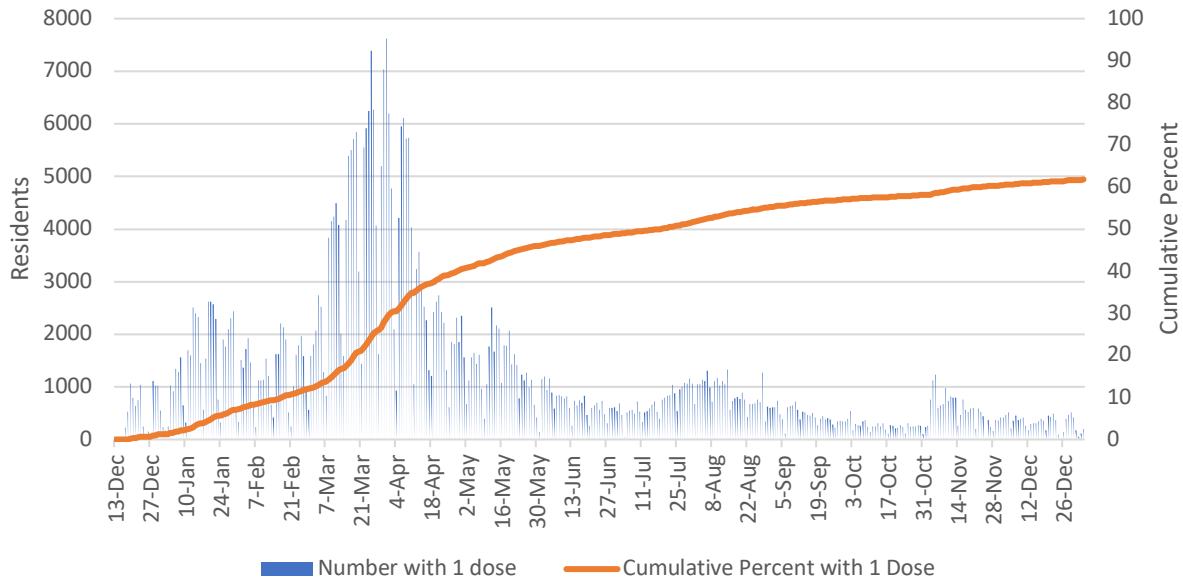
1,031,823 total
doses
administered**

61.7% of
residents with at
least one dose

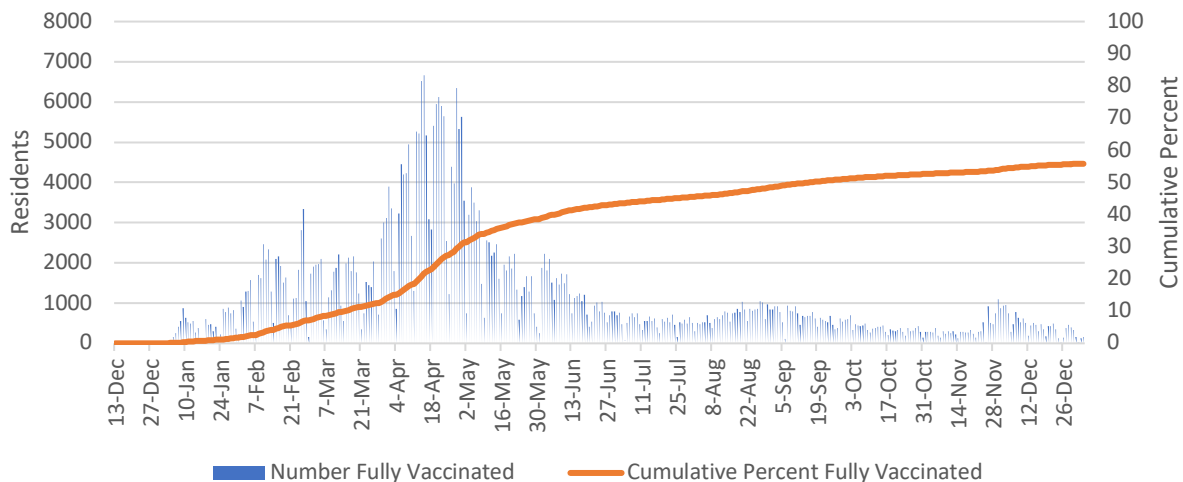
55.7% of
residents fully
vaccinated

20% residents
have an additional
dose***

DeKalb County Residents with At Least 1 Dose



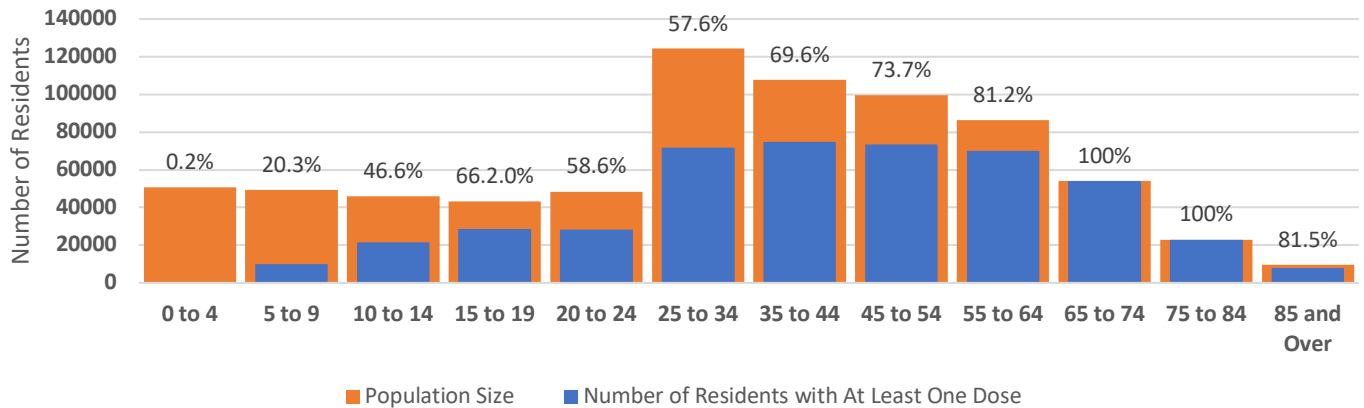
Fully Vaccinated Dekalb County Residents



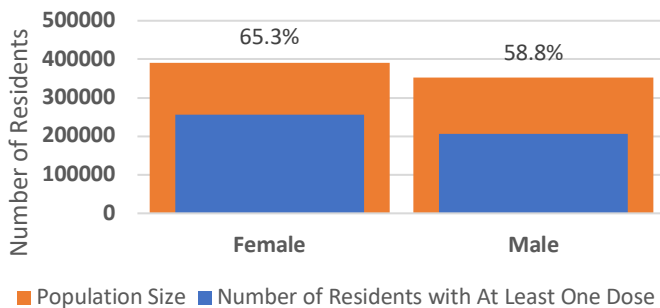
*Counts shown reflect the number of vaccinated residents as of 1/4/2021 using the date of administration. A completed vaccination course refers to an individual receiving two doses of a two-dose series, or one dose of a one-dose series. Individuals are considered fully vaccinated 14 days after their final dose. **Note: All data reported are preliminary and subject to change. Delays in data reporting may cause changes in data counts. ***Note: Additional dose includes booster doses and third doses for immunocompromised persons

Vaccination Demographics

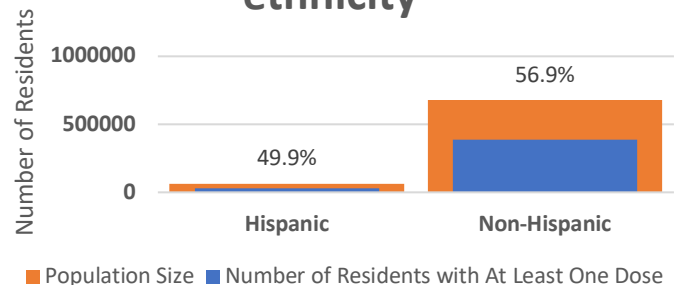
Number of Residents with at least one dose by age



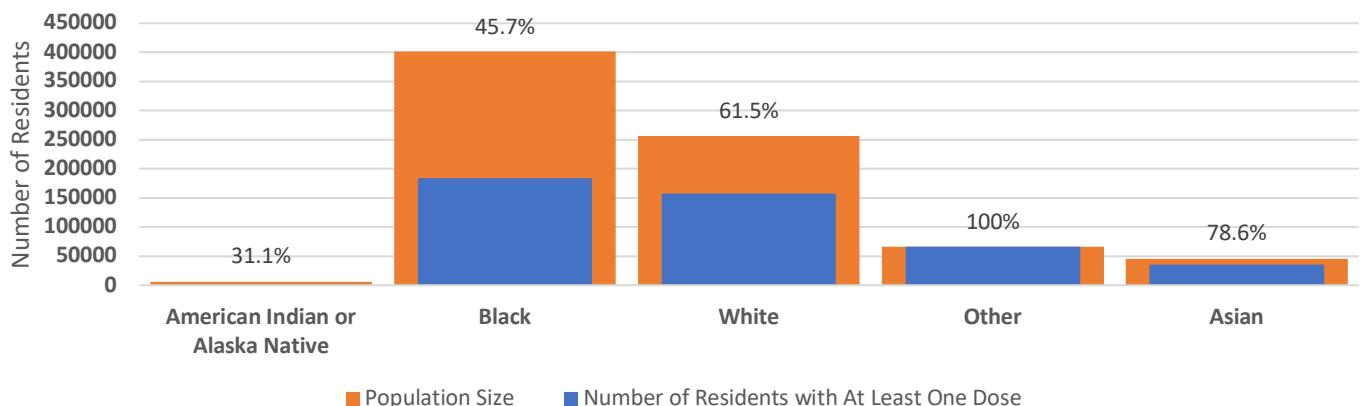
Number of Residents with at least one dose by gender



Number of Residents with at least one dose by ethnicity

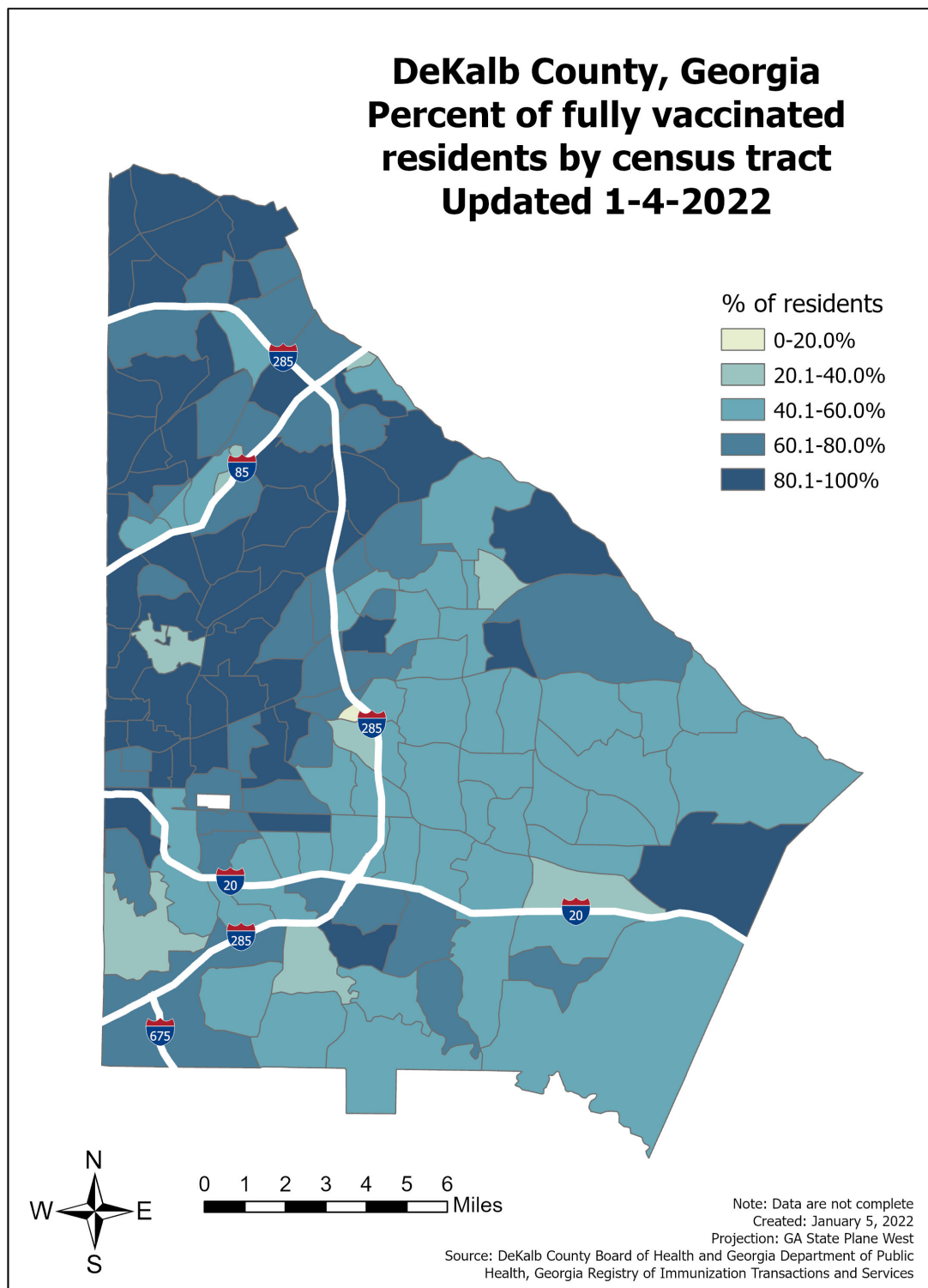


Number of Residents with at least one dose by race



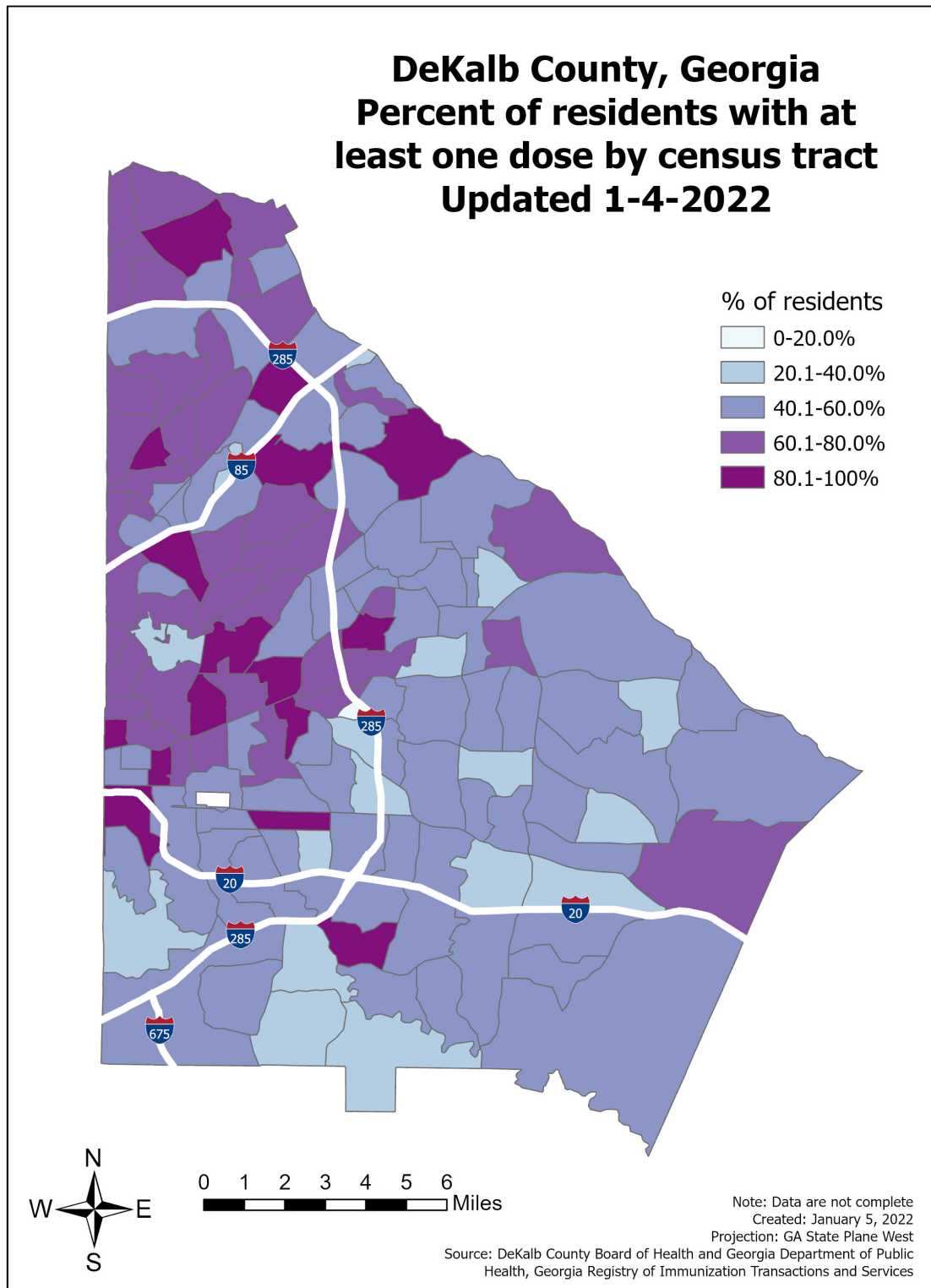
*Counts shown reflect the number of residents with at least one dose of a COVID-19 vaccine as of 1/4/21. These graphs do not include: 672 individuals (0.1%) with unknown gender, 18,732 individuals (4.0%) with unknown race, and 45,104 individuals (9.7%) with unknown ethnicity. All age groups containing children under 12 have a lower percentage in part due to vaccination not being available to children under the age of 12 until recently. **Note: All data reported are preliminary and subject to change. Delays in data reporting may cause changes in data counts.

Map by Fully Vaccinated



*Note: An individual is considered fully vaccinated if it has been at least 14 days (2 weeks) since the completion of the COVID-19 vaccination series (two doses in a two-dose series OR one dose in a one-dose series). Data obtained from the Georgia Department of Public Health's COVID-19 vaccination dashboard, last updated on 1/4/2021

Map by Partially Vaccinated



*Note: Data obtained from the Georgia Department of Public Health's COVID-19 vaccination dashboard, last updated on 1/4/2021