

## Overview

**131,722**  
Confirmed  
cases

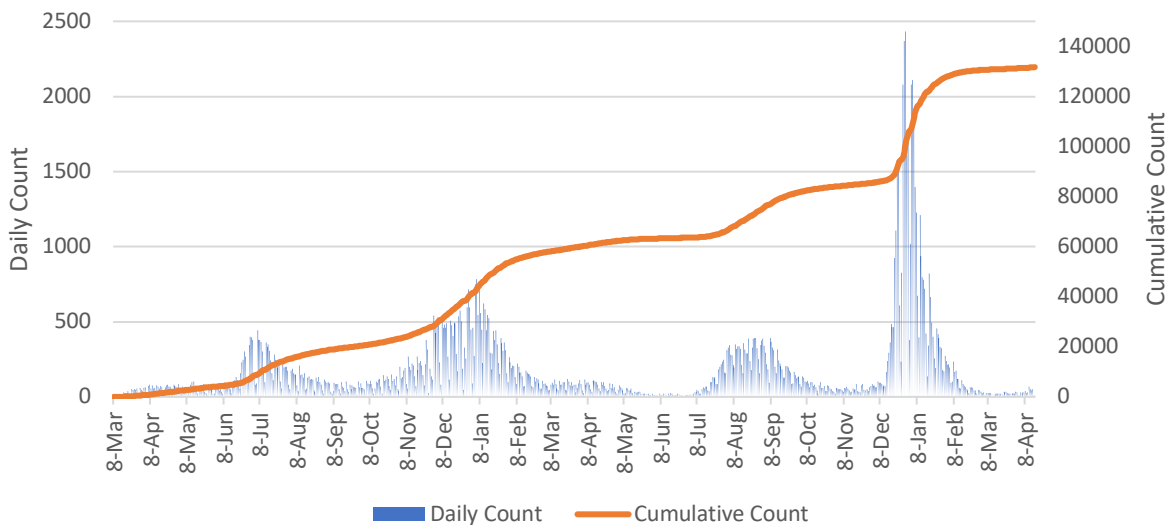
**7.0%** of cases  
in Georgia are in  
DeKalb

**54** cases per  
100K people in the  
last 7 days

**8,243**  
hospitalizations

**1,545**  
deaths

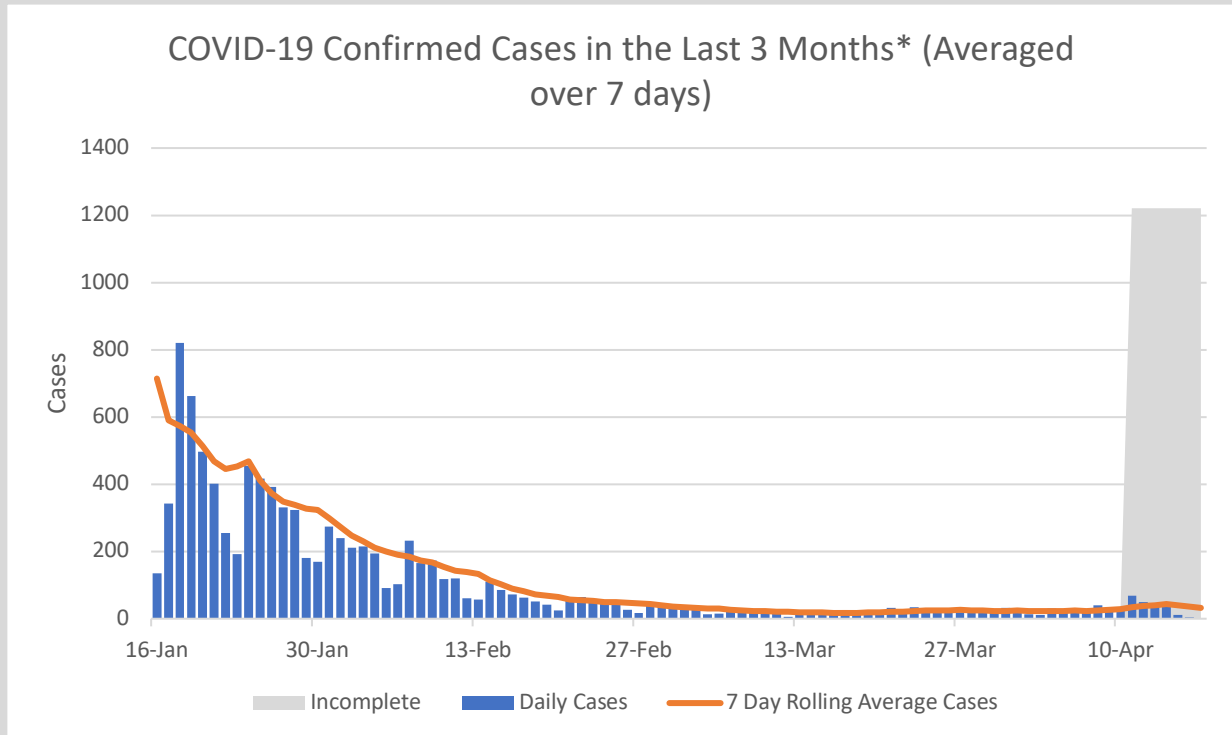
Daily and Cumulative COVID-19 Case Counts,  
DeKalb County\*



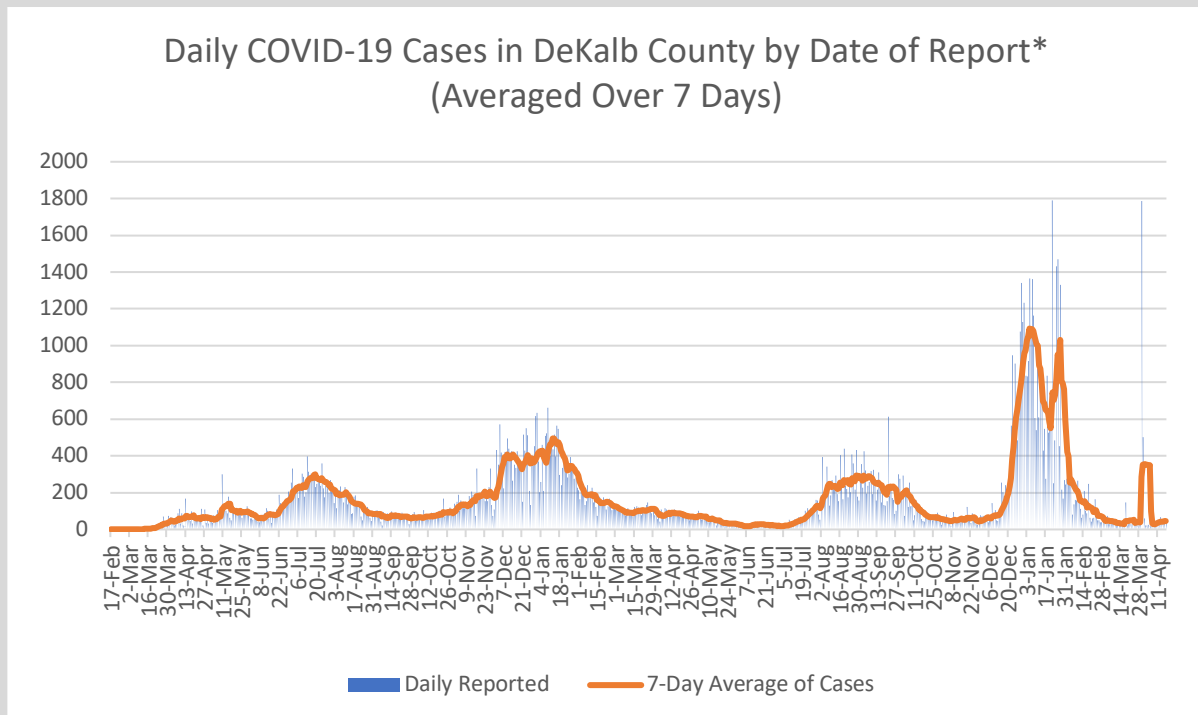
\*Counts shown reflect the number of confirmed cases as of 4/17/22 using the date of first positive sample collection. Where date of first positive sample collection were not available, the date of report creation in GA SENDSS was used instead. \*\*Note: All data reported are preliminary and subject to change. Delays in data reporting may cause changes in data counts, particularly within the last week.

- As of April 17, DeKalb County has reported 131,722 confirmed cases of 2019 novel coronavirus disease (COVID-19) and 1,545 confirmed COVID-19 deaths, an increase of 265 cases (+0.2%) and 1 death (+0.1%) since the last report on April 13. Confirmed cases only count cases with a positive PCR test, and do not include antigen tests, at-home tests, or antibody tests.
- During the week of 4/6 to 4/12, DeKalb County had “low” community levels, with 54 new COVID-19 cases per 100,000 people in the last 7 days, 3 COVID-19 hospital admissions per 100,000 people in DeKalb, and a 1.6% inpatient bed utilization rate for COVID-19 patients
- 407 COVID-19 cases (51 cases per 100,000 population) were diagnosed in the most recent 14-days (3/29–4/11), a **27.6% INCREASE** from the previous 14-days (3/15–3/28)
- Of all persons diagnosed with COVID-19 in DeKalb, 6.3% needed hospitalization and 1.2% died
- As of April 15, Georgia Department of Public Health reported that DeKalb accounted for 7.0% of the total number of COVID-19 cases in Georgia to date
- As of April 15, Georgia Department of Public Health reported that DeKalb has administered 1,136,491 vaccines, and has 480,913 residents with at least one dose (64%) and 438,154 fully vaccinated residents (59%)

## Other Case Count Metrics



\*Counts shown reflect the number of confirmed cases as of 4/17/2022 using date of collection. All data reported are preliminary and subject to change. Positive cases from the last 7 days (gray area) are still being collected, and likely to increase.

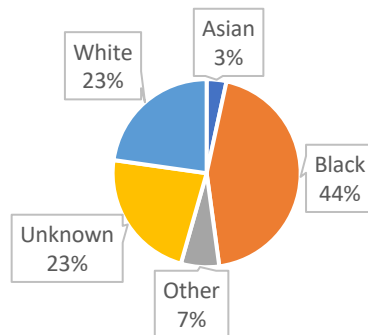


\*Counts shown reflect the number of confirmed cases as of 4/17/2022 using date of report creating in GA SendSS. All data reported are preliminary and subject to change. \*\* Note: GDPH reported a data backlog of approximately 9,600 previously unreported cases statewide on 3/30/2022.

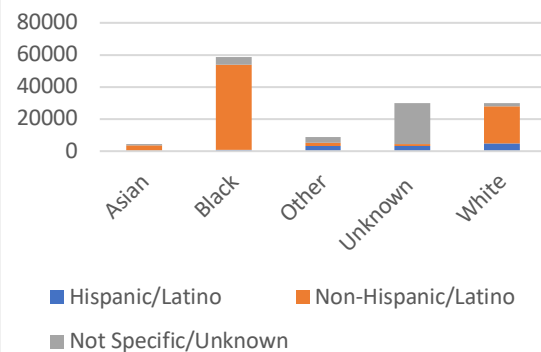
## Demographic Distribution of COVID Cases

Demographics		
Gender	N	%
Female	73124	55.5%
Male	57434	43.6%
Unknown	1164	0.9%
Age		
9 and Under	9614	7.3%
10 to 19	14244	10.8%
20 to 29	25876	19.6%
30 to 39	26525	20.1%
40 to 49	20025	15.2%
50 to 59	16749	12.7%
60 to 69	10458	7.9%
70 and Over	7852	6.0%
Unknown	379	0.3%
Race		
Asian	4481	3.4%
Black	58544	44.4%
Other	8660	6.6%
Unknown	30054	22.8%
White	29983	22.8%
Ethnicity		
Hispanic/Latino	12268	9.3%
Non-Hispanic/Latino	83406	63.3%
Not Specific/Unknown	36048	27.4%

COVID-19 Cases by Race,  
DeKalb County



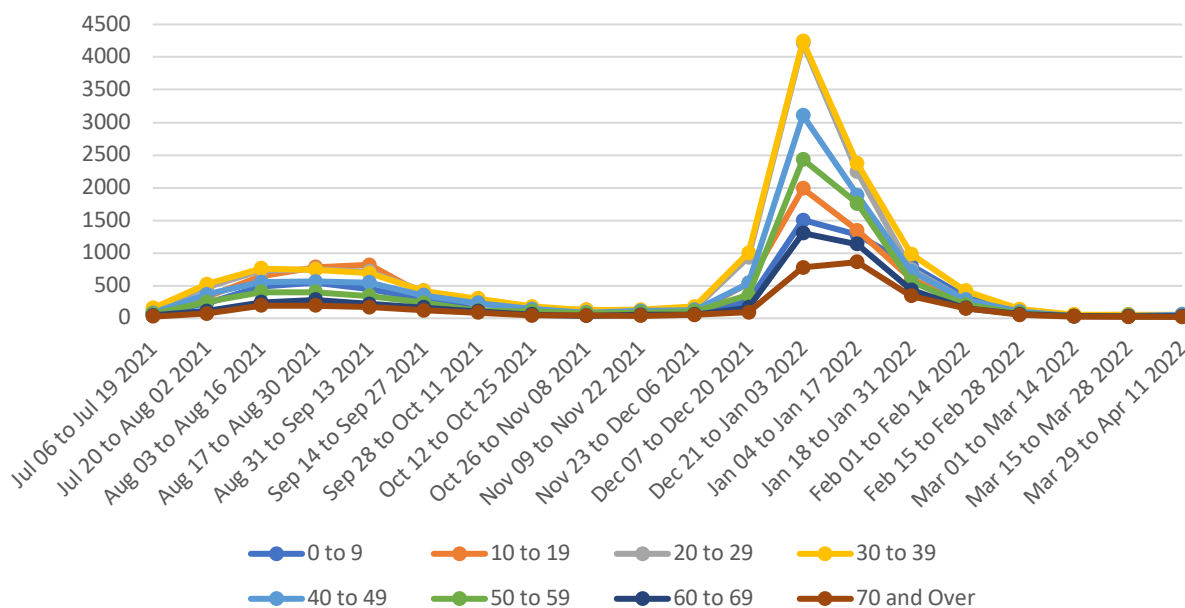
COVID-19 Cases by Race  
and Ethnicity, DeKalb  
County



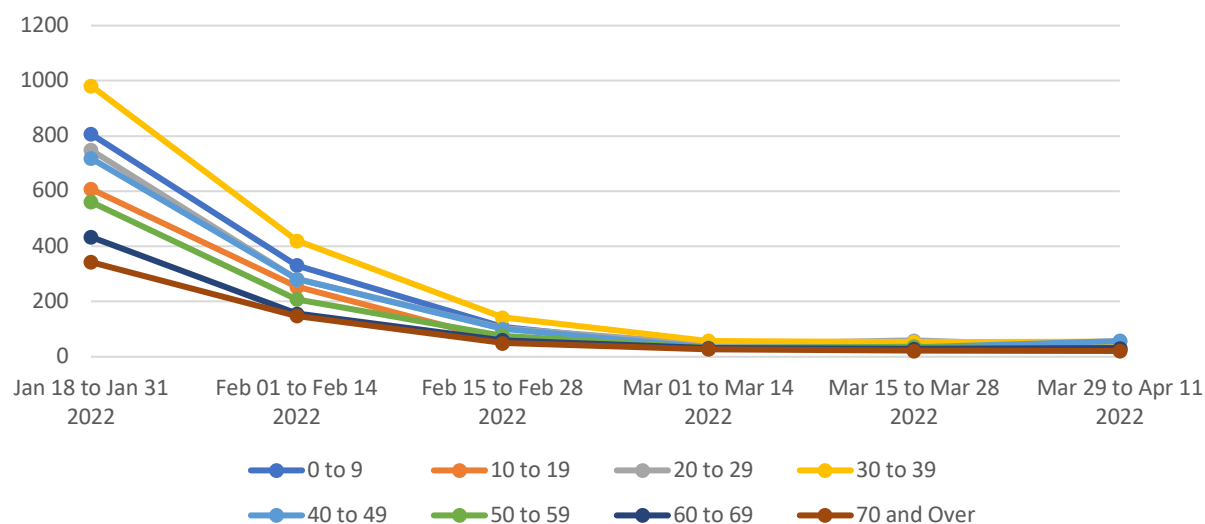
\*"Other" includes Native Hawaiian/Pacific Islander and American Indian/Native American

## Age Distribution of COVID Cases

Trends in Age Distribution of COVID-19 Cases in DeKalb County  
by 14-day periods



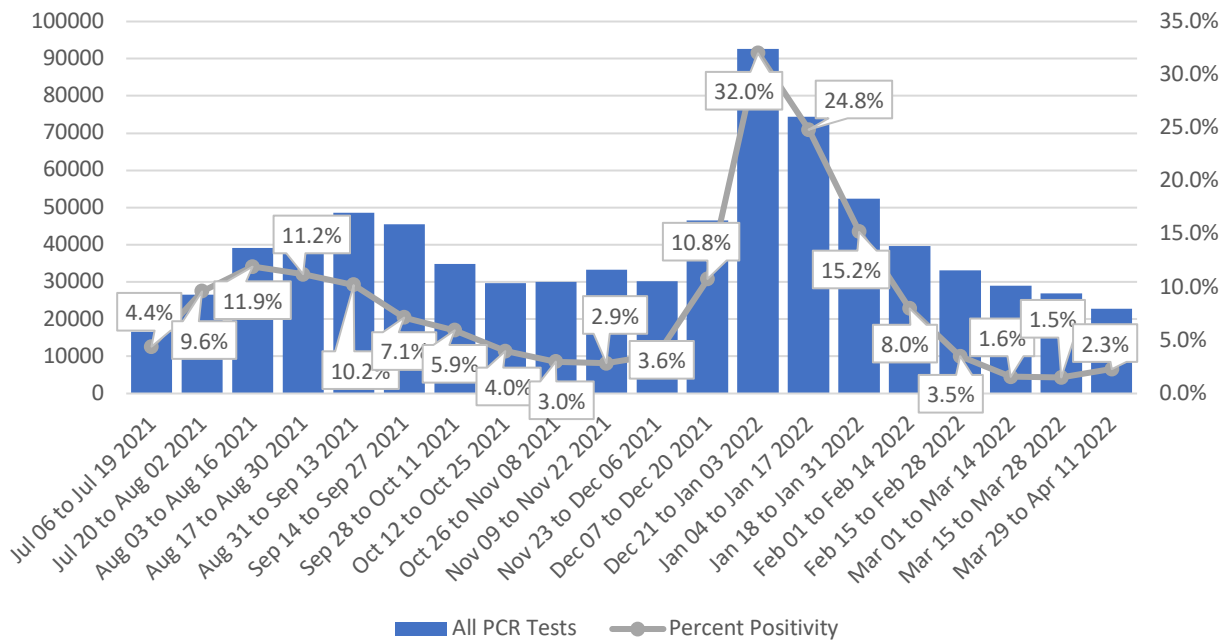
Trends in Age Distribution of COVID-19 Cases in DeKalb County  
in the Most Recent 12 Weeks



\*Counts shown reflect the number of confirmed cases as of 4/17/22 using the date of first positive sample collection. Where date of first positive sample collection were not available, the date of report creation in GA SENDSS was used instead. All data reported are preliminary and subject to change.

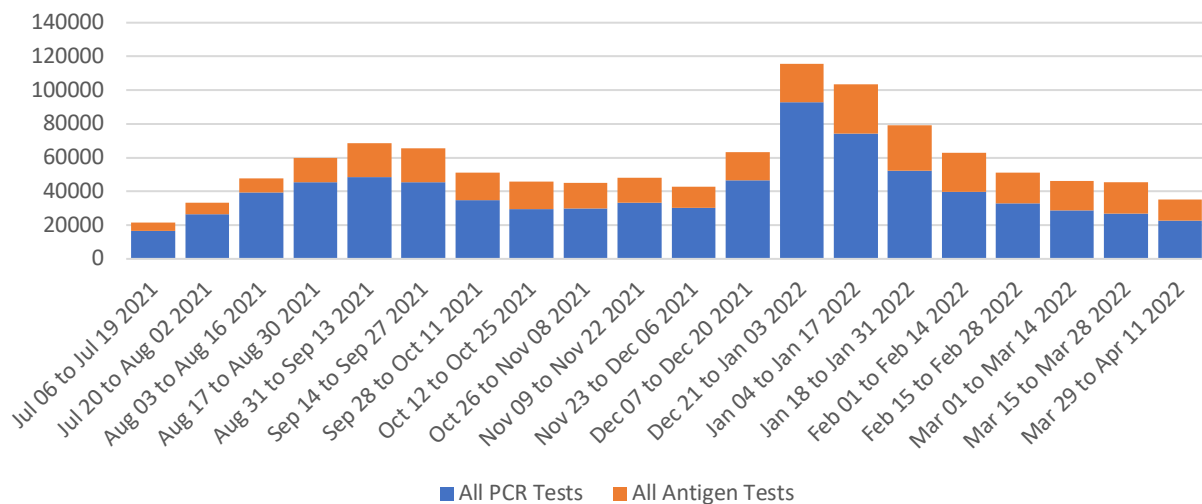
## COVID-19 Testing and Positivity

### Trends in positive COVID-19 PCR Tests in DeKalb County by 14-day Periods



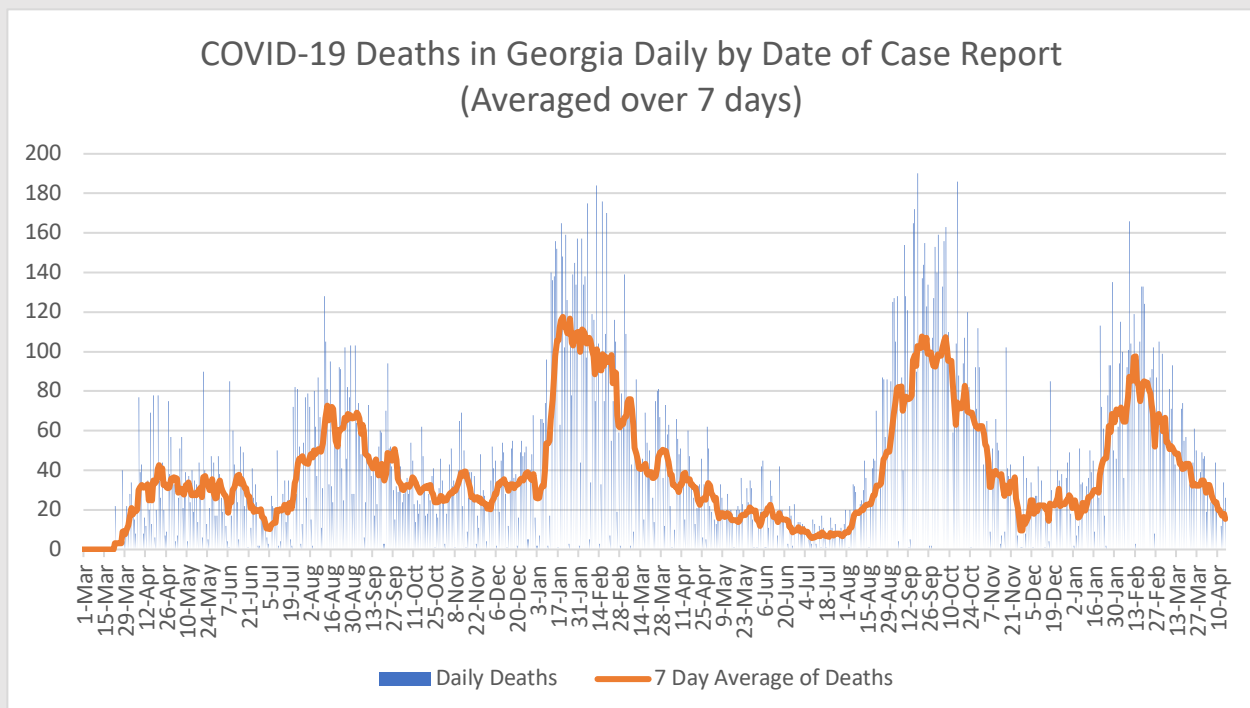
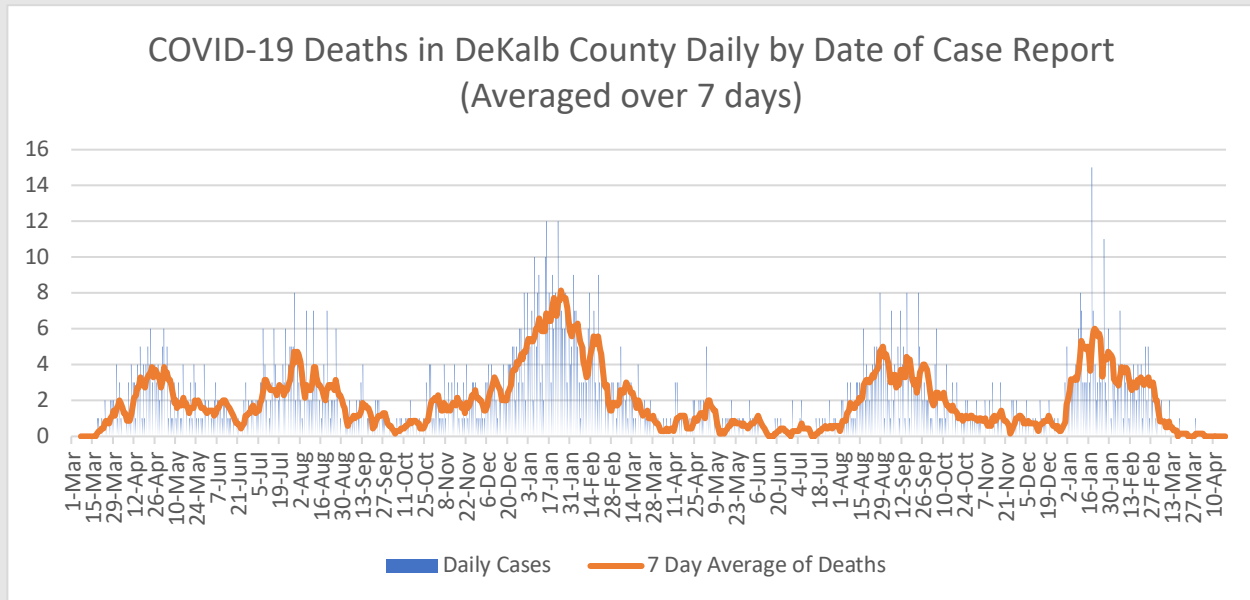
\*Data as of 4/15/2022. Only data on Polymerase Chain Reaction (PCR) tests were included. All data reported are preliminary and subject to change

### Total Testing in DeKalb County by 14-day Periods



\*Data as of 4/15/2022. Negative antigen tests from pop-up sites are not always reported and at-home kits do not report any results, leading to an underreporting of antigen test counts. All data reported are preliminary and subject to change.

## COVID-19 Related Deaths

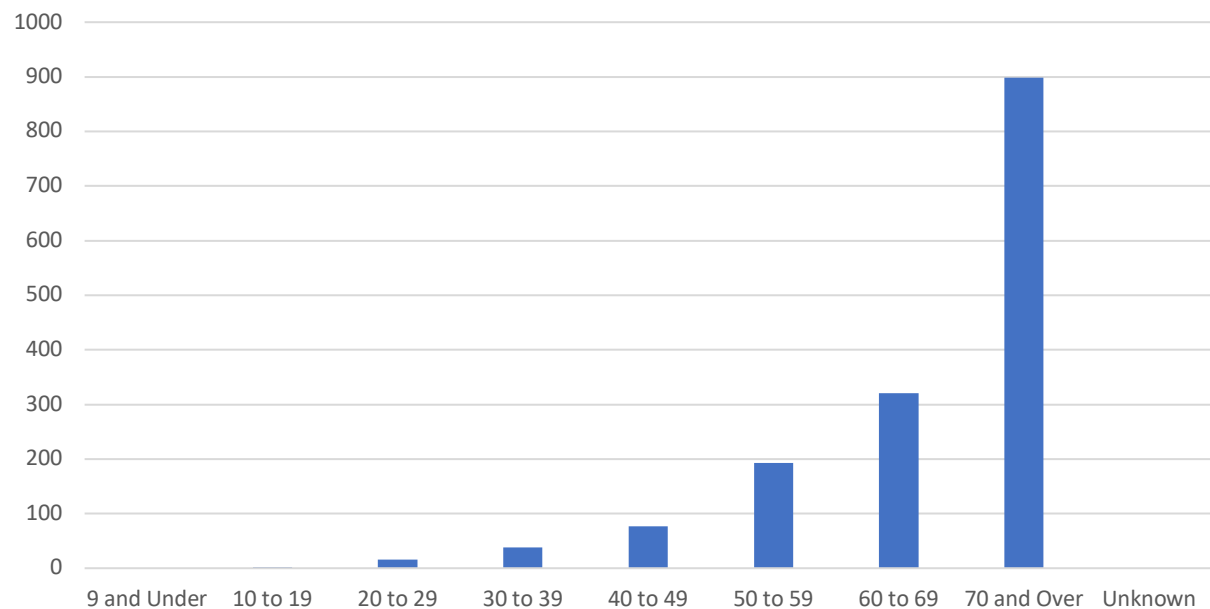


\*DeKalb County Data as of 4/17/2022. Georgia data as 4/15/2022. Date of case reported used. All data reported are preliminary and subject to change.

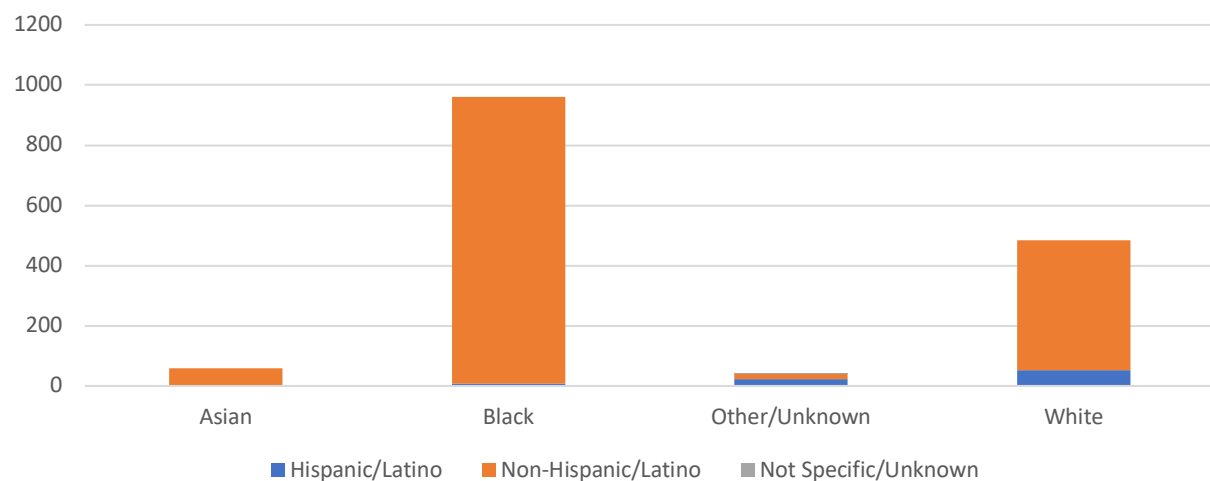
Total COVID-19 Related Hospitalizations/Deaths in DeKalb County, GA		Count	%
<b>Hospitalization</b>			
Needed Hospitalization		8243	6.3%
Not Known to Have Been Hospitalized		123479	93.7%
<b>Deaths</b>			
Died		1545	1.2%

## COVID-19 Related Death Demographics

COVID-19 Related Deaths by Age, DeKalb County

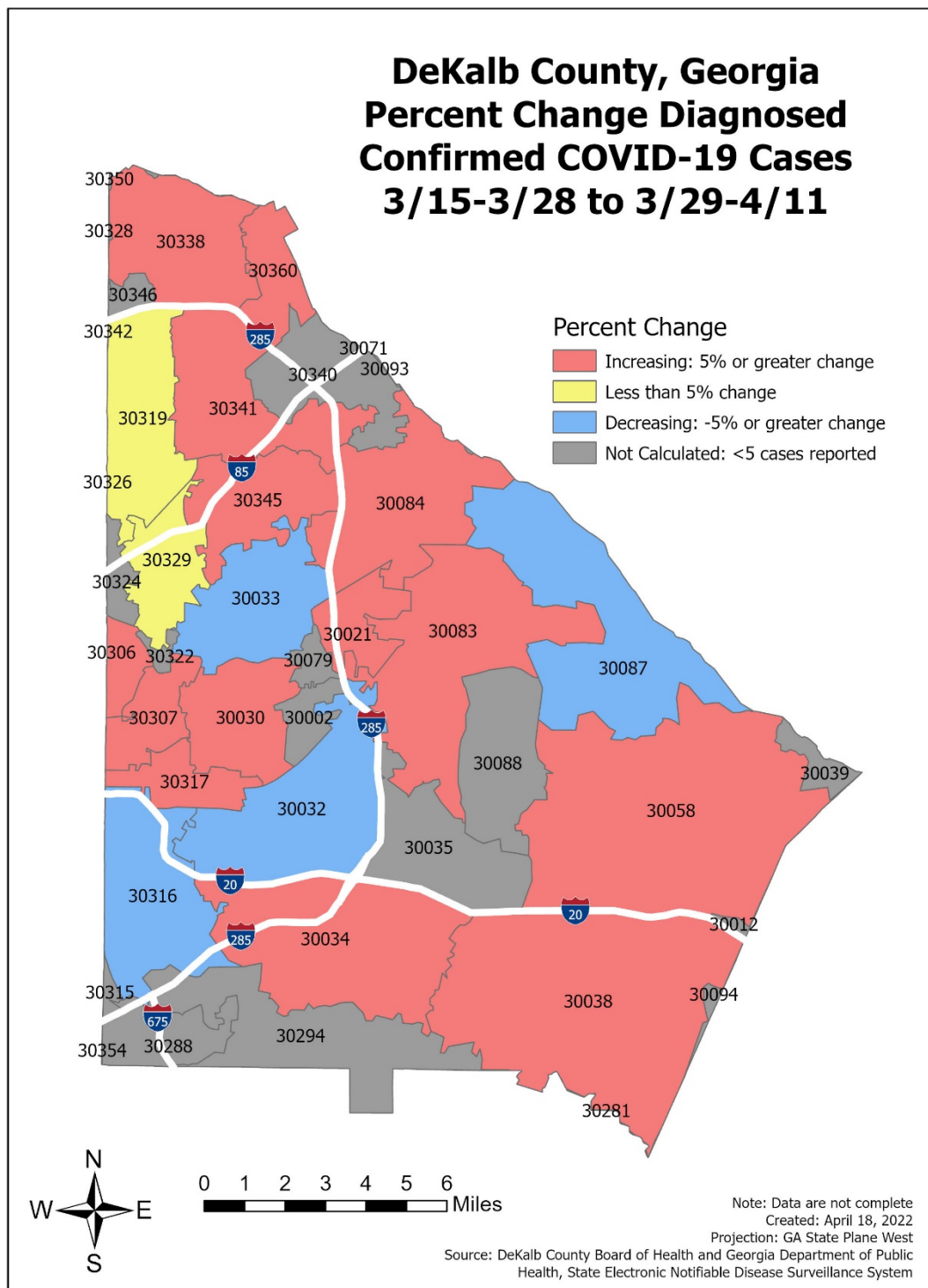


COVID-19 Related Deaths by Race and Ethnicity, DeKalb County



\*\*\*"Other" includes Native Hawaiian/Pacific Islander and American Indian/Native American

## Map of Change in COVID-19 Cases by Zip Code



\*Note: Please see table below for more details on COVID-19 cases reported by zip code.



## Table of COVID-19 Cases by Zip Code

Zip	Previous 4/12	Current 4/17	Percent of Total	Previous 14 Days 3/15-3/28	Recent 14 Days 3/29- 4/11	Percent Change in 14-day periods
<b>All DeKalb</b>	131457	131722	100.0%	319	407	27.6%
<b>30058</b>	10409	10423	7.9%	7	11	57.1%
<b>30083</b>	9042	9050	6.9%	8	14	75.0%
<b>30034</b>	8744	8756	6.6%	7	11	57.1%
<b>30032</b>	8073	8083	6.1%	27	23	-14.8%
<b>30038</b>	7868	7881	6.0%	6	19	216.7%
<b>30319</b>	6814	6829	5.2%	26	26	0.0%
<b>30341</b>	5959	5973	4.5%	15	21	40.0%
<b>30338</b>	5681	5710	4.3%	21	45	114.3%
<b>30329</b>	5350	5362	4.1%	22	21	-4.5%
<b>30084</b>	4942	4952	3.8%	8	11	37.5%
<b>30033</b>	4792	4815	3.7%	24	19	-20.8%
<b>30340</b>	4627	4632	3.5%	<5	7	NA
<b>30088</b>	4603	4609	3.5%	<5	12	NA
<b>30087</b>	4338	4343	3.3%	10	7	-30.0%
<b>30316</b>	4120	4130	3.1%	9	8	-11.1%
<b>30030</b>	4105	4126	3.1%	28	42	50.0%
<b>30345</b>	3933	3940	3.0%	14	15	7.1%
<b>30035</b>	3921	3926	3.0%	<5	<5	NA
<b>30294</b>	3709	3712	2.8%	<5	9	NA
<b>30021</b>	3465	3467	2.6%	5	6	20.0%
<b>30360</b>	2430	2433	1.8%	7	9	28.6%
<b>30317</b>	2172	2178	1.7%	10	11	10.0%
<b>30307</b>	1829	1840	1.4%	16	21	31.3%
<b>30306</b>	1209	1216	0.9%	6	9	50.0%
<b>30346</b>	1042	1045	0.8%	<5	<5	NA
<b>30002</b>	814	814	0.6%	<5	7	NA
<b>30324</b>	806	809	0.6%	<5	<5	NA
<b>30322</b>	655	657	0.5%	9	<5	NA
<b>30288</b>	605	607	0.5%	<5	<5	NA
<b>30079</b>	579	579	0.4%	<5	<5	NA
<b>30350</b>	495	497	0.4%	<5	<5	NA
<b>30328</b>	228	229	0.2%	<5	<5	NA
<b>30039</b>	135	135	0.1%	<5	<5	NA
<b>30072</b>	99	99	0.1%	<5	<5	NA
<b>30094</b>	84	86	0.1%	<5	<5	NA
<b>30012</b>	63	63	0.0%	<5	<5	NA
<b>30315</b>	26	26	0.0%	<5	<5	NA
<b>Unknown</b>	3691	3690	2.8%	<5	11	NA

\*To account for reporting lag of new diagnoses, the 14-day periods were calculated from a week prior. Data cleaning may lead to reassignment of cases from one territory to another based on corrected addresses which may appear as “decreases” when compared to previous counts. Zip codes with fewer than 5 cases reported were omitted from the table. “Unknown” includes Dekalb residents without a zip code or with an incorrectly entered zip code.

# Vaccination Overview

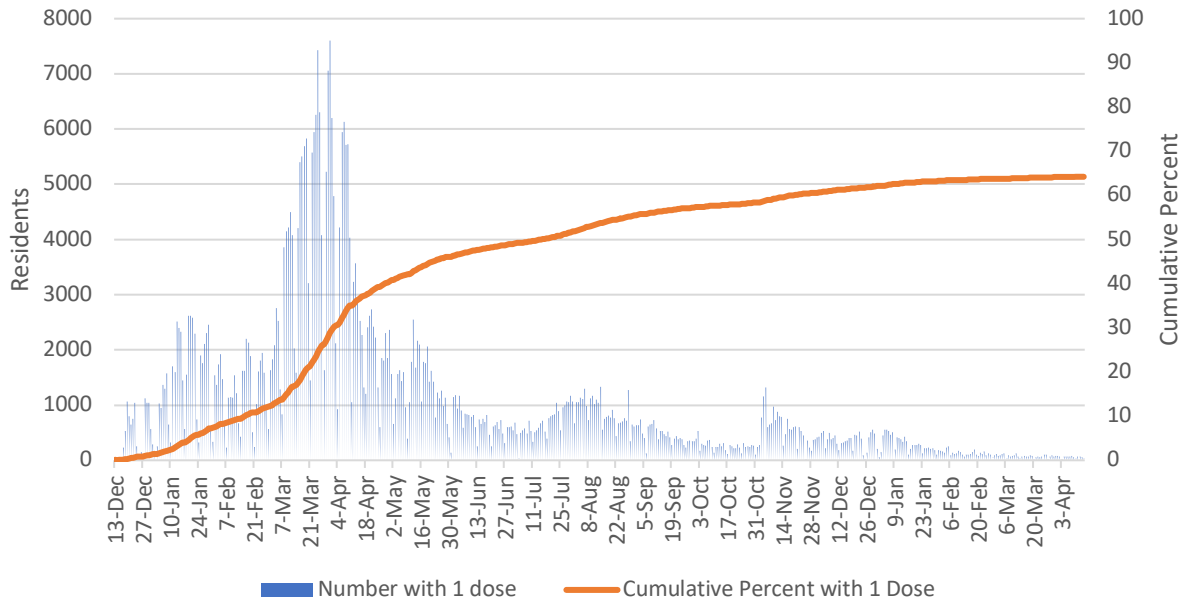
**1,136,491** total  
doses  
administered\*\*

**64.2%** of  
residents with at  
least one dose

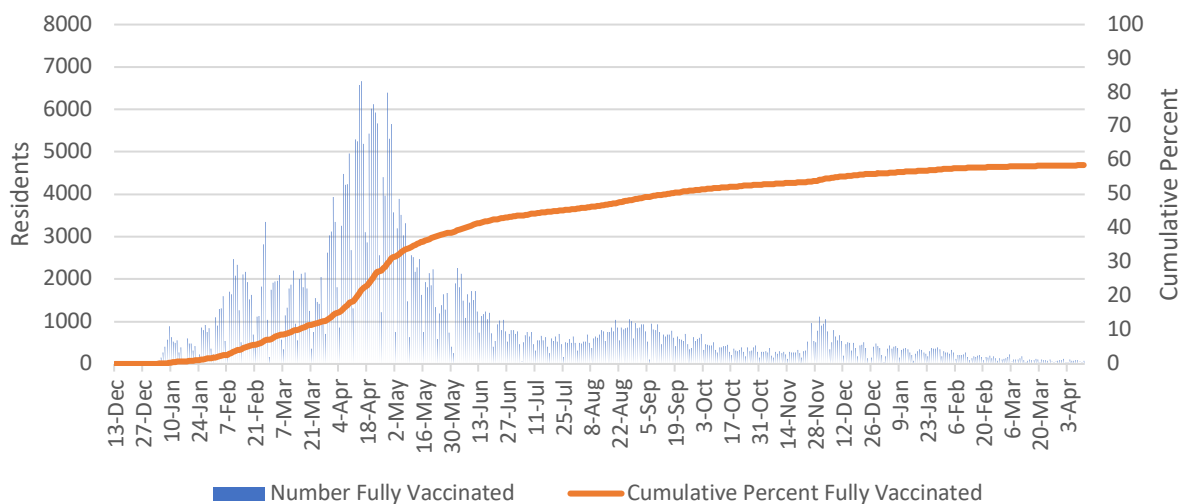
**58.6%** of  
residents fully  
vaccinated

**28%** residents  
have an additional  
dose\*\*\*

## DeKalb County Residents with At Least 1 Dose



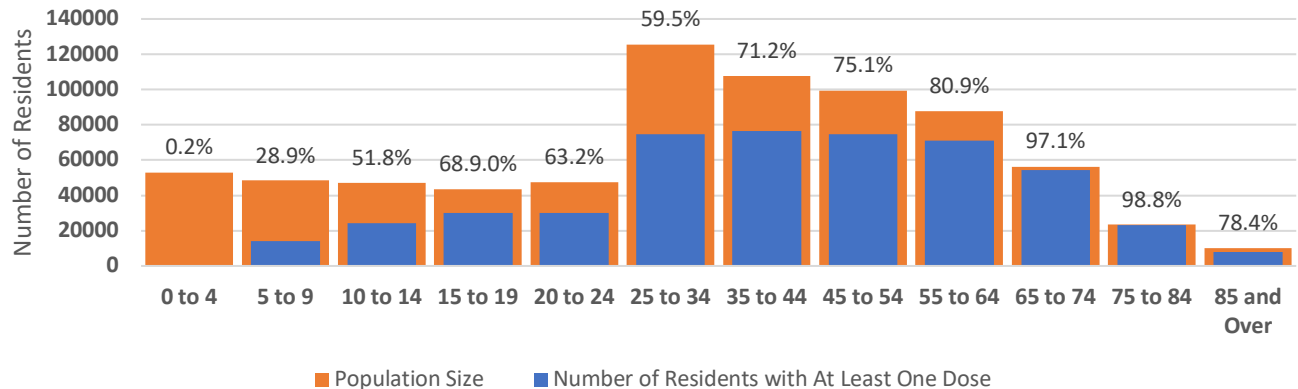
## Fully Vaccinated Dekalb County Residents



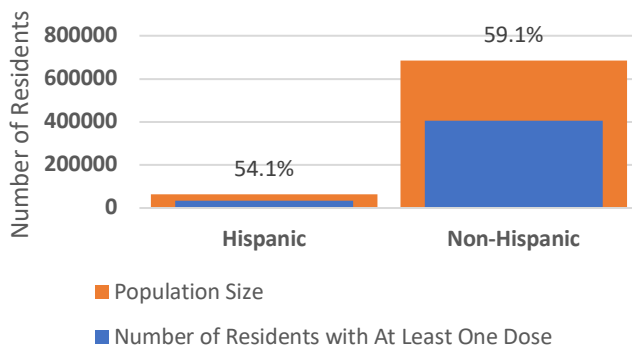
\*Counts shown reflect the number of vaccinated residents as of 4/15/2022 using the date of administration. A completed vaccination course refers to an individual receiving two doses of a two-dose series, or one dose of a one-dose series. Individuals are considered fully vaccinated 14 days after their final dose. \*\*Note: All data reported are preliminary and subject to change. Delays in data reporting may cause changes in data counts. \*\*\*Note: Additional dose includes booster doses and third doses for immunocompromised persons

# Vaccination Demographics

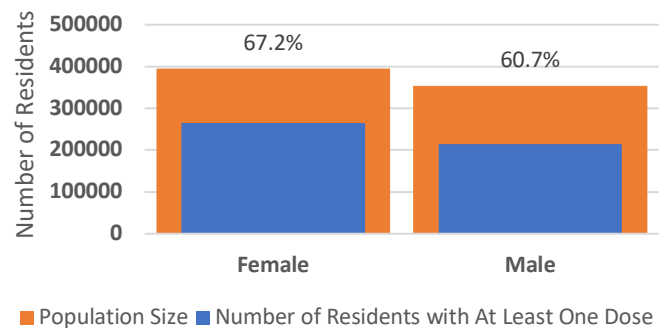
## Residents with at least one dose by age



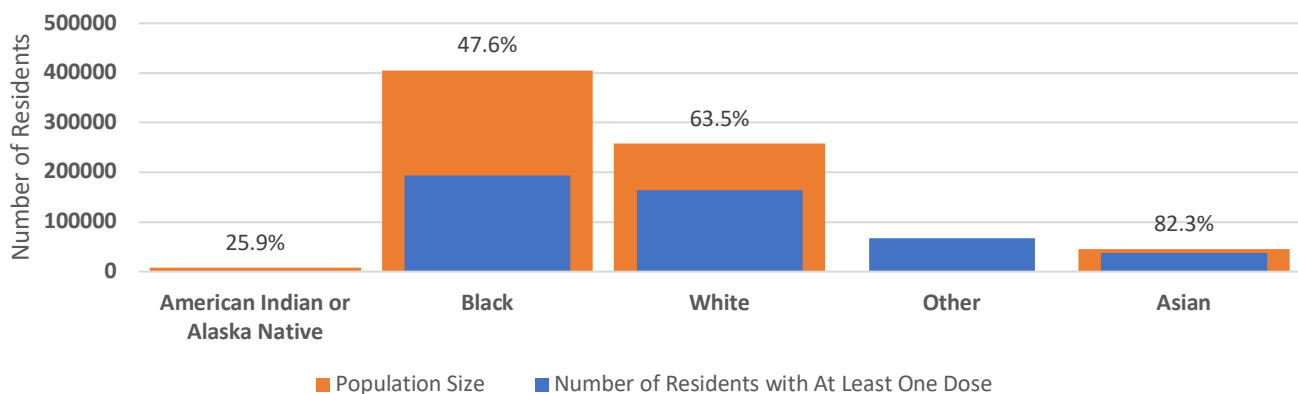
## Residents with at least one dose by ethnicity



## Residents with at least one dose by gender

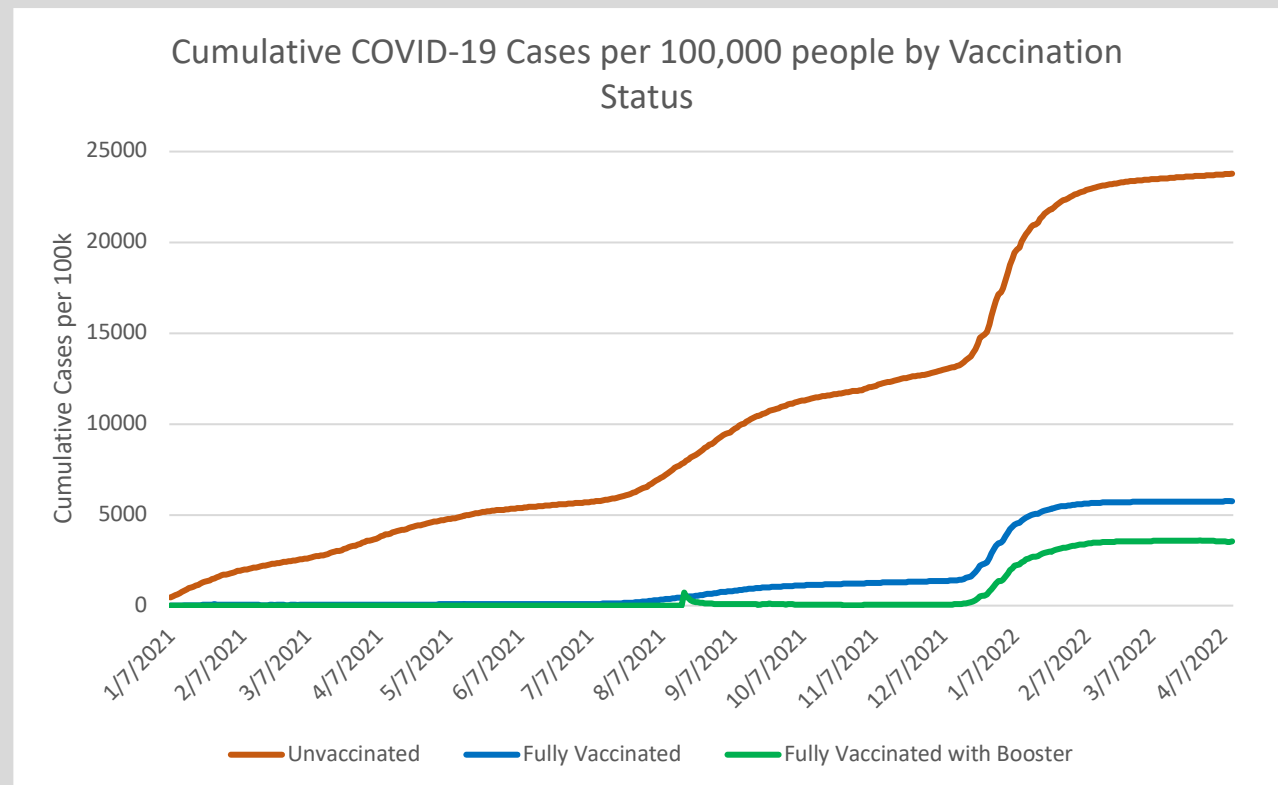
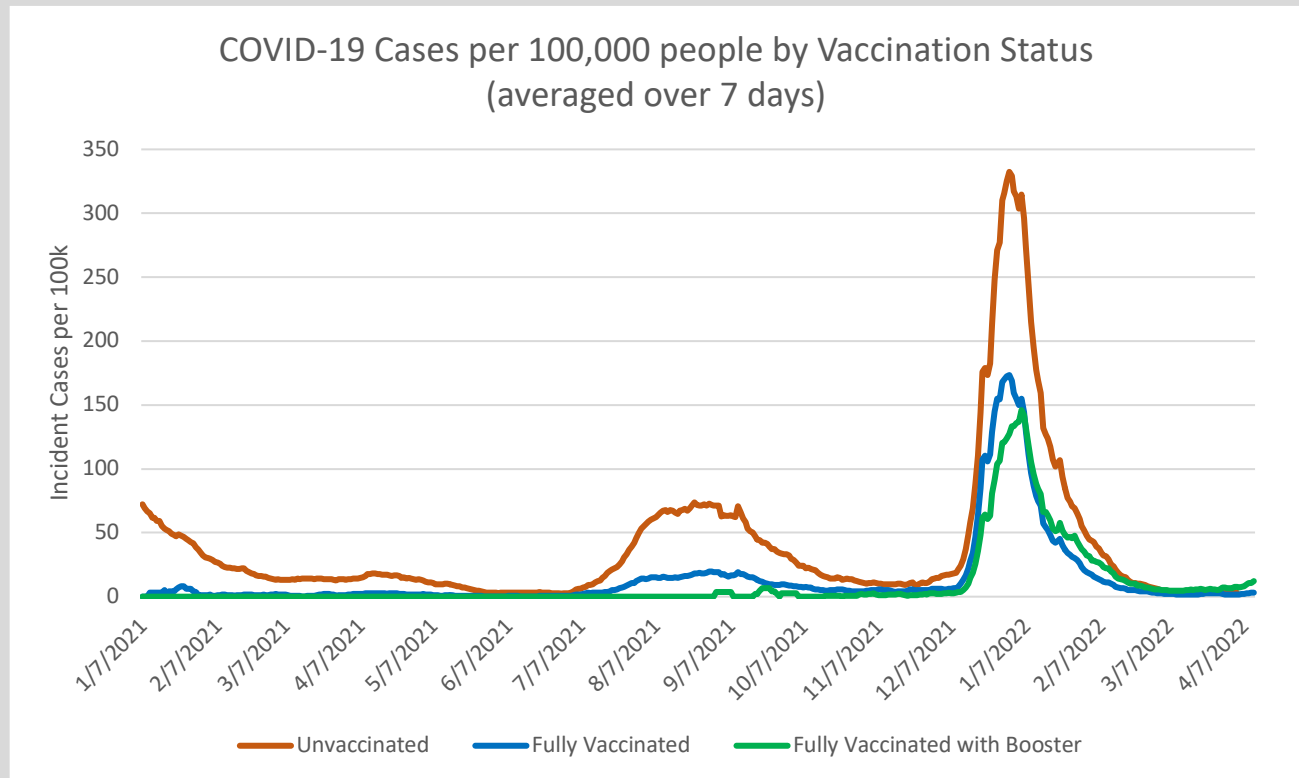


## Residents with at least one dose by race



\*Counts shown reflect the number of residents with at least one dose of a COVID-19 vaccine as of 4/15/22. These graphs do not include: 626 individuals (0.1%) with unknown gender, 16,986 individuals (3.5%) with unknown race, and 41,042 individuals (8.5%) with unknown ethnicity. Vaccinations are currently only available to children under 5 who are participating in clinical trials. \*\*All data reported are preliminary and subject to change. Delays in data reporting may cause changes in data counts.

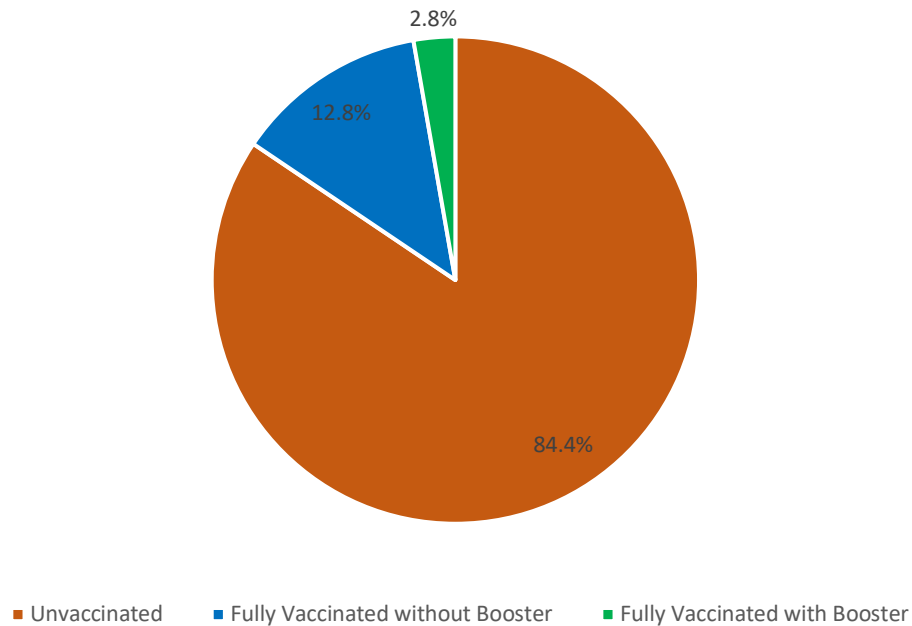
## Cases by Vaccination Status



\*Note: An individual is considered fully vaccinated if it has been at least 14 days (2 weeks) since the completion of the COVID-19 vaccination series (two doses in a two-dose series OR one dose in a one-dose series). Vaccination data obtained from the Georgia Department of Public Health's COVID-19 vaccination dashboard, last updated on 4/15/2022.

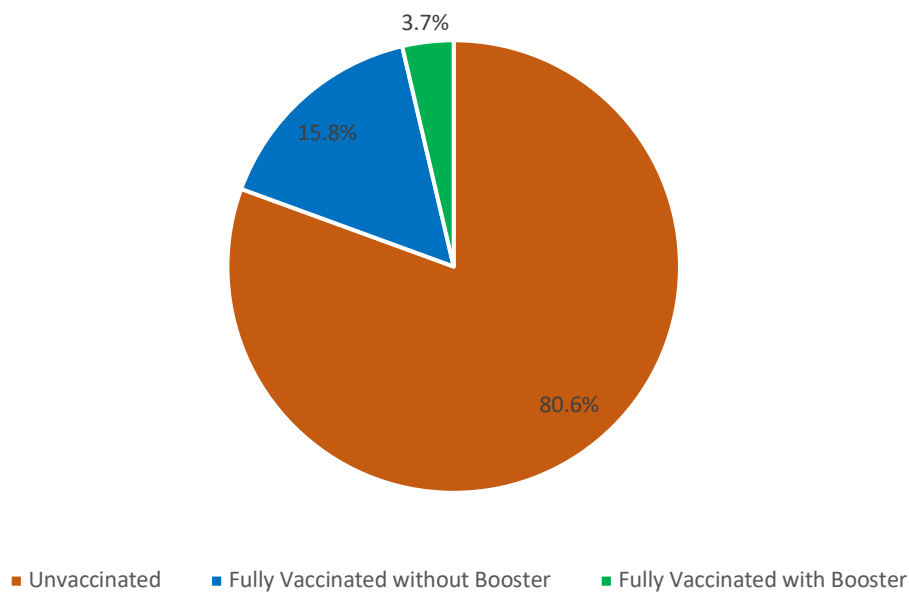
## Case Outcomes by Vaccination Status

Confirmed Cases Hospitalized for Any Reason by Vaccination Status



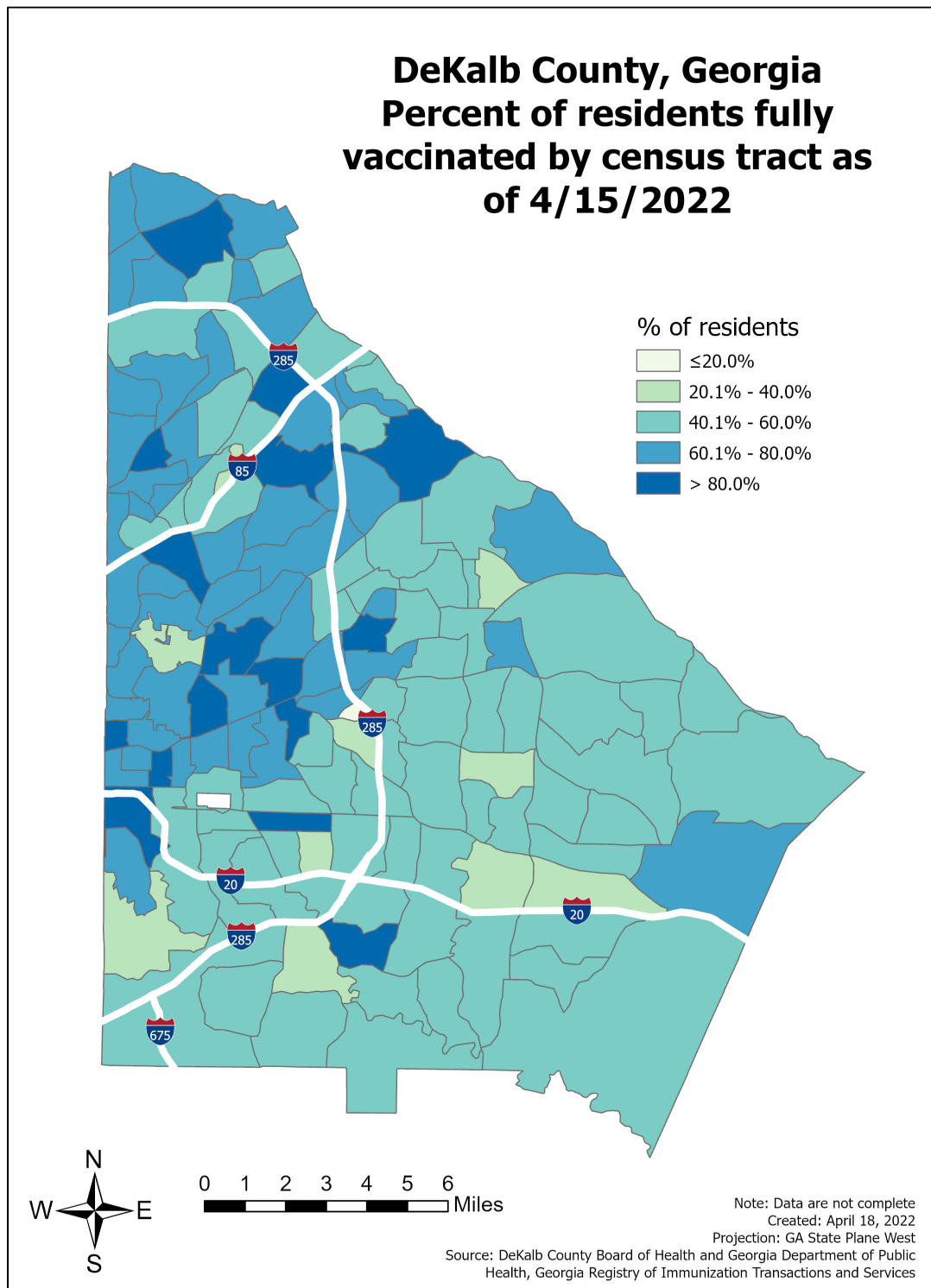
In accordance with DPH, data is displayed as confirmed cases hospitalized “for any reason” and tested positive for COVID-19. Hospitalizations are not necessarily due to the COVID-19 infection.

Confirmed COVID-19 Deaths by Vaccination Status

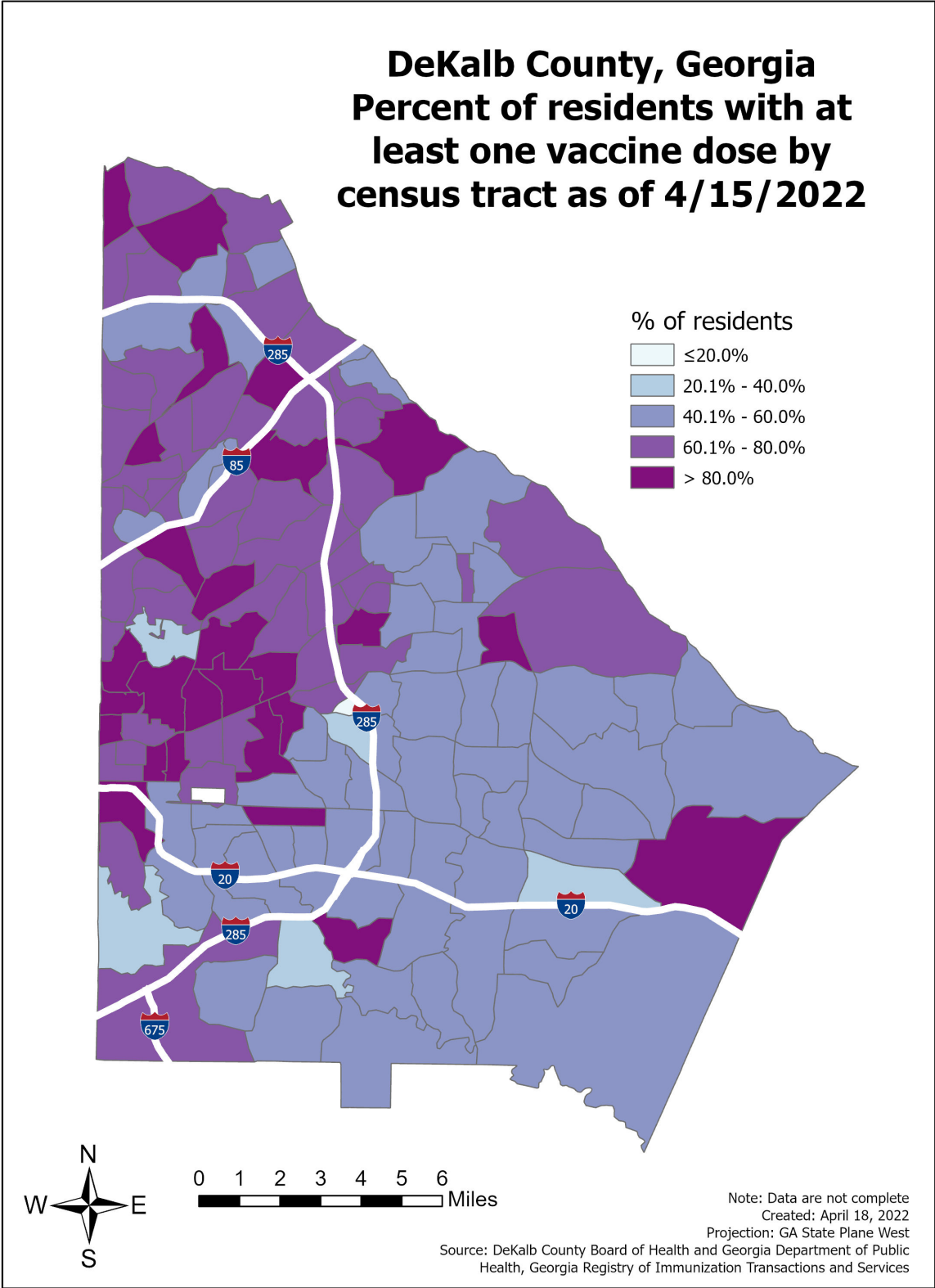


Note: Data reflects cases with an onset between 1/15/2021 and 4/11/2022

## Map by Fully Vaccinated



\*Note: An individual is considered fully vaccinated if it has been at least 14 days (2 weeks) since the completion of the COVID-19 vaccination series (two doses in a two-dose series OR one dose in a one-dose series). Data obtained from the Georgia Department of Public Health's COVID-19 vaccination dashboard, last updated on 4/15/2022



\*Note: Data obtained from the Georgia Department of Public Health’s COVID-19 vaccination dashboard, last updated on 4/15/2022